

55, Leighton Park, Bicton Heath, Shrewsbury, SY3 5FS
£210,000

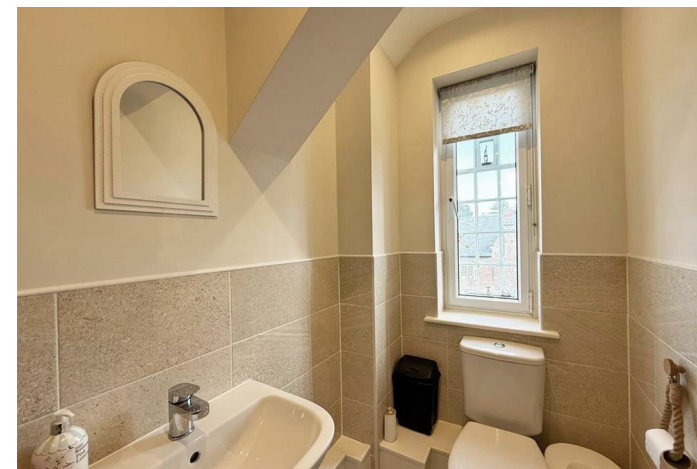


55, Leighton Park, Bicton Heath, Shrewsbury, SY3 5FS

£210,000

Occupying an elevated position within the stunning Central Hall, this beautifully presented apartment offers very well-proportioned and thoughtfully designed accommodation, with a lovely outlook over landscaped communal gardens and parkland, and benefitting from two private parking spaces.

Description



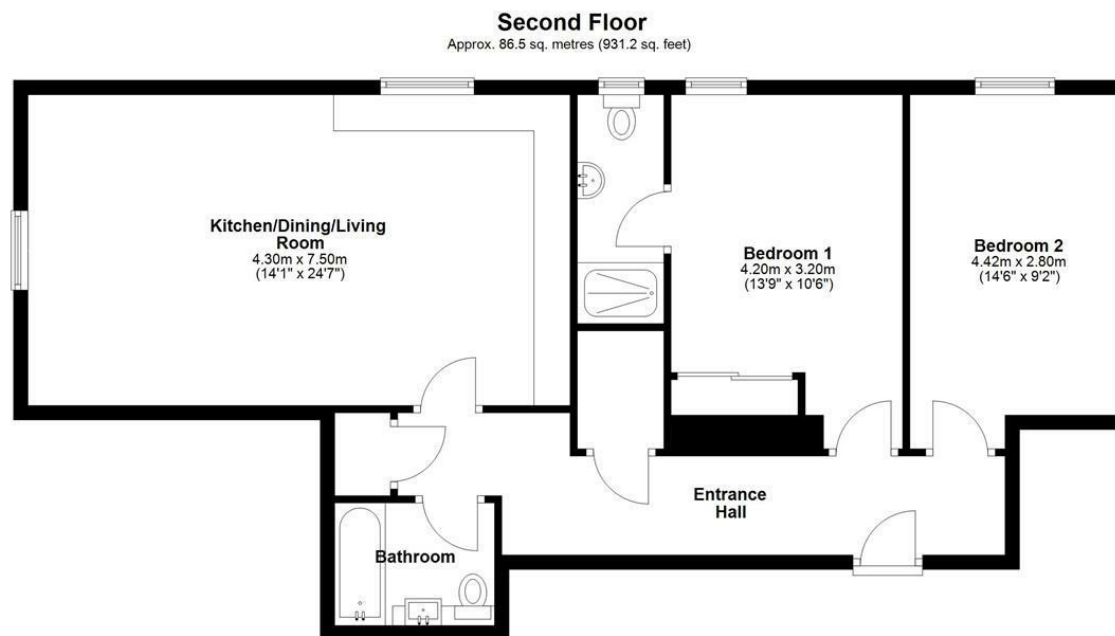
null

Council Tax Band: B

Available:

EPC: C

Floor Plans



Total area: approx. 86.5 sq. metres (931.2 sq. feet)

These particulars, whilst believed to be accurate are set out as a general outline only for guidance and do not constitute any part of an offer or contract. Intending purchasers should not rely on them as statements of representation of fact, but must satisfy themselves by inspection or otherwise as to their accuracy. No person in this firm's employment has the authority to make or give any representation or warranty in respect of the property.