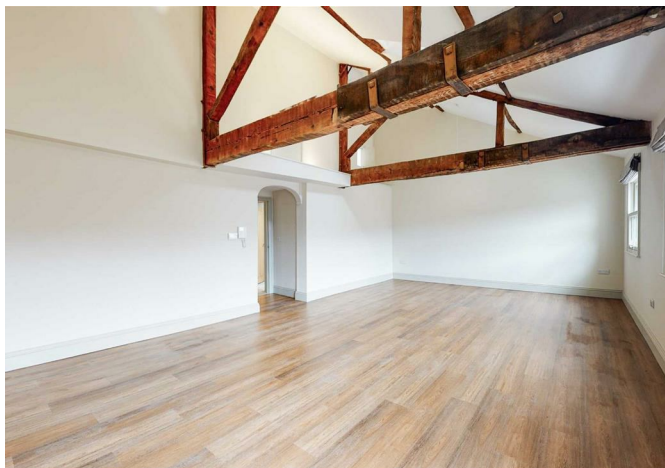


Apartment 3, Gullet Passage, 6, The Square, Shrewsbury, SY1 1LA
£1,200 Per Month



Apartment 3, Gullet Passage, 6, The Square, Shrewsbury, SY1 1LA

£1,200 Per Month

VIRTUAL TOUR AVAILABLE - 6 The Square is a very high quality residential development of one of Shrewsbury's most attractive late 18th Century Grade II Listed buildings. Overlooking the historic market square is a spacious two apartment that benefits from an allocated parking space close by.

Available: Immediately

Description

Comprising: Secure communal entrance including video intercom system, secure bike store, communal stair case to apartment entrance. Private entrance to apartment, staircase to hallway, very spacious living area with vaulted ceiling and impressive views of Shrewsbury's historic market square, fully fitted luxury kitchen with access to utility cupboard, two generous double bedrooms, luxury 'walk in' shower room including airing cupboard. Full double glazing, window blinds included, state of the art underfloor heating system throughout, fibre broadband included in the rent and provided via 'access points' strategically located to give even coverage, communal sky dish. Parking available close by. EPC C.



Unfurnished

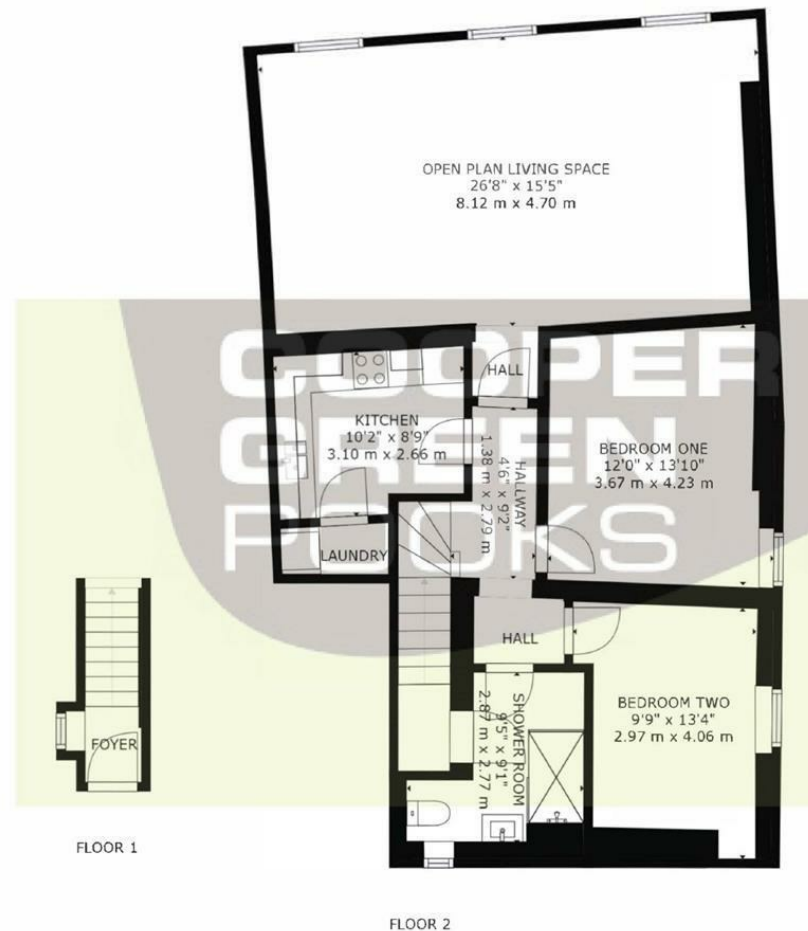
Council Tax Band: B

Available: 14th February 2025

EPC: C



Floor Plans



GROSS INTERNAL AREA
 FLOOR 1: 33 sq. ft, 3 m², FLOOR 2: 1059 sq. ft, 98 m²
 TOTAL: 1092 sq. ft, 101 m²

SIZES AND DIMENSIONS ARE APPROXIMATE, ACTUAL MAY VARY.



These particulars, whilst believed to be accurate are set out as a general outline only for guidance and do not constitute any part of an offer or contract. Intending purchasers should not rely on them as statements of representation of fact, but must satisfy themselves by inspection or otherwise as to their accuracy. No person in this firm's employment has the authority to make or give any representation or warranty in respect of the property.