



**67 Copthorne Road, Copthorne, Shrewsbury, SY3 8NW**

4 bedroom terraced house—£375,000 Freehold



# 67 Copthorne Road, Copthorne, Shrewsbury, SY3 8NW

Coopergreenpooks.co.uk

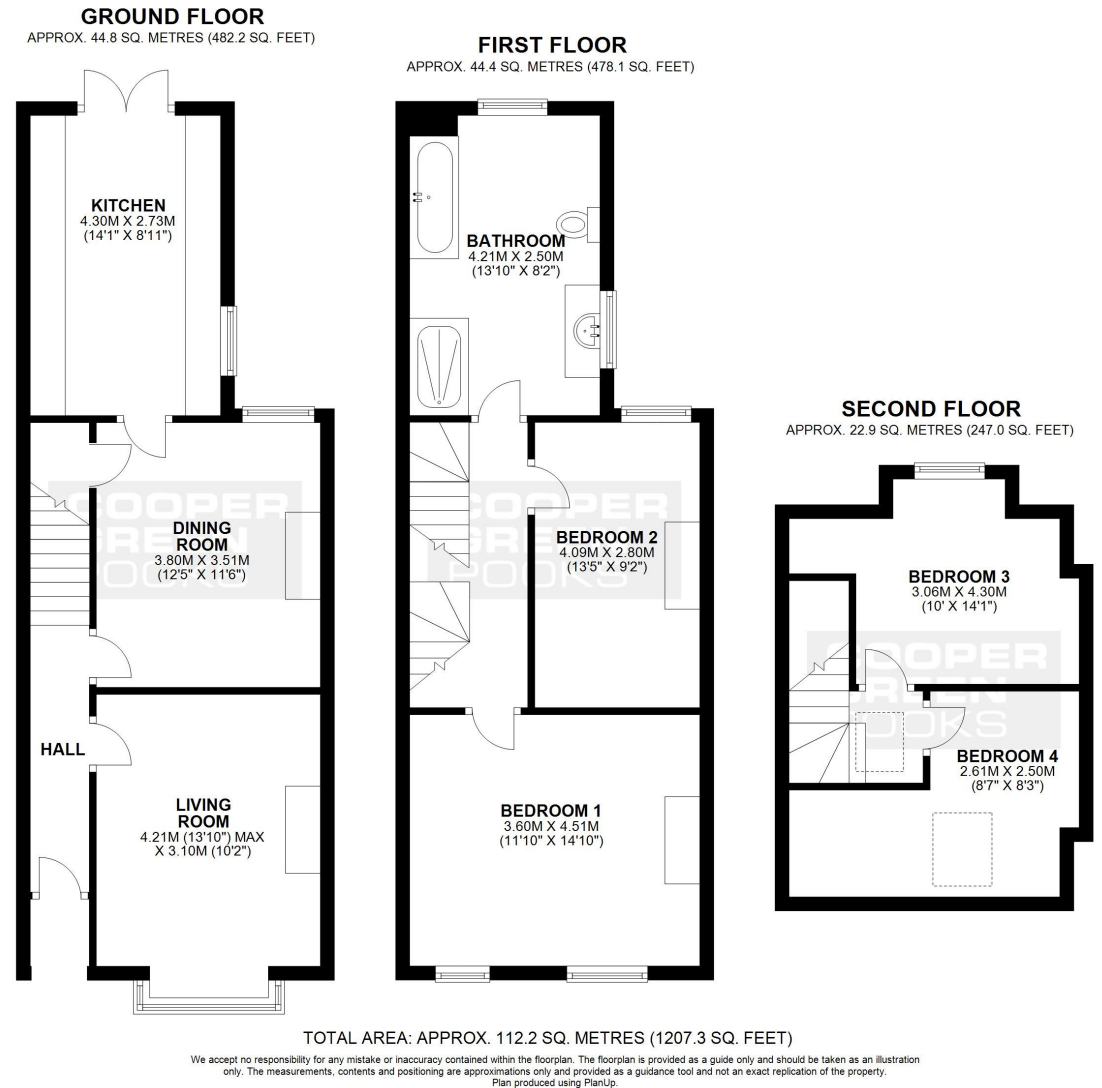
£375,000 Freehold—4 bedroom terraced house

sales@cgpooks.co.uk

Located within a sought-after residential area, just a short walk from the quarry park and town centre, this beautifully presented terraced house of character offers well-proportioned and versatile accommodation over three floors, while benefitting from a landscaped south facing garden and versatile home office/summer house.

## KEY FEATURES

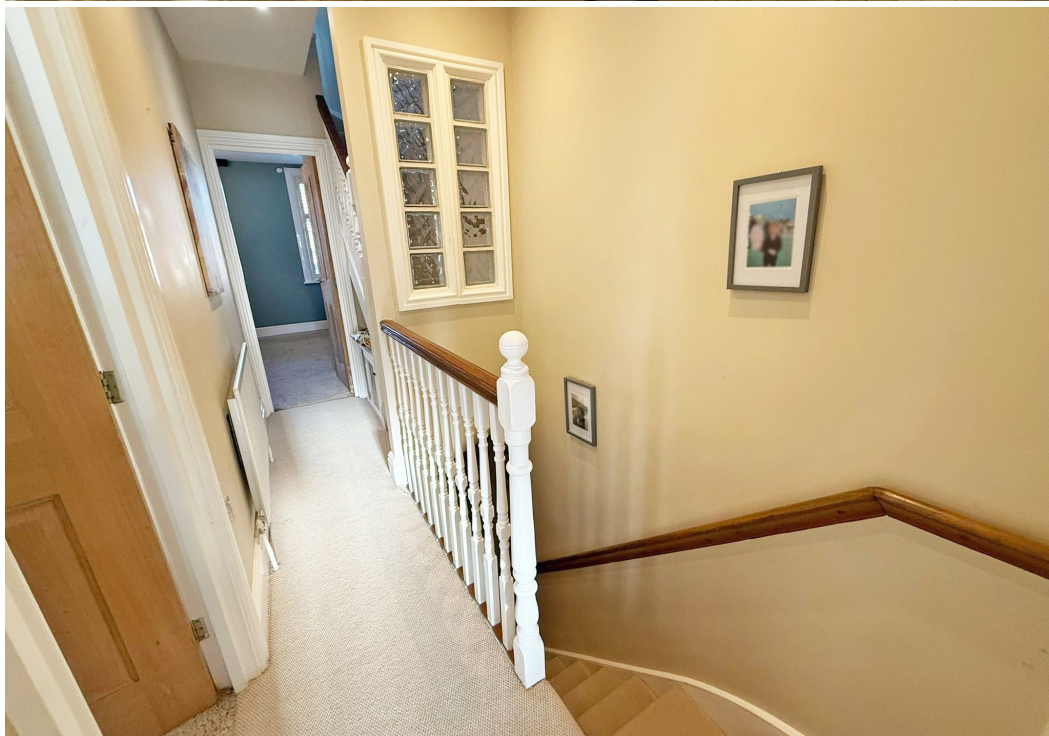
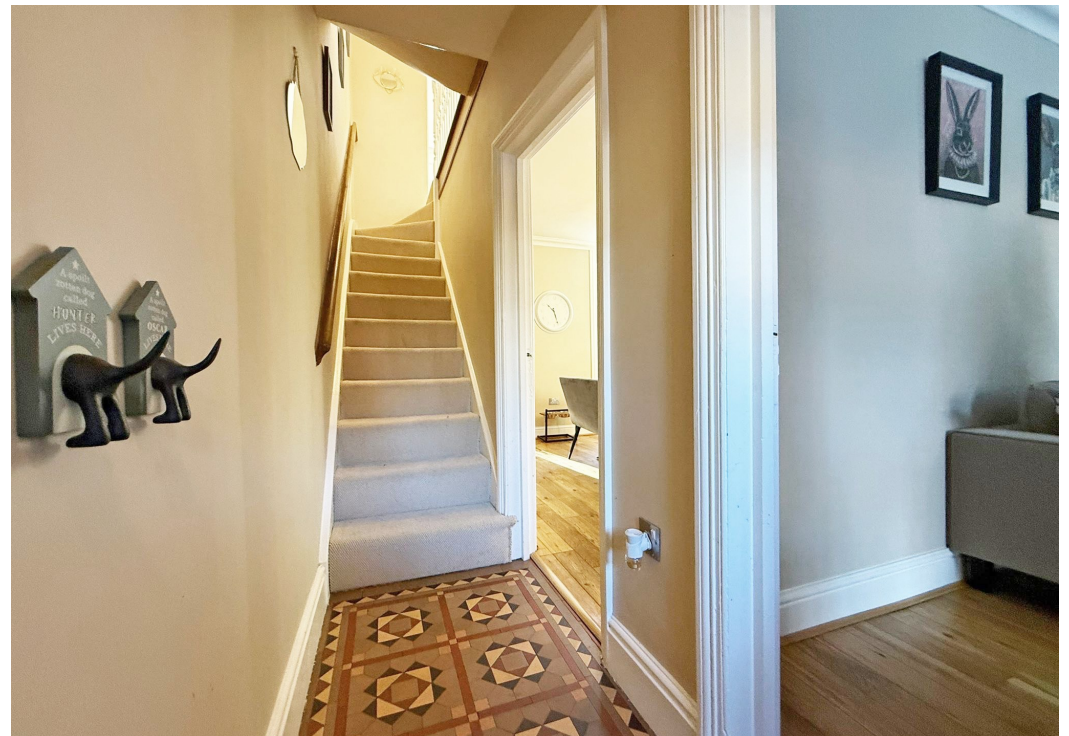
- Covered entrance opening to a good-sized hallway with a staircase to landing
- Separate living and dining rooms, both having oak boarded flooring and feature fireplaces. The living room also has a wood burning stove and bay window
- Lovely fitted kitchen with integrated appliances, window to side and glazed doors onto the rear garden
- At first floor level there are two double bedrooms and an impressive family bathroom with shower
- On the second floor are a further two bedrooms with Velux windows and useful eaves storage
- Gas fired central heating and double-glazed windows throughout
- Plenty of original features such as Jackfield tiled flooring, stripped pine doors and cast-iron fireplaces
- Attractively landscaped south facing rear garden with paved seating areas. There is also a large (about 4.0m x 3.5m) clad cabin, which has power and lighting, is insulated and has glazed double doors - this would make an ideal home office
- The property is a short walk from the various amenities of Frankwell, the excellent Woodfield School, Boathouse pub, Quarry park and town centre





















## 67 Copthorne Road, Copthorne, Shrewsbury, SY3 8NW

£375,000 Freehold—4 bedroom terraced house

[sales@cgpooks.co.uk](mailto:sales@cgpooks.co.uk)



Tenure	<b>Freehold</b>
Local Authority	<b>Shropshire Council</b>
Council Tax	<b>Band B</b>
EPC Band	<b>Band D</b>
Services	<b>All mains services are connected</b>

**Expert mortgage advice available**  
3 Barker St, Shrewsbury SY1 1QF  
**Cooper Green Pooks**  
**01743 276666**

Your home may be repossessed if you do not keep up repayments on your mortgage.  
There may be a fee for mortgage advice. The actual amount you pay will depend upon your circumstances. The fee is up to 1% but a typical fee is 0.3% of the amount borrowed.



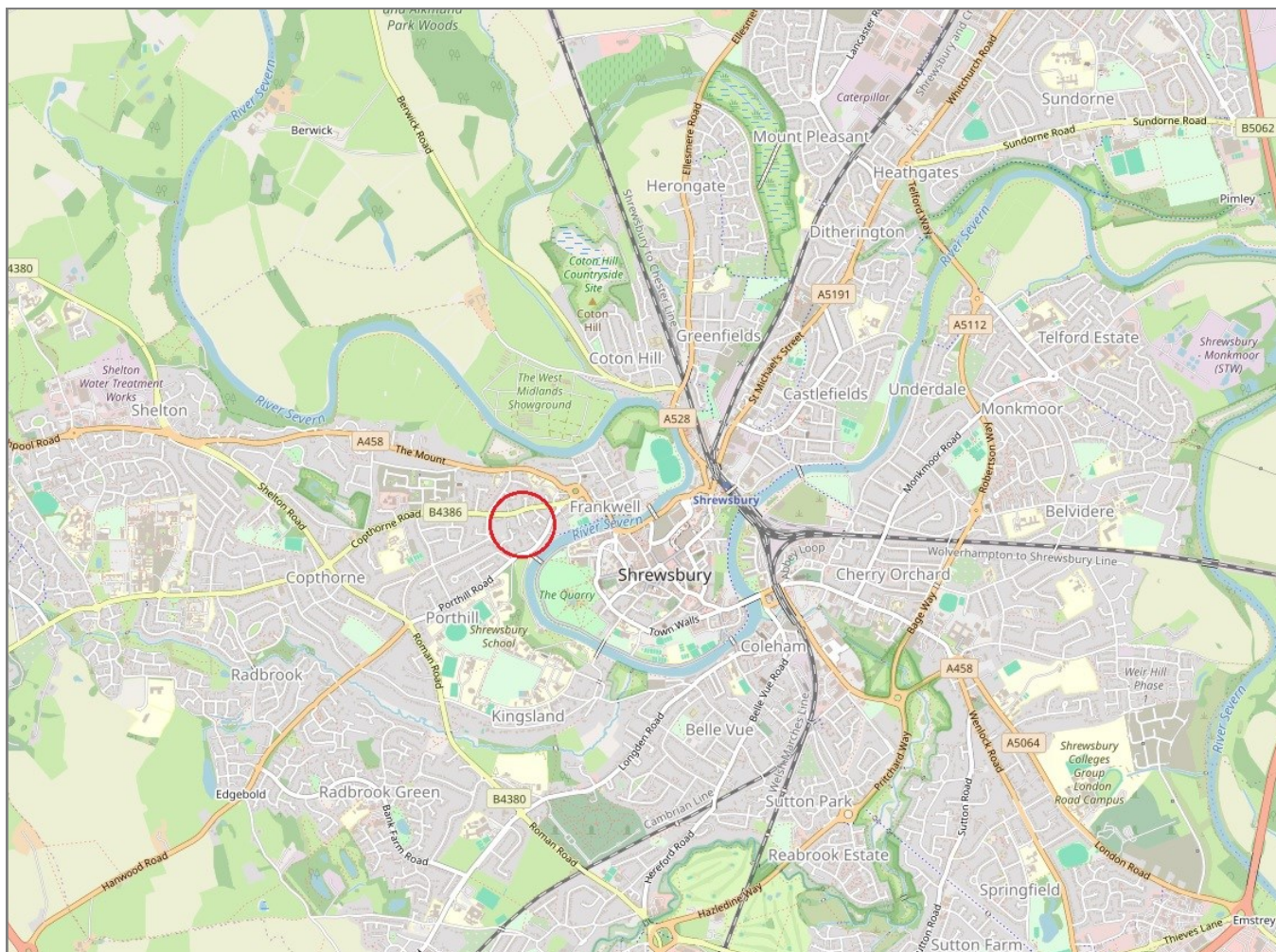


## 67 Copthorne Road, Copthorne, Shrewsbury, SY3 8NW

Coopergreenpooks.co.uk

£375,000 Freehold—4 bedroom terraced house

sales@cgpooks.co.uk



**IMPORTANT NOTICE:** Cooper Green Pooks for themselves and for the lessors or vendors of this property whose agents they are give notice that: 1 No appliances, services or service installations have been tested and no warranty as to suitability or serviceability is implied. Any prospective purchaser or lessee is advised to obtain verification from their surveyor or solicitor. 2. The particulars are set out as a general outline only for the guidance of the intended purchasers or lessees and do not constitute, nor constitute part of, an offer or contract. 3. All descriptions, reference to condition and necessary permissions for use and occupation and other details are given in good faith and are believed to be correct but any intending purchasers or lessees should not rely on them as statements or representation of fact but satisfy themselves by inspection or otherwise as to the correctness of each of them. 4. No person in the employment of Cooper Green Pooks has any authority to make or give any representation or warranty whatsoever in relation to this property. 5. All rentals and prices are quoted exclusive of Stamp Duty, legal and surveyors fees and any other associated purchasers or lessees costs. 6. Floor plans are indicative only and should not be relied on. 7. The plan showing the boundary of the property is indicative only and has not been checked against the legal title so should not be relied on. 8. All dimensions, floor areas and site areas are only approximate and should not be relied on. Dimensions are generally maximum room dimension.