



**26 Bainbridge Green, Harlescott, Shrewsbury SY1 3QS**

3 bedroom end terrace house—£169,950 Freehold



## 26 Bainbridge Green, Harlescott, Shrewsbury SY1 3QS

£169,950 Freehold—3 bedroom end terrace house

[sales@cgpooks.co.uk](mailto:sales@cgpooks.co.uk)

A very well maintained and extensively improved 3-bedroom family home, situated at the end of a quiet and private cul de sac with open outlook to front.

### KEY FEATURES

- Entrance hall and good-sized living room with wood effect flooring, feature wood burner and window to front.
- Re fitted kitchen/dining room with bar area and 2 built in storage cupboards.
- Utility room with window and sliding patio doors to rear garden, along with access to a large store.
- Staircase from kitchen/dining room to the first-floor landing, where there are 3 bedrooms (2 good doubles) and a family bathroom.
- uPVC double glazed windows and gas fired central heating.
- To the front of the property there is a pathway and lawned garden.
- There is access along the side to the rear garden, which is currently paved for easy maintenance with a timber store.
- Located at the end of a quiet cul de sac with open outlook and plenty of residents parking.
- Short walk from the local schools and convenience store.

Cooper Green Pooks  
3 Barker Street  
Shrewsbury  
SY1 1QF

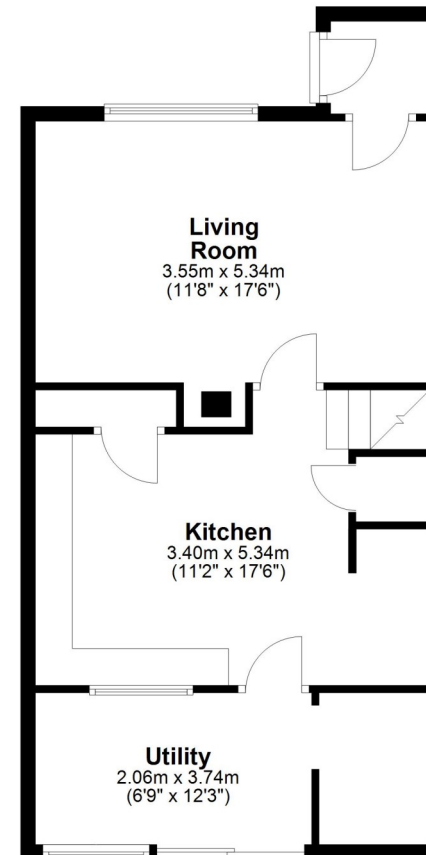
[www.cgpooks.co.uk](http://www.cgpooks.co.uk)  
[sales@cgpooks.co.uk](mailto:sales@cgpooks.co.uk)  
01743 276666



[Coopergreenpooks.co.uk](http://Coopergreenpooks.co.uk)

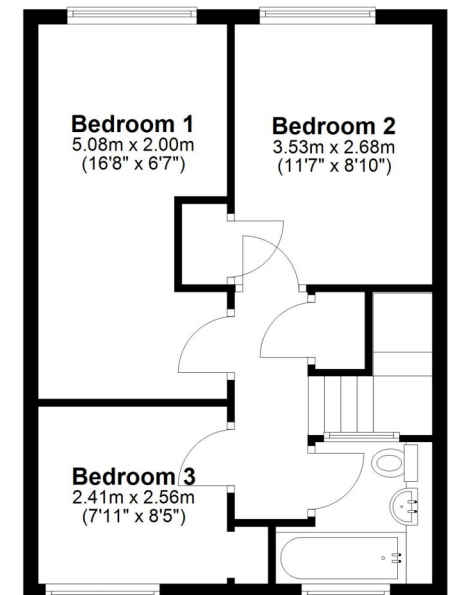
### Ground Floor

Approx. 54.2 sq. metres (583.2 sq. feet)



### First Floor

Approx. 40.6 sq. metres (437.4 sq. feet)



Total area: approx. 94.8 sq. metres (1020.5 sq. feet)











## 26 Bainbridge Green, Harlescott, Shrewsbury SY1 3QS

£169,950 Freehold—3 bedroom end terrace house

[sales@cgpooks.co.uk](mailto:sales@cgpooks.co.uk)

[Coopergreenpooks.co.uk](http://Coopergreenpooks.co.uk)



Cooper Green Pooks  
3 Barker Street  
Shrewsbury  
SY1 1QF

[www.cgpooks.co.uk](http://www.cgpooks.co.uk)  
[sales@cgpooks.co.uk](mailto:sales@cgpooks.co.uk)  
01743 276666





## 26 Bainbridge Green, Harlescott, Shrewsbury SY1 3QS

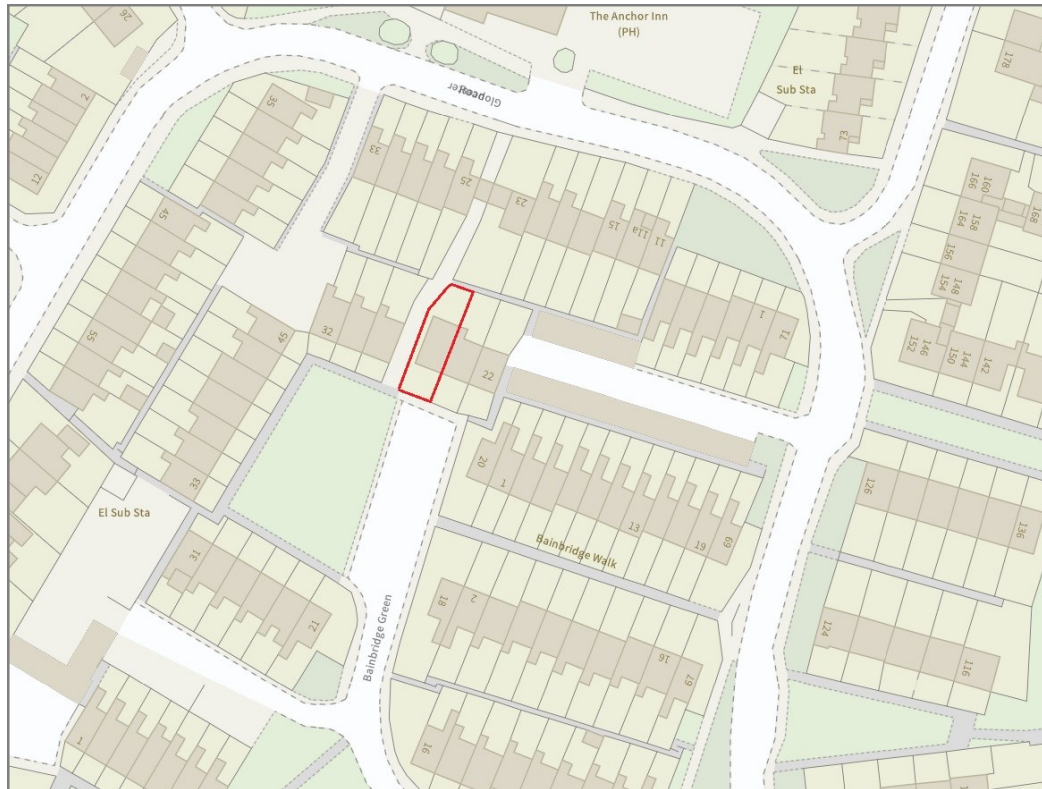
£169,950 Freehold—3 bedroom end terrace house

sales@cgpooks.co.uk

rightmove

onTheMarket.com

RICS  
Regulated by RICS



**BOUNDARIES NOT CONFIRMED**

Tenure	<b>Freehold</b>
Local Authority	<b>Shropshire Council</b>
Council Tax	<b>Band B</b>
EPC Band	<b>Band C</b>
Services	<b>All mains services are connected</b>

**Expert mortgage advice available**

3 Barker St, Shrewsbury SY1 1QF

**Cooper Green Pooks**  
**01743 276666**



Your home may be repossessed if you do not keep up repayments on your mortgage.

There may be a fee for mortgage advice. The actual amount you pay will depend upon your circumstances. The fee is up to 1% but a typical fee is 0.3% of the amount borrowed.

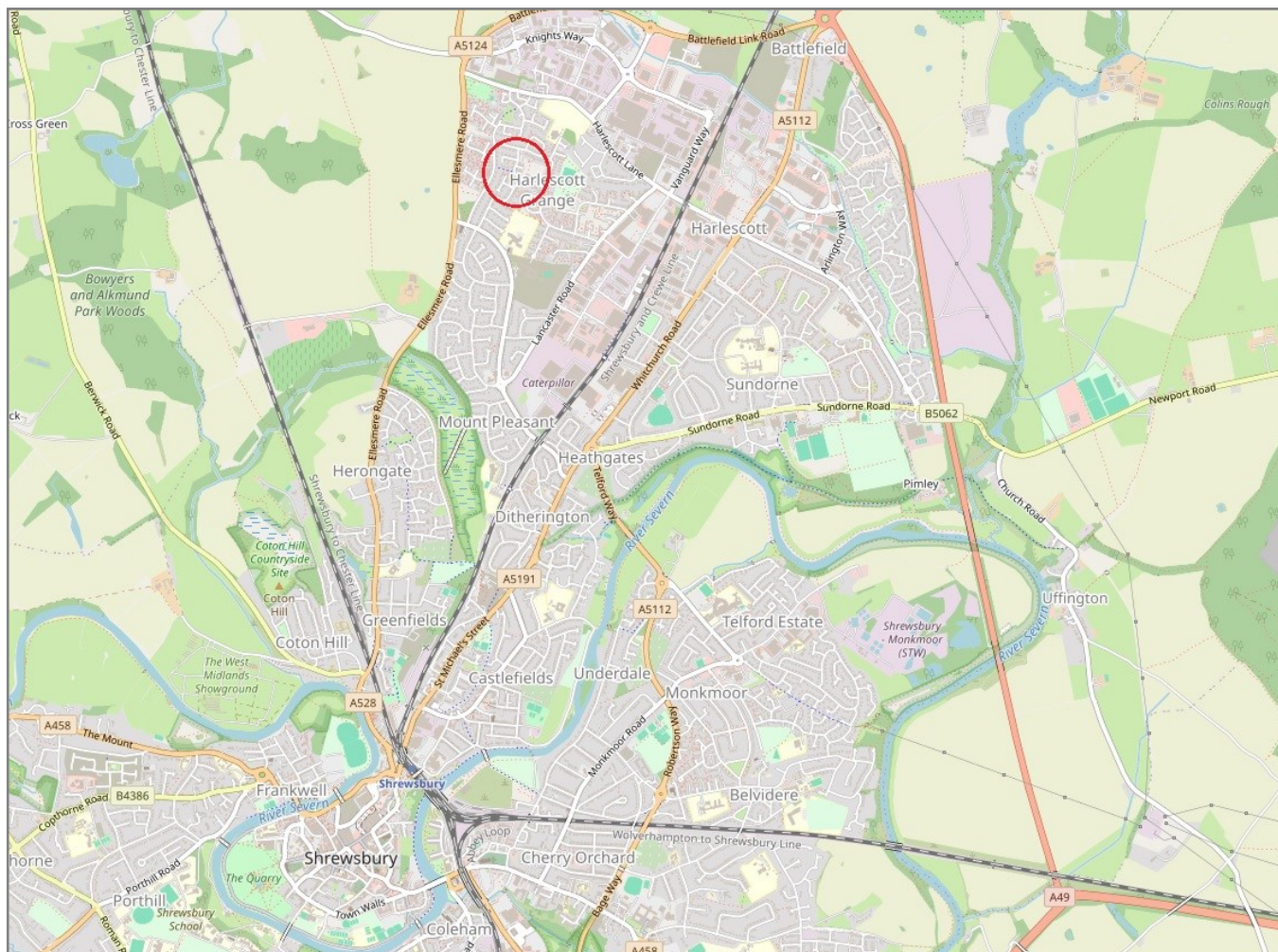


## 26 Bainbridge Green, Harlescott, Shrewsbury SY1 3QS

Coopergreenpooks.co.uk

£169,950 Freehold—3 bedroom end terrace house

sales@cgpooks.co.uk



**IMPORTANT NOTICE:** Cooper Green Pooks for themselves and for the lessors or vendors of this property whose agents they are give notice that: 1 No appliances, services or service installations have been tested and no warranty as to suitability or serviceability is implied. Any prospective purchaser or lessee is advised to obtain verification from their surveyor or solicitor. 2. The particulars are set out as a general outline only for the guidance of the intended purchasers or lessees and do not constitute, nor constitute part of, an offer or contract. 3. All descriptions, reference to condition and necessary permissions for use and occupation and other details are given in good faith and are believed to be correct but any intending purchasers or lessees should not rely on them as statements or representation of fact but satisfy themselves by inspection or otherwise as to the correctness of each of them. 4. No person in the employment of Cooper Green Pooks has any authority to make or give any representation or warranty whatsoever in relation to this property. 5. All rentals and prices are quoted exclusive of Stamp Duty, legal and surveyors fees and any other associated purchasers or lessees costs. 6. Floor plans are indicative only and should not be relied on. 7. The plan showing the boundary of the property is indicative only and has not been checked against the legal title so should not be relied on. 8. All dimensions, floor areas and site areas are only approximate and should not be relied on. Dimensions are generally maximum room dimension.