



**1 Chantry Place, Sweetlake Meadow, Shrewsbury SY3 9FP**

2 bedroom semi-detached house—£245,000 Freehold



# 1 Chantry Place, Sweetlake Meadow, Shrewsbury SY3 9FP

Coopergreenpooks.co.uk

£245,000 Freehold—2 bedroom semi-detached house

sales@cgpooks.co.uk

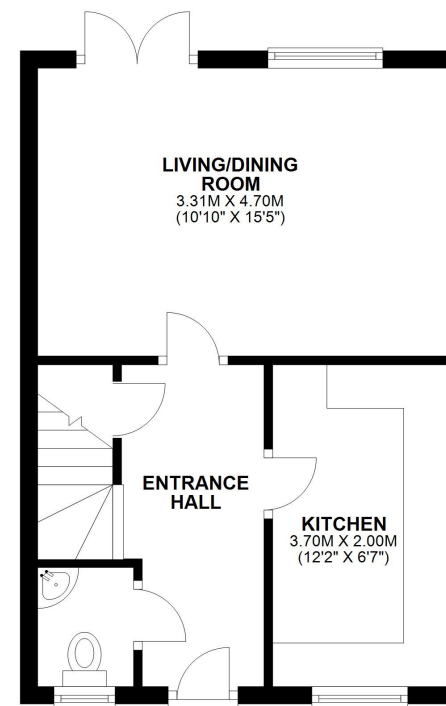
Occupying a lovely position within a popular modern development, this beautifully presented semi-detached house offers thoughtfully designed accommodation finished to a high standard throughout, while benefitting from a private rear garden and driveway parking.

## KEY FEATURES

- Good sized entrance hall with useful under stairs storage, cloakroom and turning staircase to landing
- Kitchen with a range of fitted units and space for appliances
- Open plan living/dining room with glazed double doors opening to the rear garden
- Master bedroom with built in wardrobes and two windows to front
- A further generous single bedroom and separate well-appointed family bathroom
- uPVC double glazed windows and gas fired central heating
- Private rear garden, laid to artificial lawn with paved terrace, useful timber store and gated access to side
- Driveway to front providing parking for two cars
- A superb location within a popular modern development on the fringe of the town, a stone's throw from lovely countryside walks, while being just a short distance from a choice of primary and secondary schools, and less than two miles from the town centre

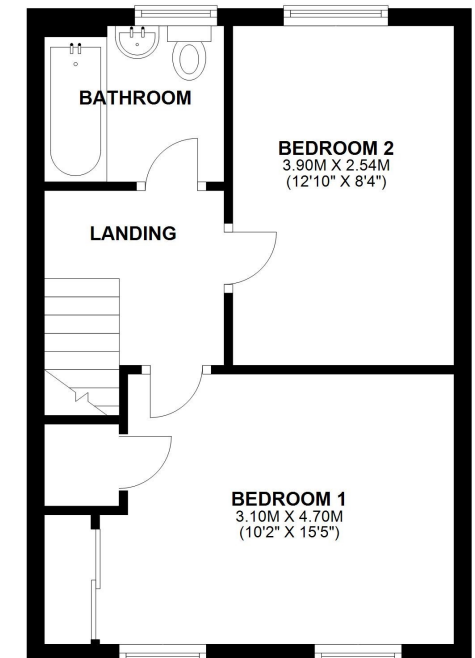
## GROUND FLOOR

APPROX. 33.4 SQ. METRES (359.3 SQ. FEET)



## FIRST FLOOR

APPROX. 33.4 SQ. METRES (359.3 SQ. FEET)



TOTAL AREA: APPROX. 66.8 SQ. METRES (718.6 SQ. FEET)

Cooper Green Pooks  
3 Barker Street  
Shrewsbury  
SY1 1QF

www.cgpooks.co.uk  
sales@cgpooks.co.uk  
01743 276666

















# 1 Chantry Place, Sweetlake Meadow, Shrewsbury SY3 9FP

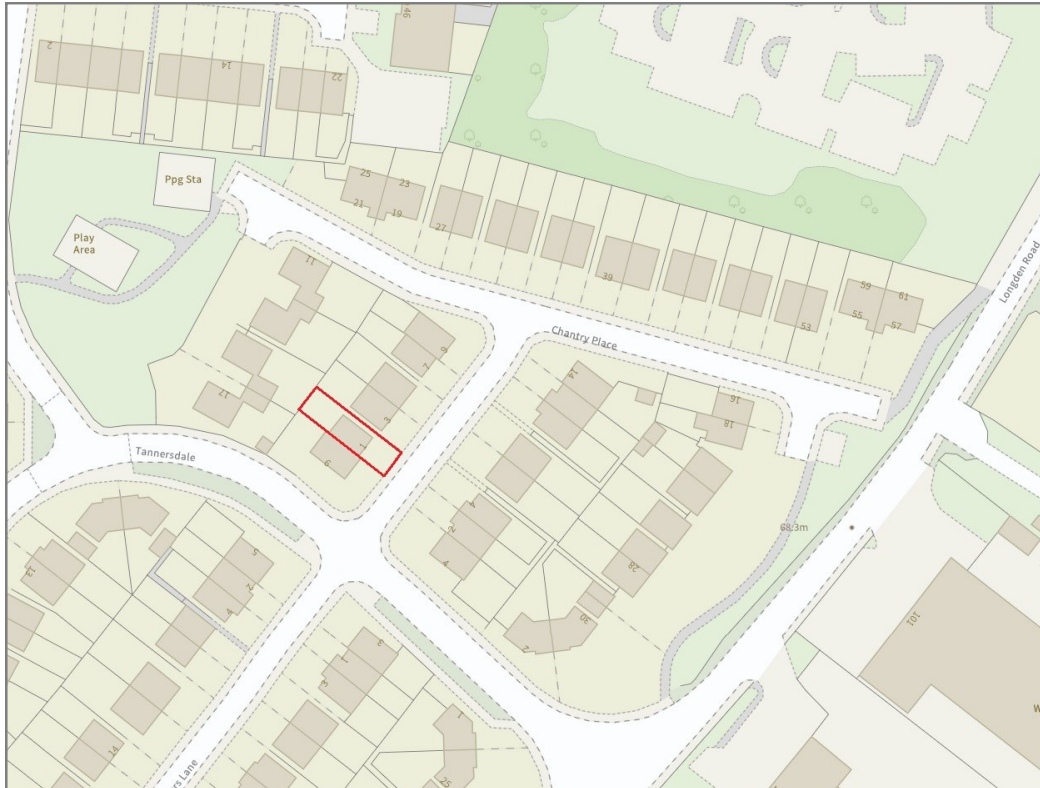
£245,000 Freehold—2 bedroom semi-detached house

sales@cgpooks.co.uk

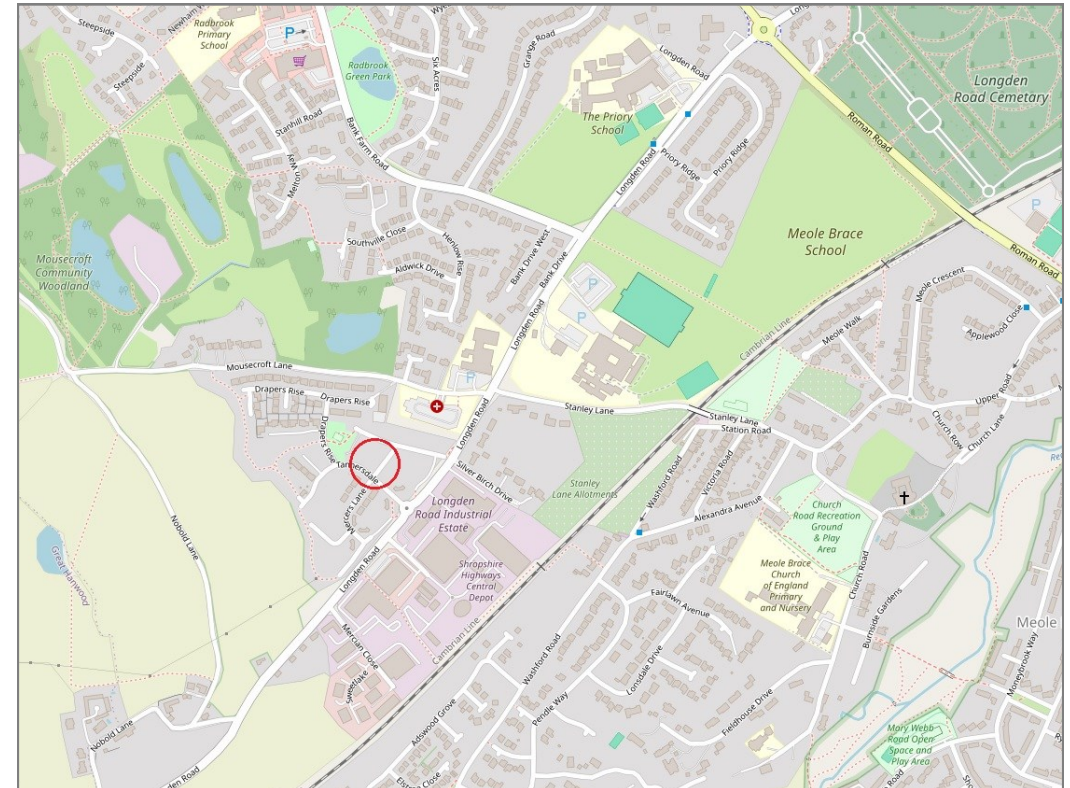
rightmove

onTheMarket.com

RICS  
Regulated by RICS



**BOUNDARIES NOT CONFIRMED**



Tenure	<b>Freehold</b>
Local Authority	<b>Shropshire Council</b>
Council Tax	<b>Band B</b>
EPC Band	<b>Band B</b>
Services	<b>All mains services are connected</b>

**Expert mortgage advice available**

3 Barker St, Shrewsbury SY1 1QF

**Cooper Green Pooks**  
**01743 276666**



Your home may be repossessed if you do not keep up repayments on your mortgage.

There may be a fee for mortgage advice. The actual amount you pay will depend upon your circumstances. The fee is up to 1% but a typical fee is 0.3% of the amount borrowed.

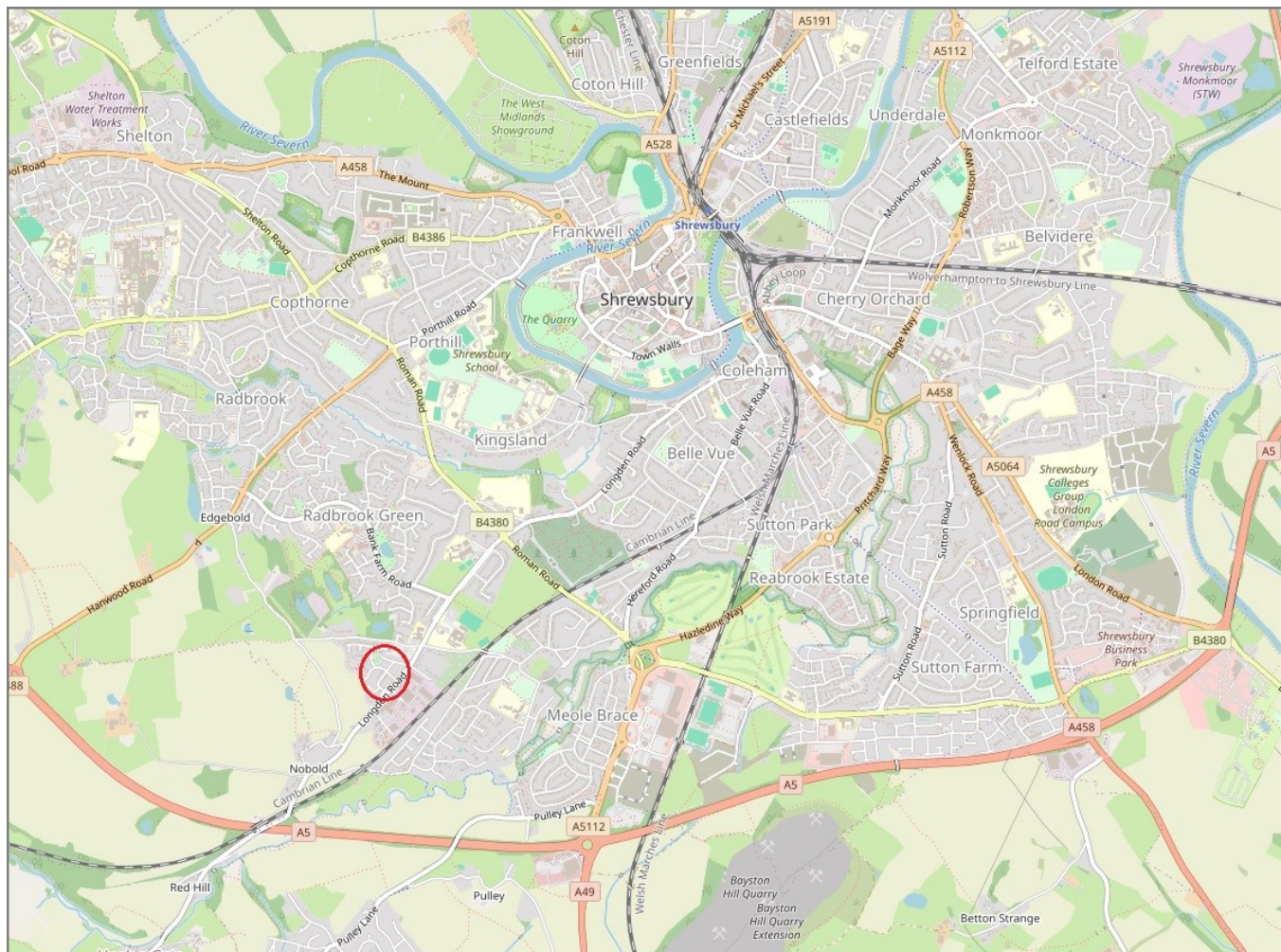


# 1 Chantry Place, Sweetlake Meadow, Shrewsbury SY3 9FP

Coopergreenpooks.co.uk

£245,000 Freehold—2 bedroom semi-detached house

sales@cgpooks.co.uk



**IMPORTANT NOTICE:** Cooper Green Pooks for themselves and for the lessors or vendors of this property whose agents they are give notice that: 1 No appliances, services or service installations have been tested and no warranty as to suitability or serviceability is implied. Any prospective purchaser or lessee is advised to obtain verification from their surveyor or solicitor. 2. The particulars are set out as a general outline only for the guidance of the intended purchasers or lessees and do not constitute, nor constitute part of, an offer or contract. 3. All descriptions, reference to condition and necessary permissions for use and occupation and other details are given in good faith and are believed to be correct but any intending purchasers or lessees should not rely on them as statements or representation of fact but satisfy themselves by inspection or otherwise as to the correctness of each of them. 4. No person in the employment of Cooper Green Pooks has any authority to make or give any representation or warranty whatsoever in relation to this property. 5. All rentals and prices are quoted exclusive of Stamp Duty, legal and surveyors fees and any other associated purchasers or lessees costs. 6. Floor plans are indicative only and should not be relied on. 7. The plan showing the boundary of the property is indicative only and has not been checked against the legal title so should not be relied on. 8. All dimensions, floor areas and site areas are only approximate and should not be relied on. Dimensions are generally maximum room dimension.