



14 Castle Road, Bayston Hill, Shrewsbury SY3 0NF

4 bedroom detached house — £375,000 Freehold

14 Castle Road, Bayston Hill, Shrewsbury SY3 0NF

Coopergreenpooks.co.uk

£375,000 Freehold—4 bedroom detached house

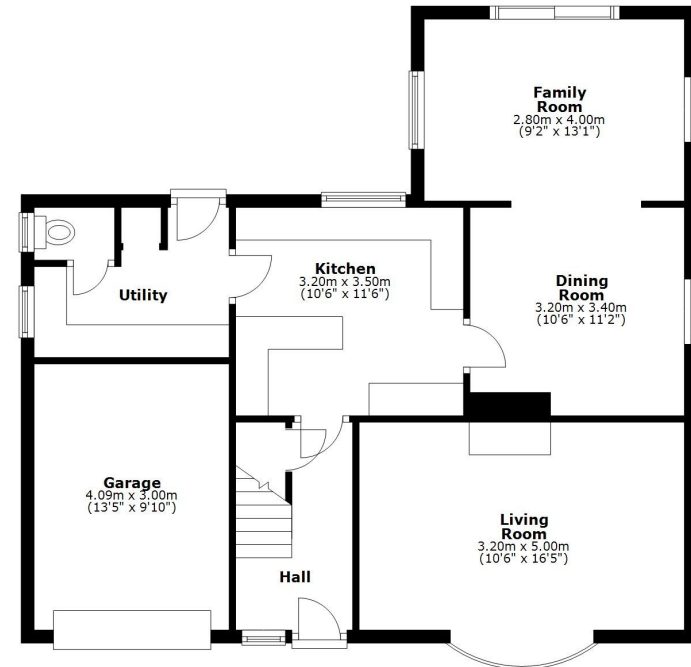
sales@cgpooks.co.uk

Occupying a lovely position within a quiet cul-de-sac, this substantial detached family house has been extended to provide well-proportioned accommodation, in need of general modernisation throughout, while benefitting from a beautiful mature garden and extensive driveway and garage.

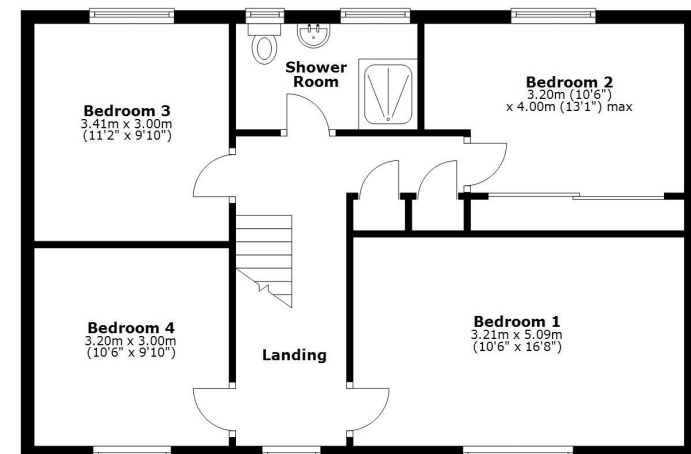
KEY FEATURES

- Good sized entrance hall with useful storage and staircase to a light and spacious landing
- Large living room with feature fireplace and bow window to front
- Kitchen with a range of fitted units, space for appliances and breakfast bar
- Practical utility providing access to both the WC and rear garden
- Separate dining room which is open plan to the extended family room with windows to two elevations and glazed doors onto the garden
- Four generous double bedrooms, all having built in wardrobes, and a family shower room on the first floor
- uPVC aluminium glazed windows and gas fired central heating via a modern combi boiler
- Attractive established rear garden, partially laid to lawn with paved terrace and planted borders, as well as a selection of mature shrubs and trees
- Driveway to front providing plenty of parking and a further second driveway to side for additional parking, previously used for a campervan
- Large integral garage with power and lighting
- A great location, set within a quiet cul-de-sac, while being just a short distance from the local primary school, Bayston Hill's excellent range of amenities, and a selection of countryside walks. Meole Brace retail park is also just a 5/10-minute drive away, and the town centre is no more than 15 minutes
- Sold with no upward chain

Ground Floor
Approx. 75.7 sq. metres (814.6 sq. feet)



First Floor
Approx. 64.7 sq. metres (696.6 sq. feet)



Total area: approx. 140.4 sq. metres (1511.2 sq. feet)











14 Castle Road, Bayston Hill, Shrewsbury SY3 0NF

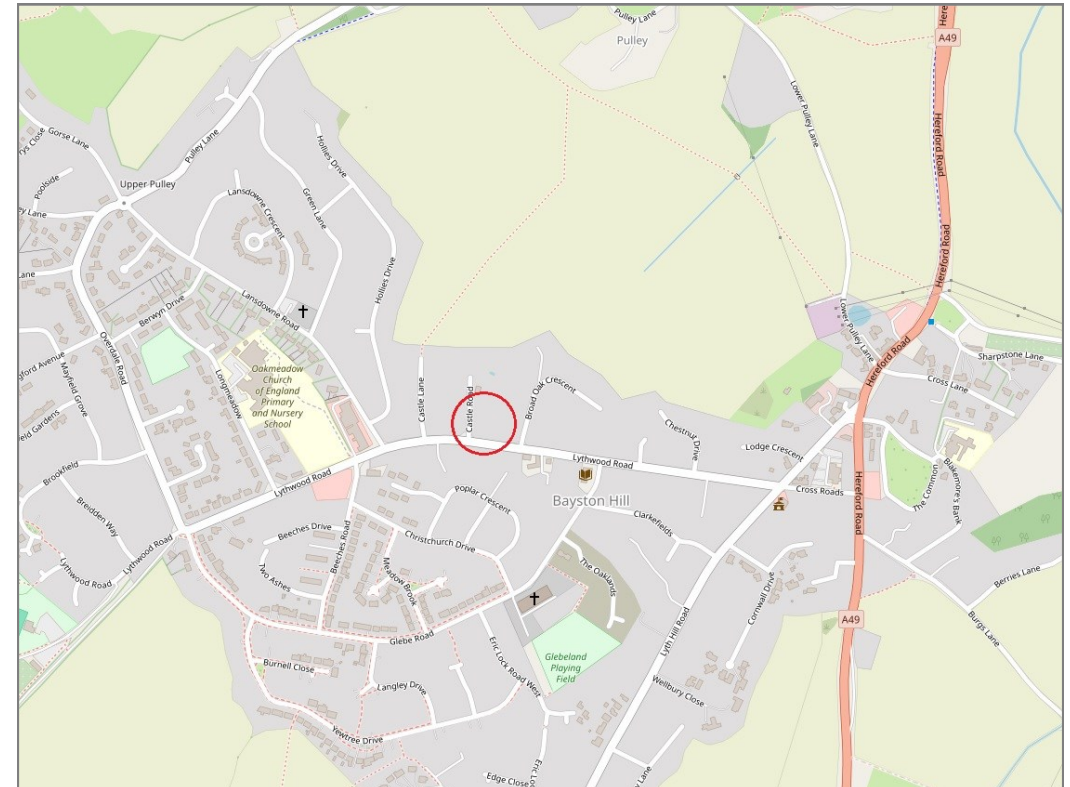
£375,000 Freehold—4 bedroom detached house

sales@cgpooks.co.uk

rightmove 

 OnTheMarket.com

 **RICS**
Regulated by RICS



BOUNDARIES NOT CONFIRMED

Tenure	Freehold
Local Authority	Shropshire Council
Council Tax	Band D
EPC Band	TBC
Services	All mains services are connected

 **Expert mortgage advice available**

3 Barker St, Shrewsbury SY1 1QF

Cooper Green Pooks
01743 276666



Your home may be repossessed if you do not keep up repayments on your mortgage.

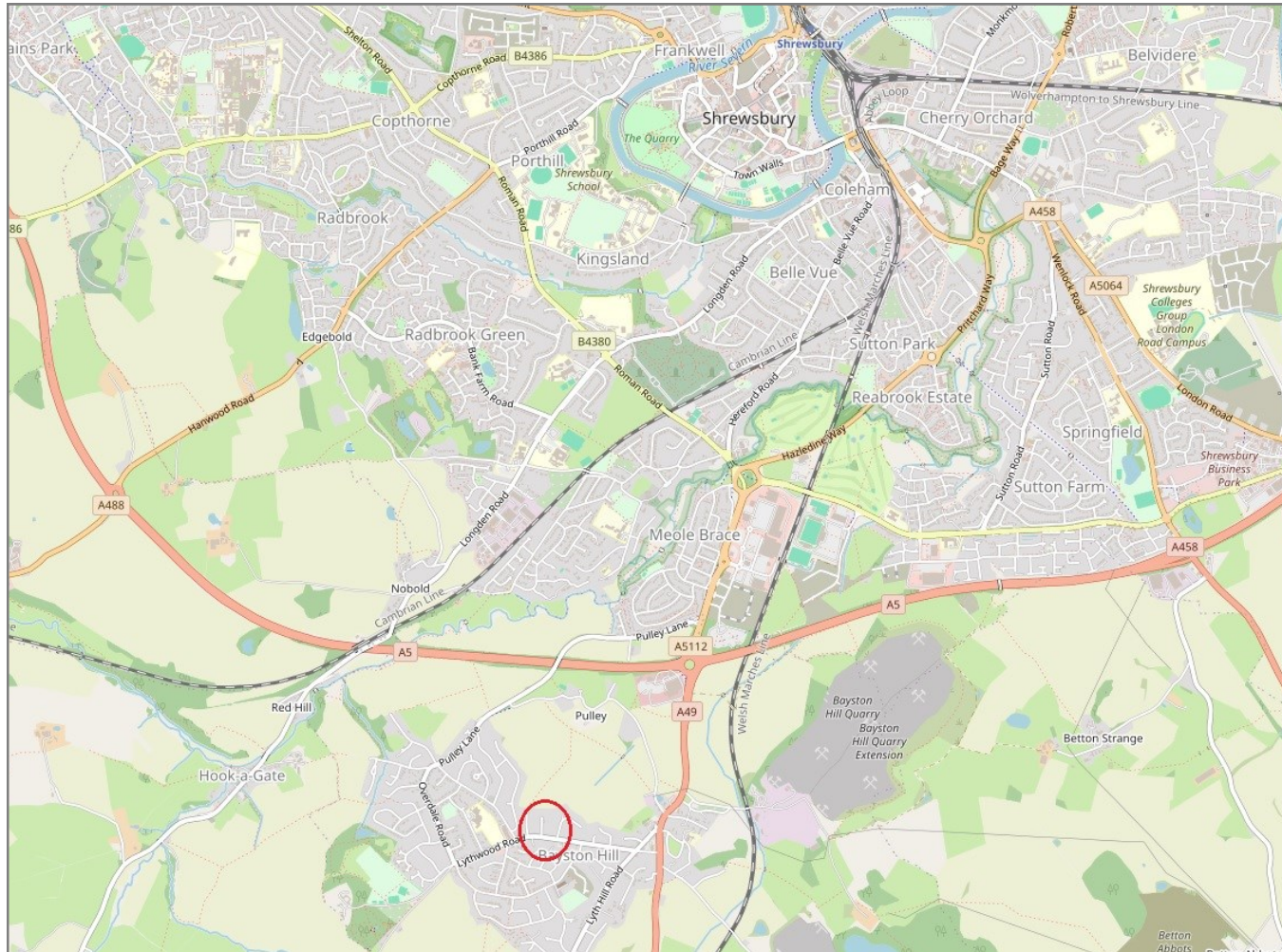
There may be a fee for mortgage advice. The actual amount you pay will depend upon your circumstances. The fee is up to 1% but a typical fee is 0.3% of the amount borrowed.

14 Castle Road, Bayston Hill, Shrewsbury SY3 0NF

Coopergreenpooks.co.uk

£375,000 Freehold—4 bedroom detached house

sales@cgpooks.co.uk



IMPORTANT NOTICE: Cooper Green Pooks for themselves and for the lessors or vendors of this property whose agents they are give notice that: 1 No appliances, services or service installations have been tested and no warranty as to suitability or serviceability is implied. Any prospective purchaser or lessee is advised to obtain verification from their surveyor or solicitor. 2. The particulars are set out as a general outline only for the guidance of the intended purchasers or lessees and do not constitute, nor constitute part of, an offer or contract. 3. All descriptions, reference to condition and necessary permissions for use and occupation and other details are given in good faith and are believed to be correct but any intending purchasers or lessees should not rely on them as statements or representation of fact but satisfy themselves by inspection or otherwise as to the correctness of each of them. 4. No person in the employment of Cooper Green Pooks has any authority to make or give any representation or warranty whatsoever in relation to this property. 5. All rentals and prices are quoted exclusive of Stamp Duty, legal and surveyors fees and any other associated purchasers or lessees costs. 6. Floor plans are indicative only and should not be relied on. 7. The plan showing the boundary of the property is indicative only and has not been checked against the legal title so should not be relied on. 8. All dimensions, floor areas and site areas are only approximate and should not be relied on. Dimensions are generally maximum room dimension.