



2 Coppice Walk, Shrewsbury SY2 5PS

3 bedroom terraced house — £175,000 Freehold

2 Coppice Walk, Shrewsbury SY2 5PS

Coopergreenpooks.co.uk

£175,000 Freehold—3 bedroom terraced house

sales@cgpooks.co.uk

Occupying a lovely quiet position with a pleasant outlook, this three-bedroom terraced house offers neatly presented accommodation, while benefitting from a private south facing rear garden.

KEY FEATURES

- Entrance hall opening to a good-sized living/dining room with feature gas fire, useful under stairs storage and windows to two elevations
- Kitchen with a range of fitted units, space for appliances and part glazed door to the rear garden
- Three bedrooms and a separate shower room on the first floor
- uPVC double glazed windows
- South facing rear garden, paved and gravelled for easy maintenance, with timber store and gated access to the rear
- Off-street parking available within a residents parking area
- A very quiet and convenient location, just a 5-minute drive from the town centre and a few minutes' walk from some excellent local amenities, as well as both primary and secondary schools
- Ideal for first time buyers or investors
- Sold vacant with no upward chain

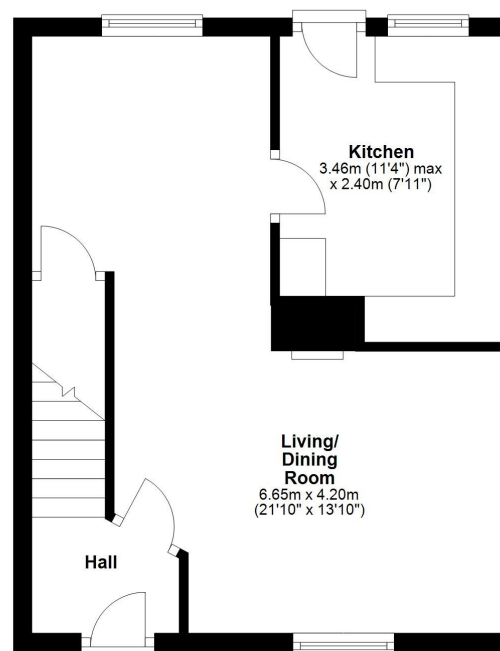
Cooper Green Pooks
3 Barker Street
Shrewsbury
SY1 1QF

www.cgpooks.co.uk
sales@cgpooks.co.uk
01743 276666



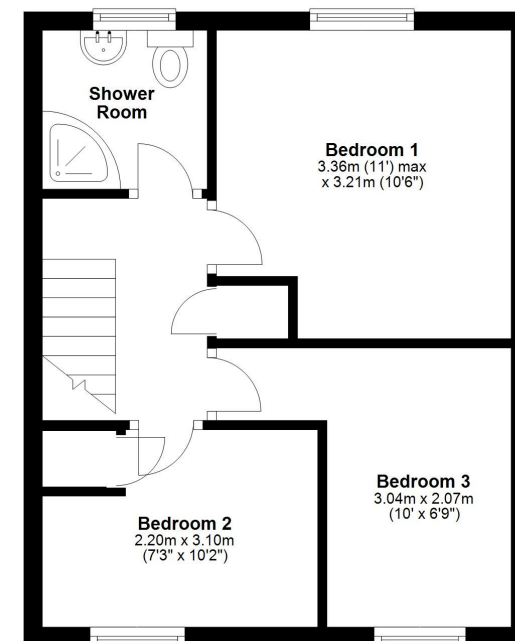
Ground Floor

Approx. 33.1 sq. metres (356.3 sq. feet)



First Floor

Approx. 32.8 sq. metres (353.6 sq. feet)



Total area: approx. 66.0 sq. metres (709.9 sq. feet)







2 Coppice Walk, Shrewsbury SY2 5PS

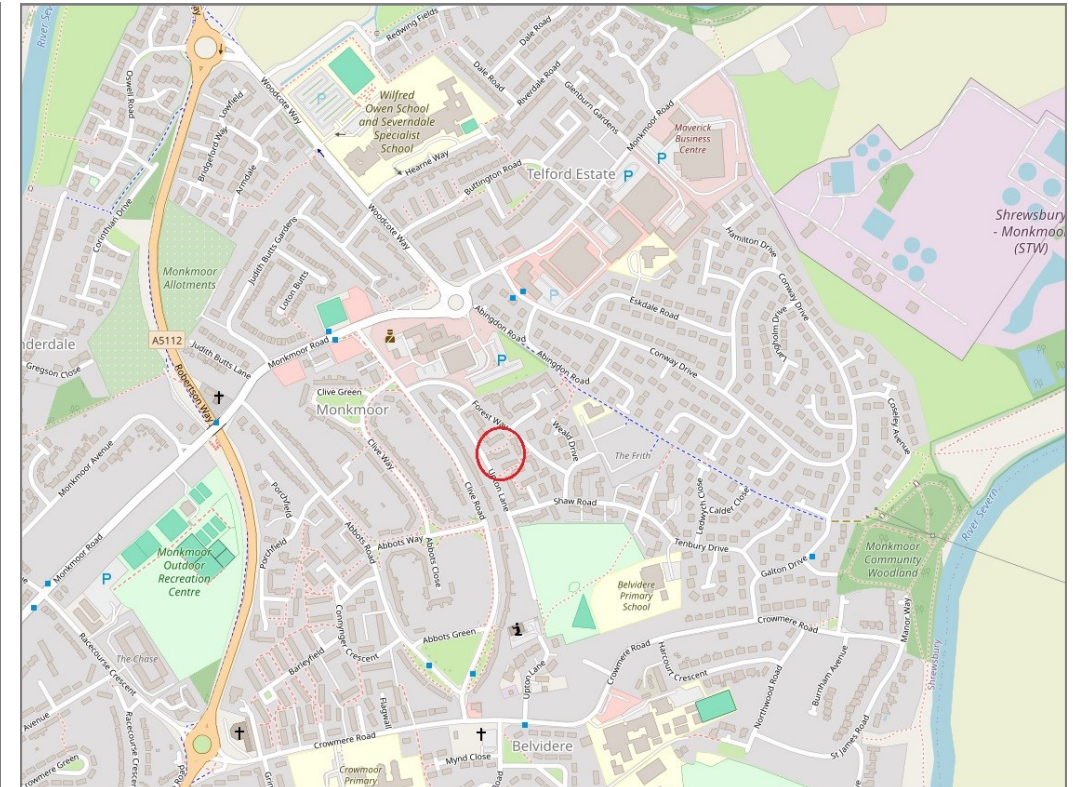
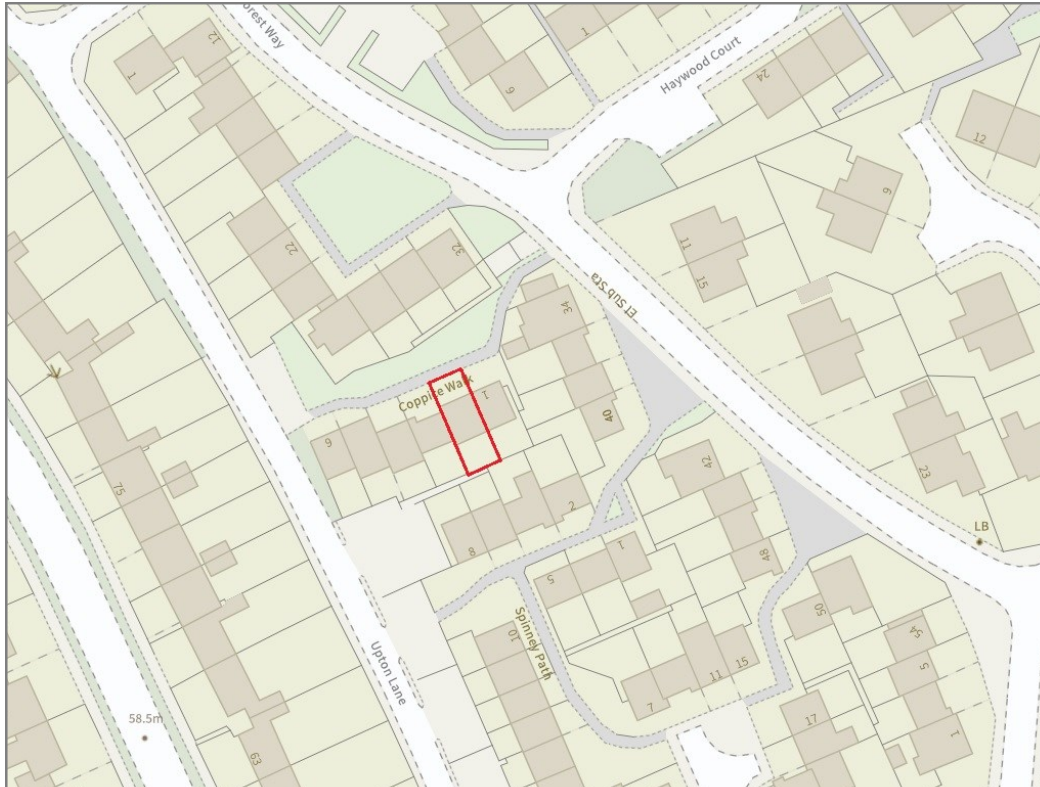
£175,000 Freehold—3 bedroom terraced house

sales@cgpooks.co.uk

rightmove 

 OnTheMarket.com

 **RICS**
Regulated by RICS



BOUNDARIES NOT CONFIRMED

Tenure	Freehold
Local Authority	Shropshire Council
Council Tax	Band B
EPC Band	TBC
Services	All mains services are connected

 **Expert mortgage advice available**

3 Barker St, Shrewsbury SY1 1QF

Cooper Green Pooks
01743 276666



Your home may be repossessed if you do not keep up repayments on your mortgage.

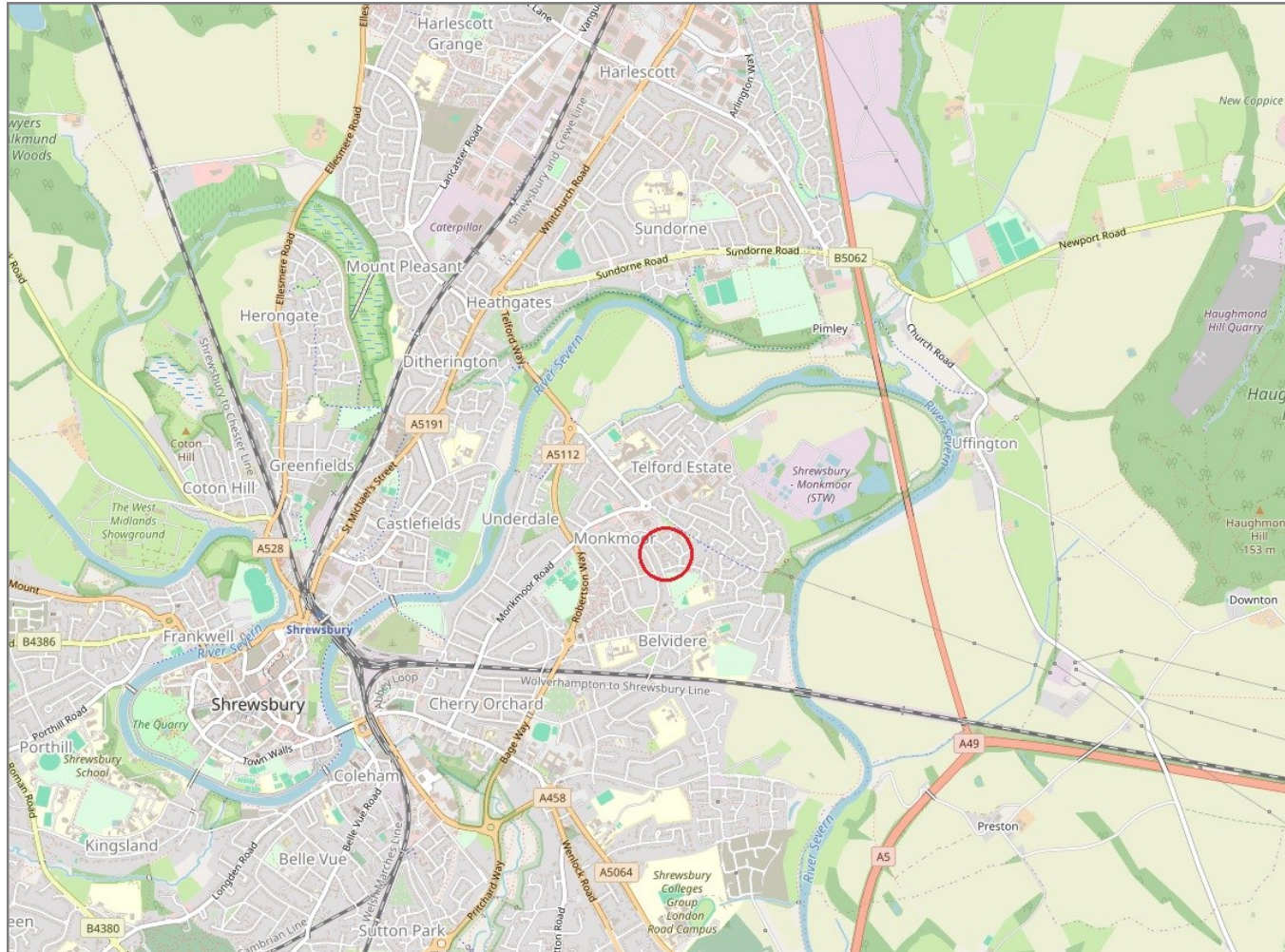
There may be a fee for mortgage advice. The actual amount you pay will depend upon your circumstances. The fee is up to 1% but a typical fee is 0.3% of the amount borrowed.

2 Coppice Walk, Shrewsbury SY2 5PS

Coopergreenpooks.co.uk

£175,000 Freehold—3 bedroom terraced house

sales@cgpooks.co.uk



IMPORTANT NOTICE: Cooper Green Pooks for themselves and for the lessors or vendors of this property whose agents they are give notice that: 1 No appliances, services or service installations have been tested and no warranty as to suitability or serviceability is implied. Any prospective purchaser or lessee is advised to obtain verification from their surveyor or solicitor. 2. The particulars are set out as a general outline only for the guidance of the intended purchasers or lessees and do not constitute, nor constitute part of, an offer or contract. 3. All descriptions, reference to condition and necessary permissions for use and occupation and other details are given in good faith and are believed to be correct but any intending purchasers or lessees should not rely on them as statements or representation of fact but satisfy themselves by inspection or otherwise as to the correctness of each of them. 4. No person in the employment of Cooper Green Pooks has any authority to make or give any representation or warranty whatsoever in relation to this property. 5. All rentals and prices are quoted exclusive of Stamp Duty, legal and surveyors fees and any other associated purchasers or lessees costs. 6. Floor plans are indicative only and should not be relied on. 7. The plan showing the boundary of the property is indicative only and has not been checked against the legal title so should not be relied on. 8. All dimensions, floor areas and site areas are only approximate and should not be relied on. Dimensions are generally maximum room dimension.