



59, Sundorne Road, Shrewsbury, SY1 4RX
£1,100 Per Month



59, Sundorne Road, Shrewsbury, SY1 4RX

£1,100 Per Month

VIRTUAL TOUR AVAILABLE - Well presented three bedroom semi-detached family house positioned off the Sundorne Road. The property has excellent road connections to both Shrewsbury Town Centre and the A5 Trunk Road.

Available: 09/12/2024

Description

Comprising: Porch, spacious entrance hallway with under stairs storage and solid oak flooring, dining room at the front of the property with gas fire and alcove storage, kitchen/breakfast room with integrated double oven and gas hob, under counter space for dishwasher, double glazed doors to patio and solid oak flooring, living room with log burner and glazed door to patio and solid oak flooring . Stairs to landing, two double bedrooms - one with freestanding wardrobe, further bedroom, bathroom with shower over bath and storage. Rear bedrooms overlooking Albert Road Cricket and Bowling Club. Single garage with up and over door, electricity and space for washing machine and dryer and side access to garden. Front and rear garden, rear garden with patio and shed. Driveway parking. Gas Central Heating. Double Glazing. EPC D



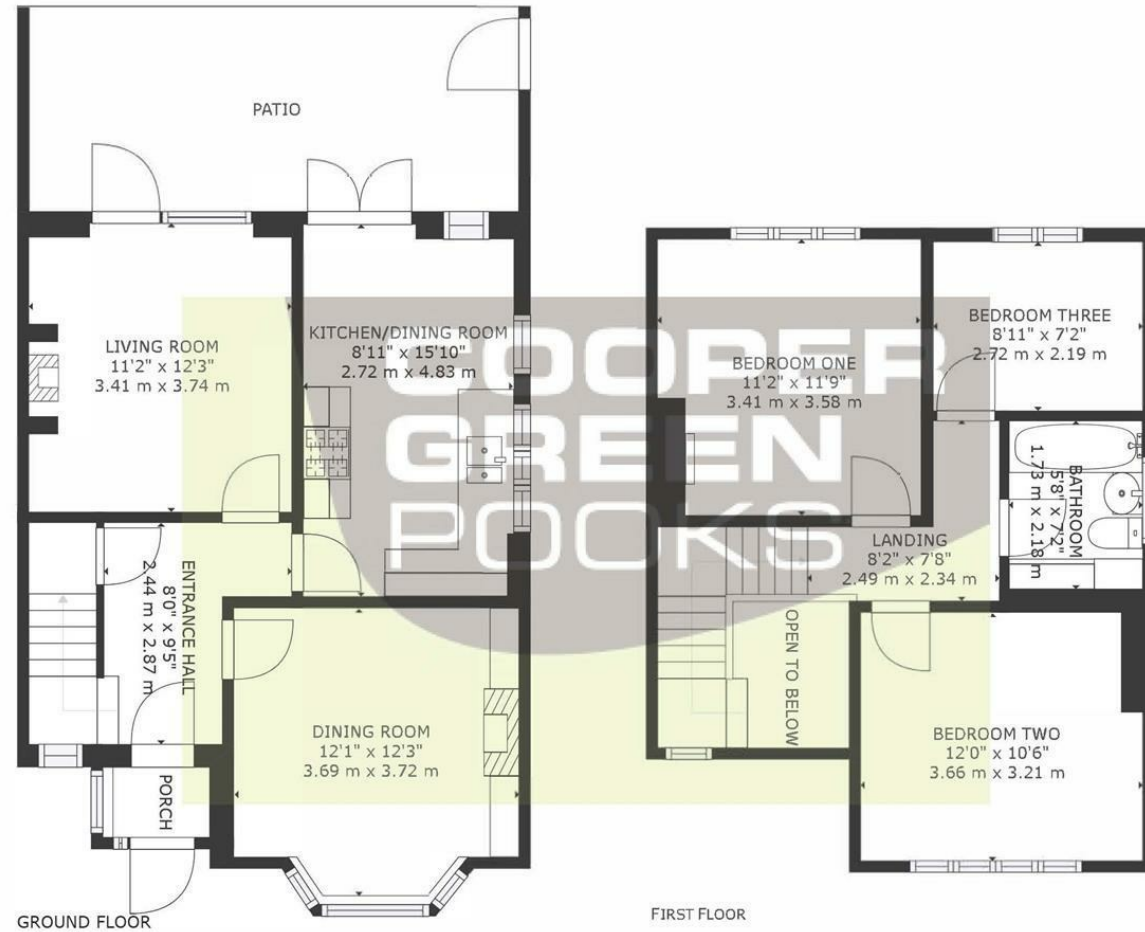
Unfurnished

Council Tax Band: C

Available: 9th December 2024

EPC: D

Floor Plans



GROSS INTERNAL AREA
 GROUND FLOOR: 524 sq. ft, 49 m², FIRST FLOOR: 475 sq. ft, 44 m²
 EXCLUDED AREAS: , PATIO: 182 sq. ft, 17 m²
 PORCH: 14 sq. ft, 1 m²
 TOTAL: 999 sq. ft, 93 m²
 SIZES AND DIMENSIONS ARE APPROXIMATE, ACTUAL MAY VARY.

These particulars, whilst believed to be accurate are set out as a general outline only for guidance and do not constitute any part of an offer or contract. Intending purchasers should not rely on them as statements of representation of fact, but must satisfy themselves by inspection or otherwise as to their accuracy. No person in this firm's employment has the authority to make or give any representation or warranty in respect of the property.