



Plot 136, The Avondale, Rose Place, Welshpool Road, Bicton Heath, Shrewsbury, SY3 5BU  
£523,000





Plot 136, The Avondale, Rose Place, Welshpool Road, Bicton Heath, Shrewsbury, SY3

**£523,000**

NEW RELEASE - This tasteful, double-fronted, detached home, with elegant sash-style windows, provides plenty of flexible living space. The Avondale's generous open-plan kitchen has a dedicated dining area with an attractive bay window, and a separate utility room. A large, triple aspect lounge leads to the garden via French doors and a separate study provides quiet space to work. Upstairs are four double bedrooms, the main with en-suite, and a family bathroom with bath and shower. Built to new Part L building regulations, to include solar panels, EV charging point and increased insulation etc.

PART EXCHANGE EVENT TAKING PLACE ON SATURDAY 22ND MARCH – PLEASE CONTACT CGP FOR MORE INFORMATION

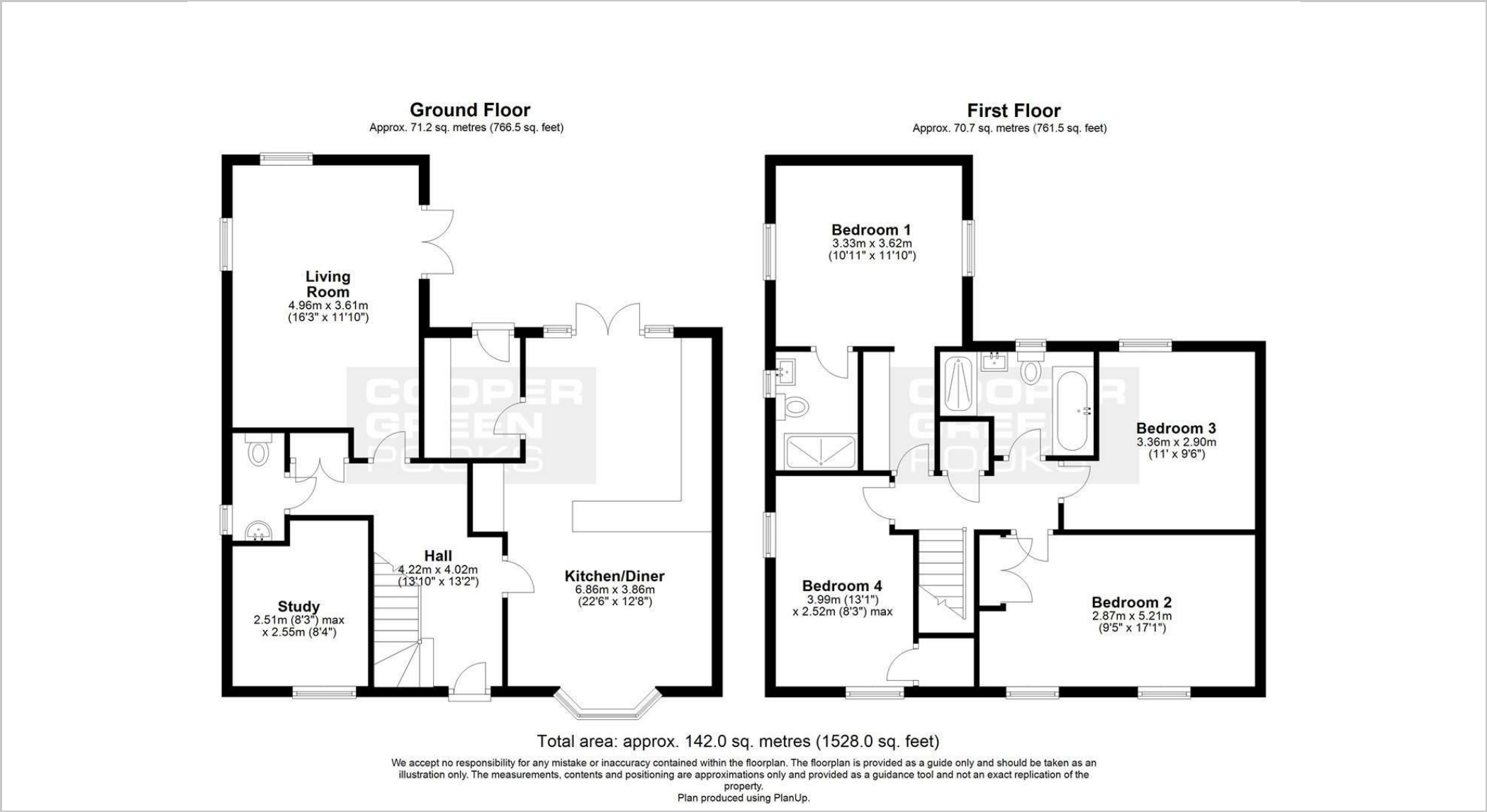
Description



null  
Council Tax Band: New Build  
Available:  
EPC:



Floor Plans



These particulars, whilst believed to be accurate are set out as a general outline only for guidance and do not constitute any part of an offer or contract. Intending purchasers should not rely on them as statements of representation of fact, but must satisfy themselves by inspection or otherwise as to their accuracy. No person in this firms employment has the authority to make or give any representation or warranty in respect of the property.