



Plot 136, The Avondale, Rose Place, Welshpool Road, Bicton Heath, Shrewsbury, SY3 5BU  
£523,000





Plot 136, The Avondale, Rose Place, Welshpool Road, Bicton Heath, Shrewsbury, SY3

**£523,000**

NEW RELEASE - This tasteful, double-fronted, detached home, with elegant sash-style windows, provides plenty of flexible living space. The Avondale's generous open-plan kitchen has a dedicated dining area with an attractive bay window, and a separate utility room. A large, triple aspect lounge leads to the garden via French doors and a separate study provides quiet space to work. Upstairs are four double bedrooms, the main with en-suite, and a family bathroom with bath and shower.

## Description



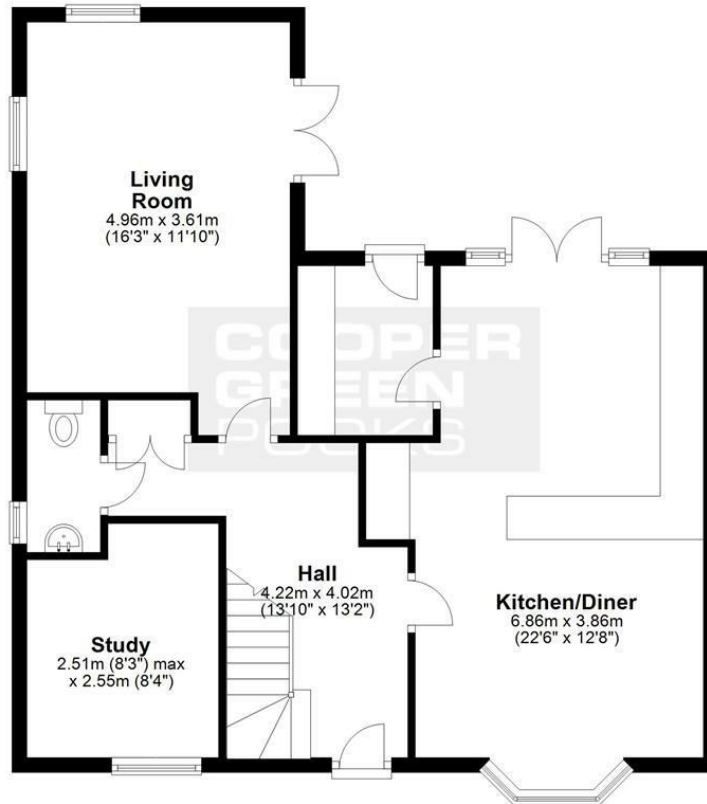
null  
Council Tax Band: New Build  
Available:  
EPC:



## Floor Plans

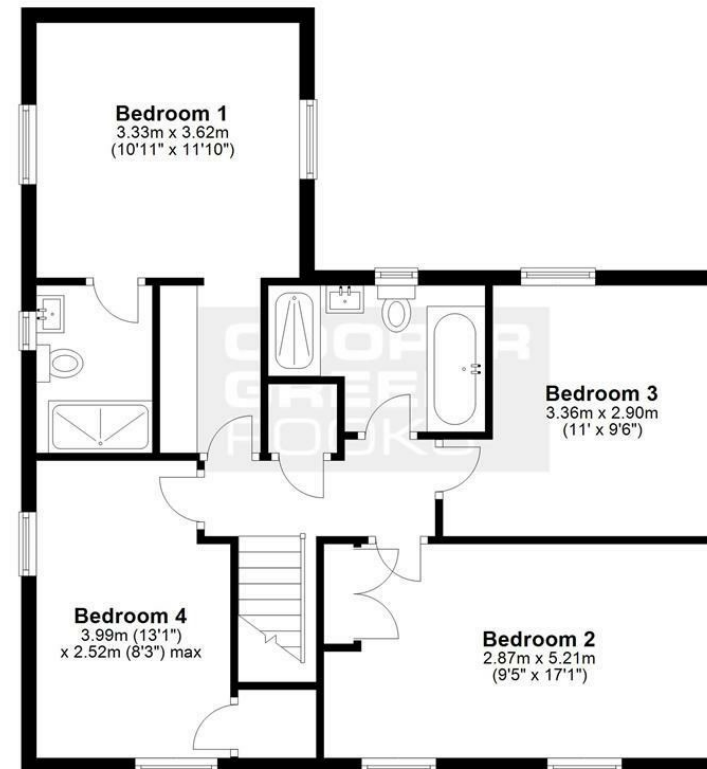
### Ground Floor

Approx. 71.2 sq. metres (766.5 sq. feet)



### First Floor

Approx. 70.7 sq. metres (761.5 sq. feet)



Total area: approx. 142.0 sq. metres (1528.0 sq. feet)

We accept no responsibility for any mistake or inaccuracy contained within the floorplan. The floorplan is provided as a guide only and should be taken as an illustration only. The measurements, contents and positioning are approximations only and provided as a guidance tool and not an exact replication of the property.  
Plan produced using PlanUp.

These particulars, whilst believed to be accurate are set out as a general outline only for guidance and do not constitute any part of an offer or contract. Intending purchasers should not rely on them as statements of representation of fact, but must satisfy themselves by inspection or otherwise as to their accuracy. No person in this firm's employment has the authority to make or give any representation or warranty in respect of the property.