



Plot 63, The Bradgate, Rose Place, Shrewsbury, SY3 5BU

£505,000



Plot 63, The Bradgate, Rose Place, Shrewsbury, SY3 5BU

£505,000

The Bradgate is a 4 bedroom house with spacious hallway, study and an impressive open-plan kitchen with family & dining areas that is the hub of the home. A walk in glazed-bay with French doors leads to the rear garden. Upstairs are 4 impressive bedrooms, the main bedroom with en-suite and all offering spaces for wardrobes and plenty of sockets. There is a separate utility room and a storage cupboard under the stairs - supporting clutter-free living at its finest.

Description



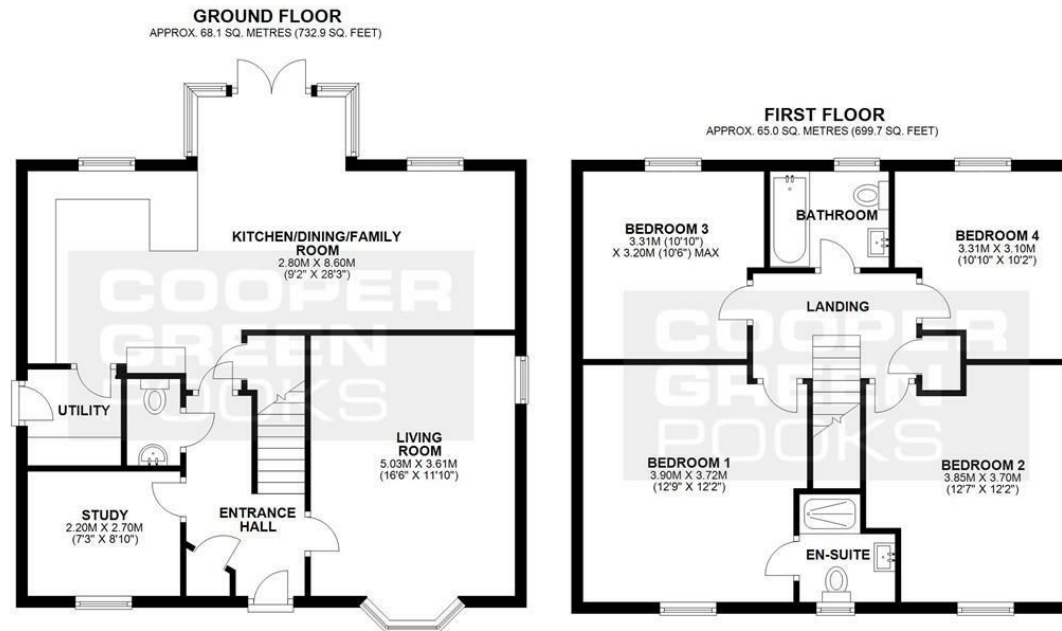
null

Council Tax Band: New Build

Available:

EPC:

Floor Plans



TOTAL AREA: APPROX. 133.1 SQ. METRES (1432.6 SQ. FEET)

We accept no responsibility for any mistake or inaccuracy contained within the floorplan. The floorplan is provided as a guide only and should be taken as an illustration only. The measurements, contents and positioning are approximations only and provided as a guidance tool and not an exact replication of the property.
Plan produced using PlanUp.

These particulars, whilst believed to be accurate are set out as a general outline only for guidance and do not constitute any part of an offer or contract. Intending purchasers should not rely on them as statements of representation of fact, but must satisfy themselves by inspection or otherwise as to their accuracy. No person in this firm's employment has the authority to make or give any representation or warranty in respect of the property.