



**21, Beddow Close, St Michaels Street, Shrewsbury, SY1 2NX**  
£1,300 Per Month



21, Beddow Close, St Michaels Street, Shrewsbury, SY1 2NX

**£1,300 Per Month**

VIRTUAL TOUR AVAILABLE - Spacious four bedroom townhouse occupying a quiet cul-de-sac position a short walk to Shrewsbury town centre and railway station. The property comes with two allocated parking spaces and a single garage.

Available: 01/01/25

## Description

Comprising: Entrance hall with WC and under stairs storage, modern kitchen with integrated fridge freezer, oven and gas hob, under counter space for washing machine, spacious living room with feature fireplace, conservatory with double doors to rear garden. Stairs to first floor landing, large bedroom with built in wardrobes and vanity, further double bedroom and bathroom with overhead shower. Stairs to second floor landing, primary bedroom with built in wardrobes and en suite shower room, large double bedroom with storage cupboard. Rear garden with patio. Two allocated parking spaces, single garage. Gas Central Heating. Double Glazing. EPC C.



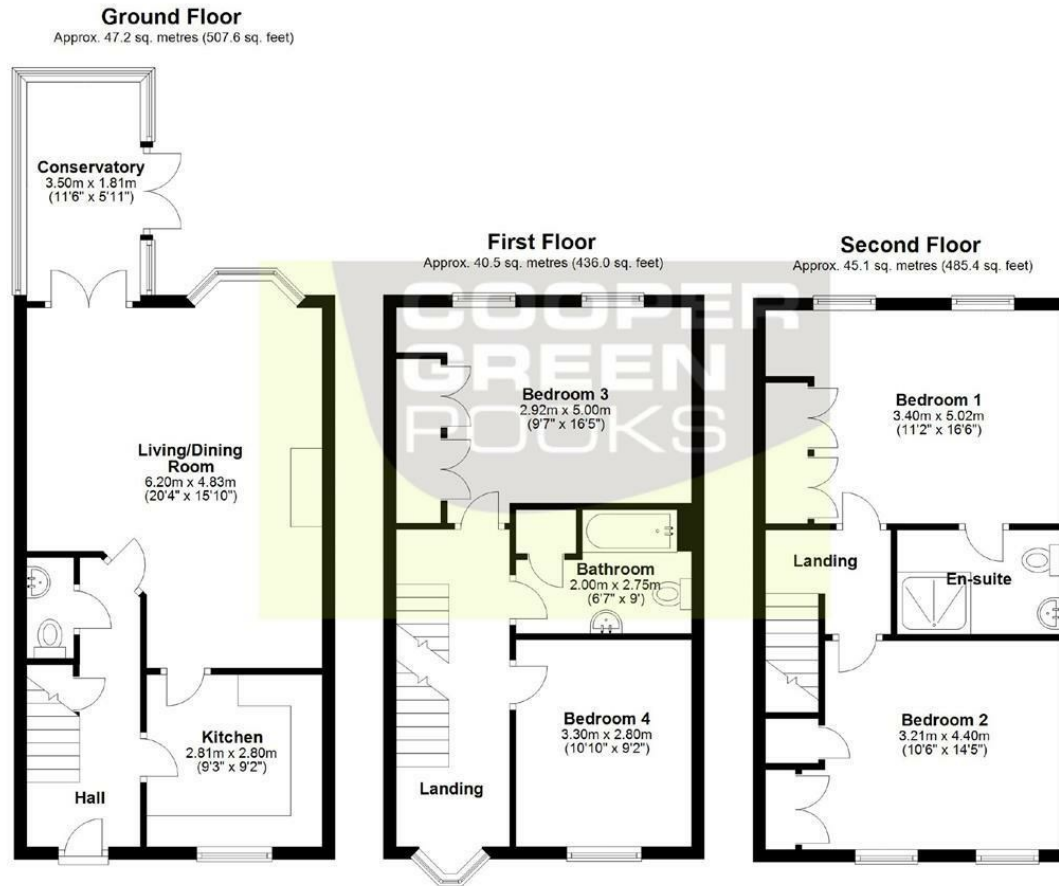
Unfurnished

Council Tax Band: D

Available: 1st January 2025

EPC: C

## Floor Plans



Total area: approx. 132.8 sq. metres (1429.0 sq. feet)

We accept no responsibility for any mistake or inaccuracy contained within the floorplan. The floorplan is provided as a guide only and should be taken as an illustration only. The measurements, contents and positioning are approximations only and provided as a guidance tool and not an exact replication of the property. Plan produced using PlanUp.

These particulars, whilst believed to be accurate are set out as a general outline only for guidance and do not constitute any part of an offer or contract. Intending purchasers should not rely on them as statements of representation of fact, but must satisfy themselves by inspection or otherwise as to their accuracy. No person in this firm's employment has the authority to make or give any representation or warranty in respect of the property.

3 Barker Street, Shrewsbury, Shropshire, SY1 1QF

Tel: 01743 276666 Email: [lettings@cgpooks.co.uk](mailto:lettings@cgpooks.co.uk) [www.cgpooks.co.uk](http://www.cgpooks.co.uk)