



**168 Wenlock Road, Shrewsbury, SY2 6LA**

3 bedroom semi-detached house—£350,000 Freehold



# 168 Wenlock Road, Shrewsbury, SY2 6LA

Coopergreenpooks.co.uk

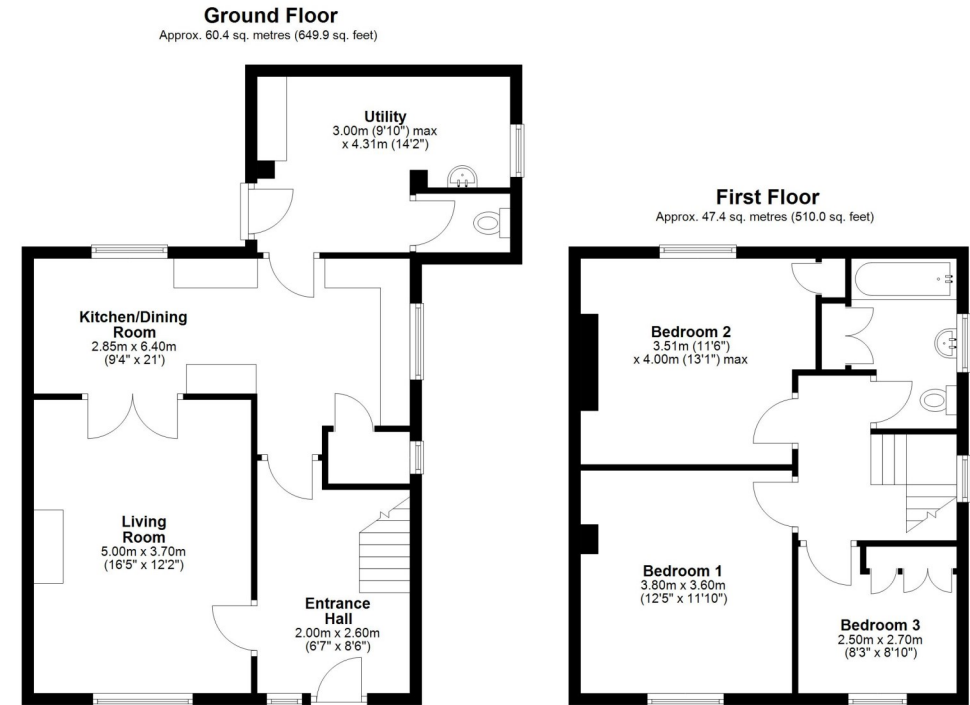
£350,000 Freehold—3 bedroom semi-detached house

sales@cgpooks.co.uk

Occupying a fantastic plot within a very popular area of town, this well-proportioned and improved semi-detached house offers practical accommodation with plenty of potential for further extension/development, while benefitting from a gated driveway and private gardens.

## KEY FEATURES

- Entrance hall with turning staircase to a light and spacious landing
- Large living room with feature fireplace and double doors onto the dining room
- Open plan kitchen/dining room with a range of fitted units, useful pantry and windows to two elevations
- Separate utility with cloakroom and access to side
- Two generous double bedrooms, a further single bedroom with built in wardrobes and a family bathroom on the first floor
- uPVC double glazed windows and gas fired central heating
- Private rear garden, laid to lawn with patio, timber stores and planted borders. The garden also extends to the front and side, kept very private by an established hedge
- Gated driveway providing parking for multiple vehicles
- This property offers plenty of potential to make the most of the sizeable plot by extending or developing, subject to necessary planning permission
- A great location, just a stones throw from Mereside primary school and park/woodland, as well as an excellent range of amenities, and less than two miles from the town centre



Total area: approx. 107.8 sq. metres (1159.8 sq. feet)

Cooper Green Pooks  
3 Barker Street  
Shrewsbury  
SY1 1QF

www.cgpooks.co.uk















## 168 Wenlock Road, Shrewsbury, SY2 6LA

£350,000 Freehold—3 bedroom semi-detached house  
sales@cgpooks.co.uk

Coopergreenpooks.co.uk



Cooper Green Pooks  
3 Barker Street  
Shrewsbury  
SY1 1QF

www.cgpooks.co.uk  
sales@cgpooks.co.uk  
01743 276666



rightmove 

 onTheMarket.com





# 168 Wenlock Road, Shrewsbury, SY2 6LA

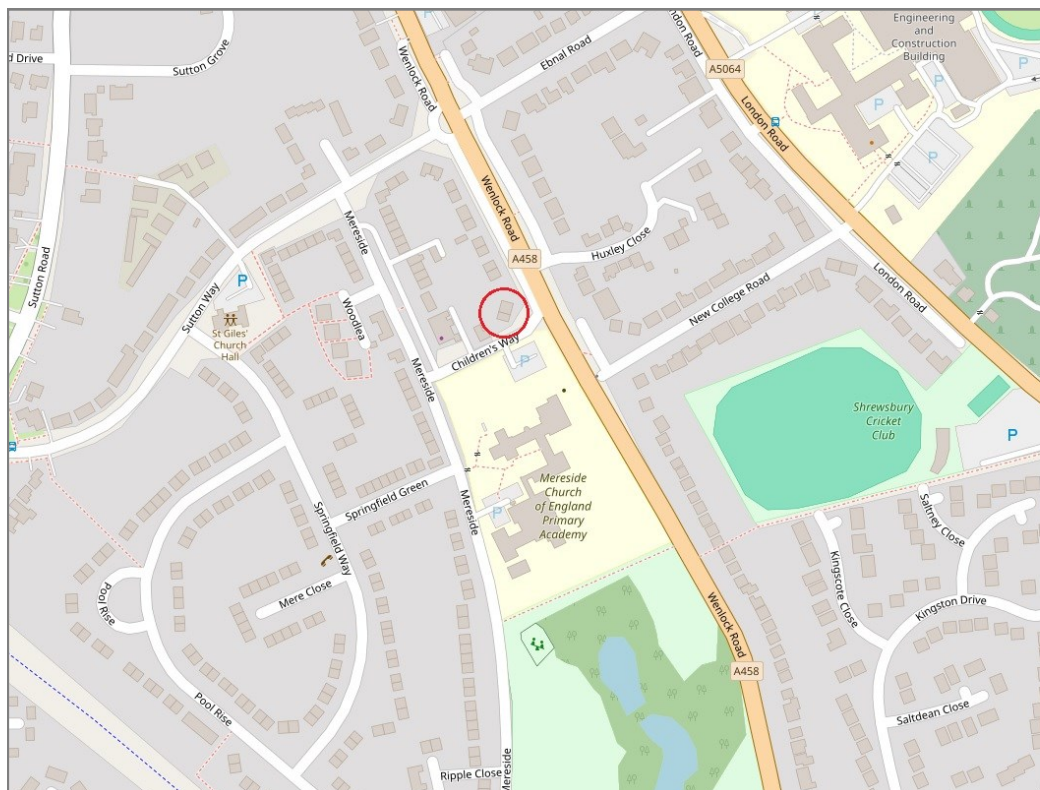
£350,000 Freehold—3 bedroom semi-detached house

sales@cgpooks.co.uk

rightmove 

 OnTheMarket.com

 **RICS**  
Regulated by RICS



**BOUNDARIES NOT CONFIRMED**

|                 |   |
|-----------------|---|
| Tenure          | <b>Freehold</b>                         |
| Local Authority | <b>Shropshire Council</b>               |
| Council Tax     | <b>Band C</b>                           |
| EPC Band        | <b>TBC</b>                              |
| Services        | <b>All mains services are connected</b> |

 **Expert mortgage advice available**

3 Barker St, Shrewsbury SY1 1QF

**Cooper Green Pooks**  
**01743 276666**



Your home may be repossessed if you do not keep up repayments on your mortgage.

There may be a fee for mortgage advice. The actual amount you pay will depend upon your circumstances. The fee is up to 1% but a typical fee is 0.3% of the amount borrowed.

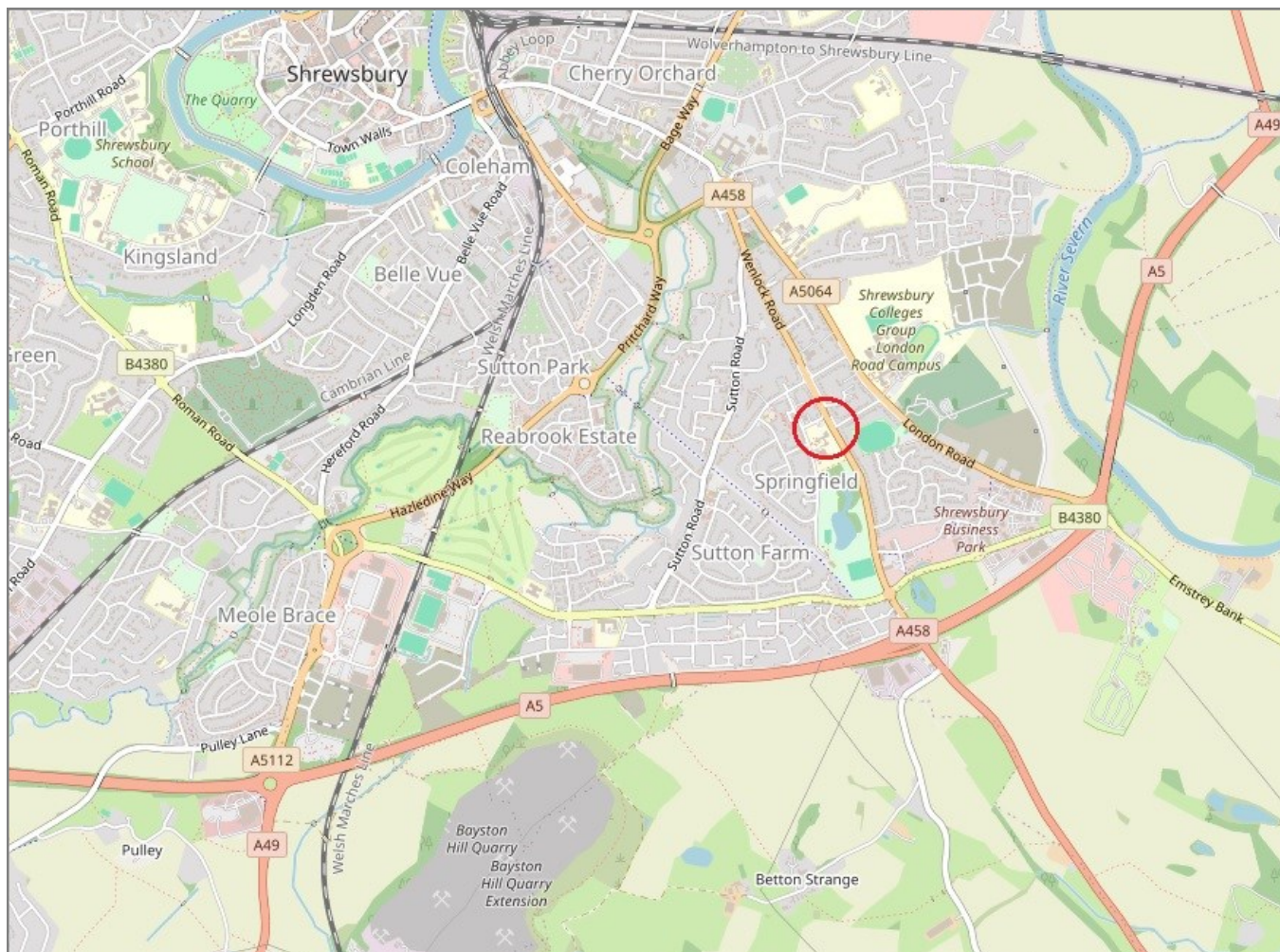


# 168 Wenlock Road, Shrewsbury, SY2 6LA

Coopergreenpooks.co.uk

£350,000 Freehold—3 bedroom semi-detached house

sales@cgpooks.co.uk



**IMPORTANT NOTICE:** Cooper Green Pooks for themselves and for the lessors or vendors of this property whose agents they are give notice that: 1 No appliances, services or service installations have been tested and no warranty as to suitability or serviceability is implied. Any prospective purchaser or lessee is advised to obtain verification from their surveyor or solicitor. 2. The particulars are set out as a general outline only for the guidance of the intended purchasers or lessees and do not constitute, nor constitute part of, an offer or contract. 3. All descriptions, reference to condition and necessary permissions for use and occupation and other details are given in good faith and are believed to be correct but any intending purchasers or lessees should not rely on them as statements or representation of fact but satisfy themselves by inspection or otherwise as to the correctness of each of them. 4. No person in the employment of Cooper Green Pooks has any authority to make or give any representation or warranty whatsoever in relation to this property. 5. All rentals and prices are quoted exclusive of Stamp Duty, legal and surveyors fees and any other associated purchasers or lessees costs. 6. Floor plans are indicative only and should not be relied on. 7. The plan showing the boundary of the property is indicative only and has not been checked against the legal title so should not be relied on. 8. All dimensions, floor areas and site areas are only approximate and should not be relied on. Dimensions are generally maximum room dimension.