



3 Salt Crescent, Kings Moat, Baschurch, Shrewsbury, SY4 2FS

4 bedroom detached house — £379,950 Freehold

3 Salt Crescent, Kings Moat, Baschurch, Shrewsbury, SY4 2FS

Coopergreenpooks.co.uk

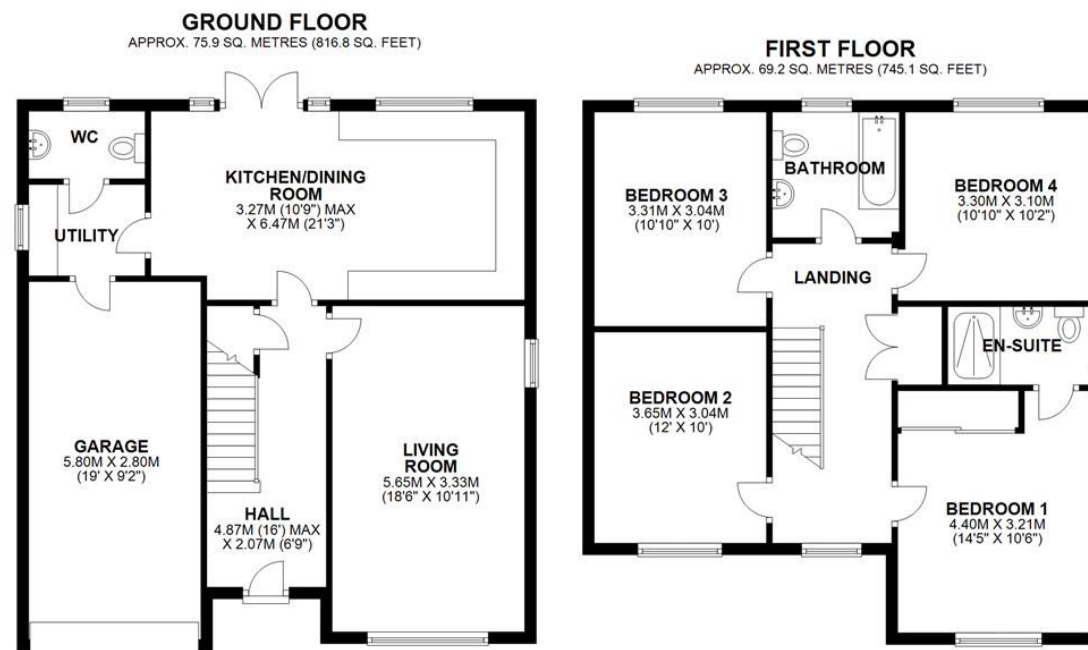
£379,950 Freehold — 4 bedroom detached house

sales@cgpooks.co.uk

Occupying a lovely position within an exclusive new build development, this thoughtfully designed detached family house offers well-proportioned and practical accommodation, finished to a high standard throughout, while benefitting from a private rear garden, driveway and garage.

KEY FEATURES

- Good sized entrance hall with useful under stairs storage and staircase to spacious landing
- Living room with windows to two elevations
- Impressive open plan kitchen/dining room, complete with integrated appliances and glazed double doors opening to the rear garden
- Separate utility providing access to both the cloakroom and integral garage
- Master bedroom with built in wardrobes and en-suite shower room
- Three further double bedrooms and well-appointed family bathroom
- A pleasant outlook from the first floor over green open space
- Generous private rear garden, laid to lawn with paved terrace and gated access to side
- Driveway to front providing plenty of parking
- Newly built by reputable local builders, Pickstock Homes, and covered by a 10 year NHBC warranty
- The property is situated within the popular village of Baschurch, walking distance from the village primary school and excellent Corbet secondary school. A great range of local amenities are also just a short distance away, including a supermarket, doctors surgery and a choice of pubs/restaurants, with the market town of Shrewsbury being just a 10 minute drive.



TOTAL AREA: APPROX. 145.1 SQ. METRES (1561.9 SQ. FEET)





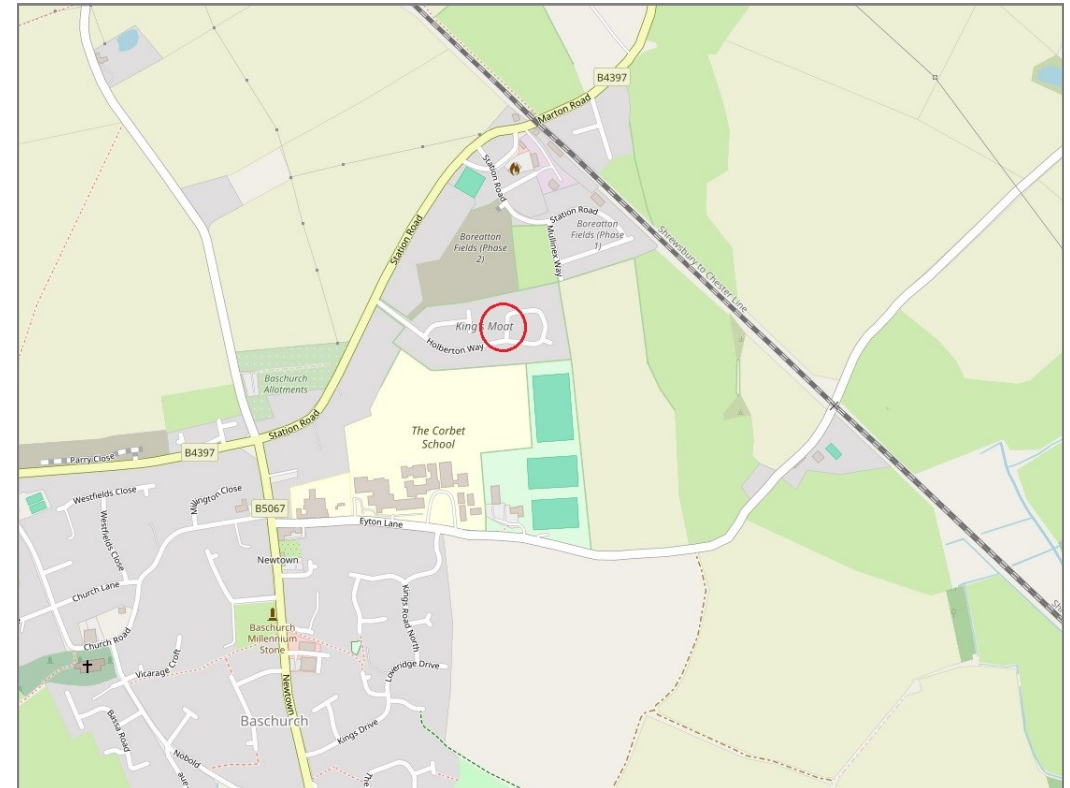




3 Salt Crescent, Kings Moat, Baschurch, Shrewsbury, SY4 2FS

£379,950 Freehold — 4 bedroom detached house

sales@cgpooks.co.uk



BOUNDARIES NOT CONFIRMED

Tenure	Freehold
Local Authority	Shropshire Council
Council Tax	TBC
EPC Band	Band B
Services	All mains services are connected

Expert mortgage advice available
3 Barker St, Shrewsbury SY1 1QF
Cooper Green Pooks
01743 276666



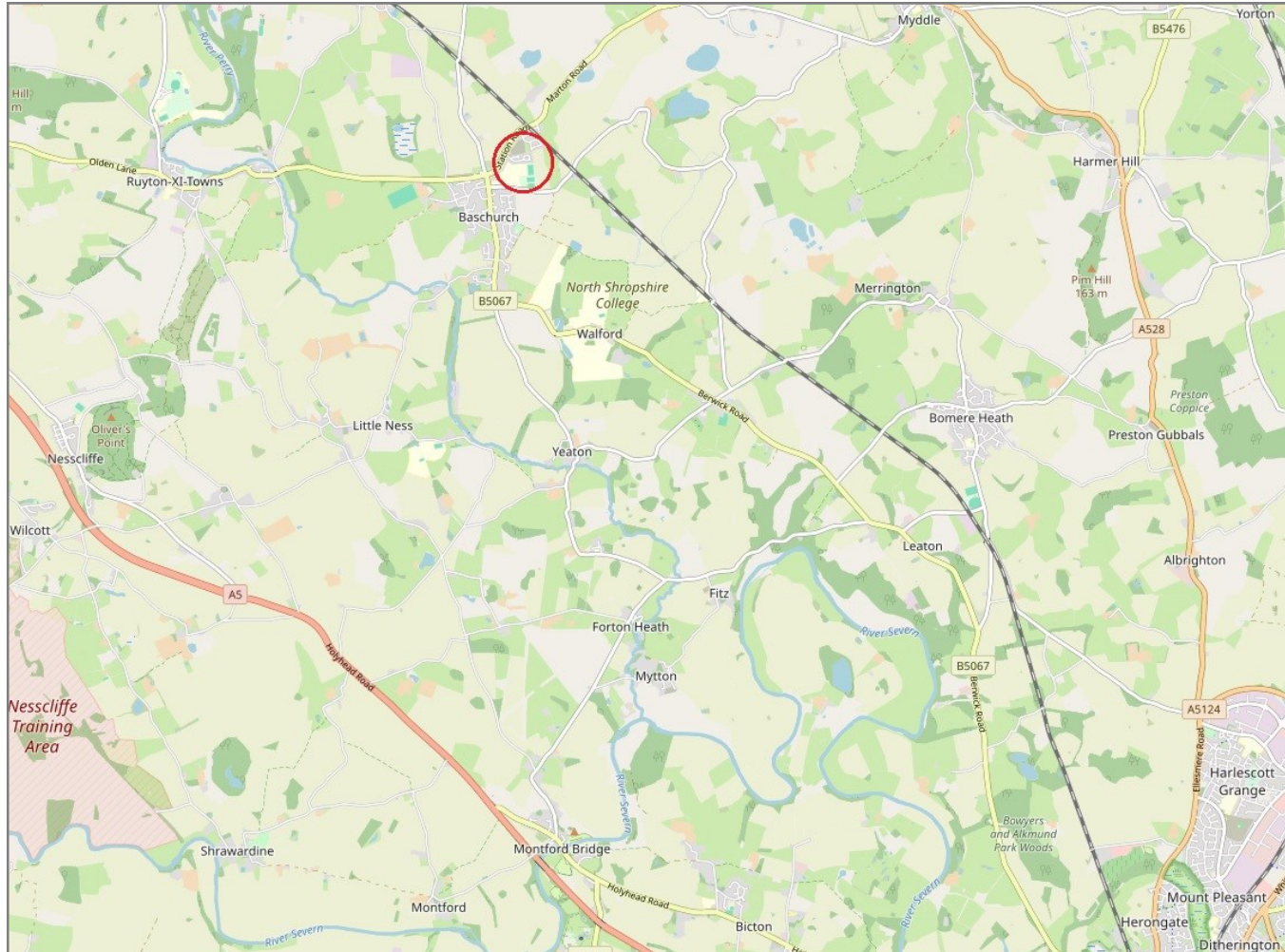
Your home may be repossessed if you do not keep up repayments on your mortgage.
There may be a fee for mortgage advice. The actual amount you pay will depend upon your circumstances. The fee is up to 1% but a typical fee is 0.3% of the amount borrowed.

3 Salt Crescent, Kings Moat, Baschurch, Shrewsbury, SY4 2FS

Coopergreenpooks.co.uk

£379,950 Freehold — 4 bedroom detached house

sales@cgpooks.co.uk



IMPORTANT NOTICE: Cooper Green Pooks for themselves and for the lessors or vendors of this property whose agents they are give notice that: 1 No appliances, services or service installations have been tested and no warranty as to suitability or serviceability is implied. Any prospective purchaser or lessee is advised to obtain verification from their surveyor or solicitor. 2. The particulars are set out as a general outline only for the guidance of the intended purchasers or lessees and do not constitute, nor constitute part of, an offer or contract. 3. All descriptions, reference to condition and necessary permissions for use and occupation and other details are given in good faith and are believed to be correct but any intending purchasers or lessees should not rely on them as statements or representation of fact but satisfy themselves by inspection or otherwise as to the correctness of each of them. 4. No person in the employment of Cooper Green Pooks has any authority to make or give any representation or warranty whatsoever in relation to this property. 5. All rentals and prices are quoted exclusive of Stamp Duty, legal and surveyors fees and any other associated purchasers or lessees costs. 6. Floor plans are indicative only and should not be relied on. 7. The plan showing the boundary of the property is indicative only and has not been checked against the legal title so should not be relied on. 8. All dimensions, floor areas and site areas are only approximate and should not be relied on. Dimensions are generally maximum room dimension.