



**20 Stiperstones Court, Abbey Foregate, Shrewsbury, SY2 6AL**

1 bedroom first floor apartment—£220,000 Leasehold



## 20 Stiperstones Court, Abbey Foregate, Shrewsbury, SY2 6AL

Coopergreenpooks.co.uk

£220,000 Leasehold—1 bedroom first floor apartment

sales@cgpooks.co.uk

A thoughtfully designed and spacious one bedroom apartment with private terrace and views towards The Abbey, located within a purpose-built McCarthy and Stone 'Living Plus' development and ideally situated just a short walk from a wide range of amenities, as well as the Quarry Park and town centre.

### KEY FEATURES

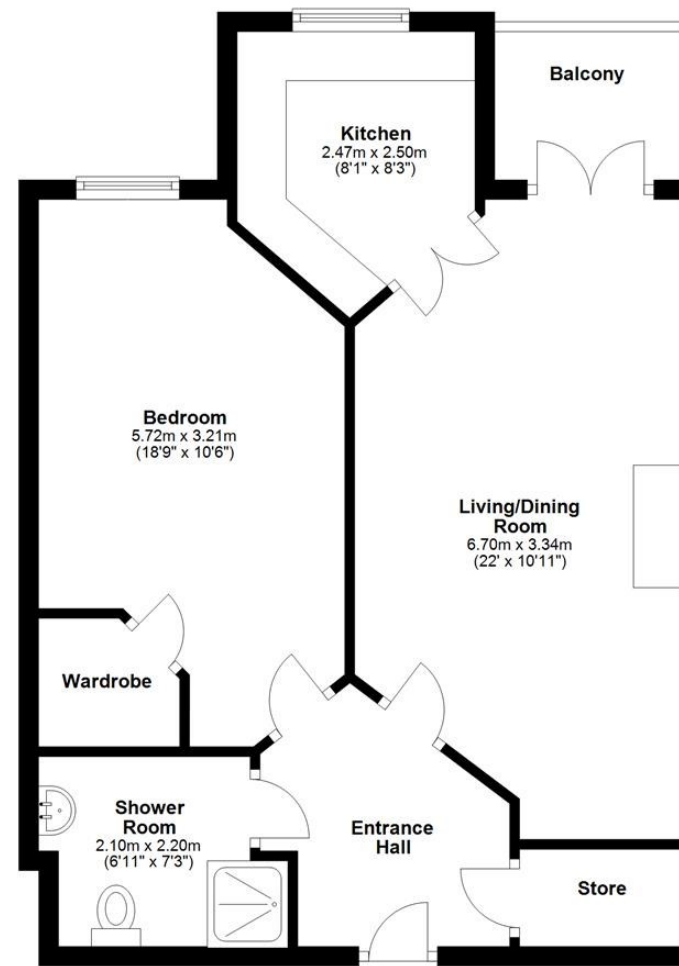
- Private entrance hall with large useful store
- Good sized living/dining room with glazed double doors opening to a lovely private terrace which offers views towards The Abbey
- Modern kitchen, complete with integrated appliances
- Double bedroom with walk-in wardrobe and separate wet room
- The property has recently been newly carpeted throughout
- Very attractive communal gardens along with a lovely sun terrace
- Fantastic Assisted Living development, which has been designed exclusively with the over 70's in mind, allowing you to carry on living independently with on-site care and a superb range of facilities
- Stylish and spacious communal areas - including residents lounge and table service restaurant, as well as a well-equipped laundry
- Wheelchair/scooter accessibility, and lift access to all floors
- Sold with no upward chain

Cooper Green Pooks  
3 Barker Street  
Shrewsbury  
SY1 1QF

www.cgpooks.co.uk  
sales@cgpooks.co.uk



**First Floor**  
Approx. 56.1 sq. metres (603.4 sq. feet)



Total area: approx. 56.1 sq. metres (603.4 sq. feet)













# 20 Stiperstones Court, Abbey Foregate, Shrewsbury, SY2 6AL

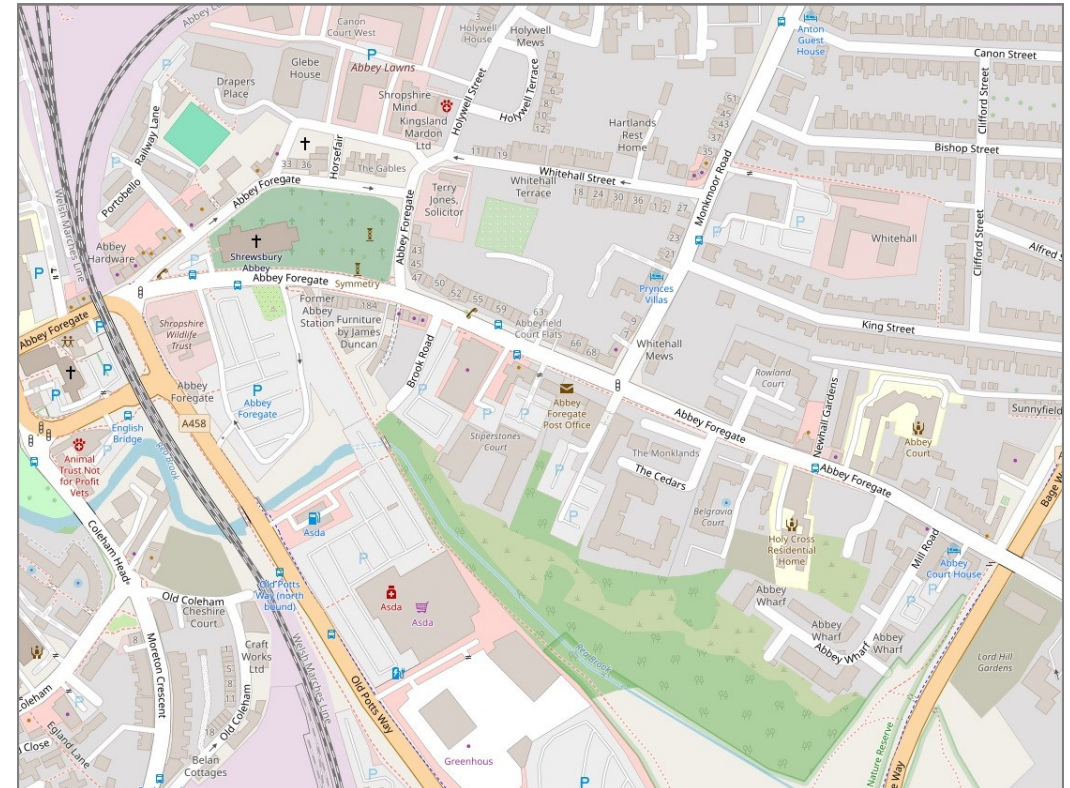
£220,000 Leasehold—1 bedroom first floor apartment

sales@cgpooks.co.uk

rightmove 

 OnTheMarket.com

 **RICS**  
Regulated by RICS



**BOUNDARIES NOT CONFIRMED**

Local Authority	<b>Shropshire Council</b>
Council Tax	<b>Band C</b>
EPC Band	<b>Band B</b>
Services	<b>Mains water, electricity and drainage are connected</b>
	<b>Heating is electric</b>

Tenure	<b>Leasehold</b>
Lease Length	<b>250 years from Dec 2014</b>
Service Charge	<b>£8,956.51 PA</b>
Ground Rent	<b>£435 PA</b>

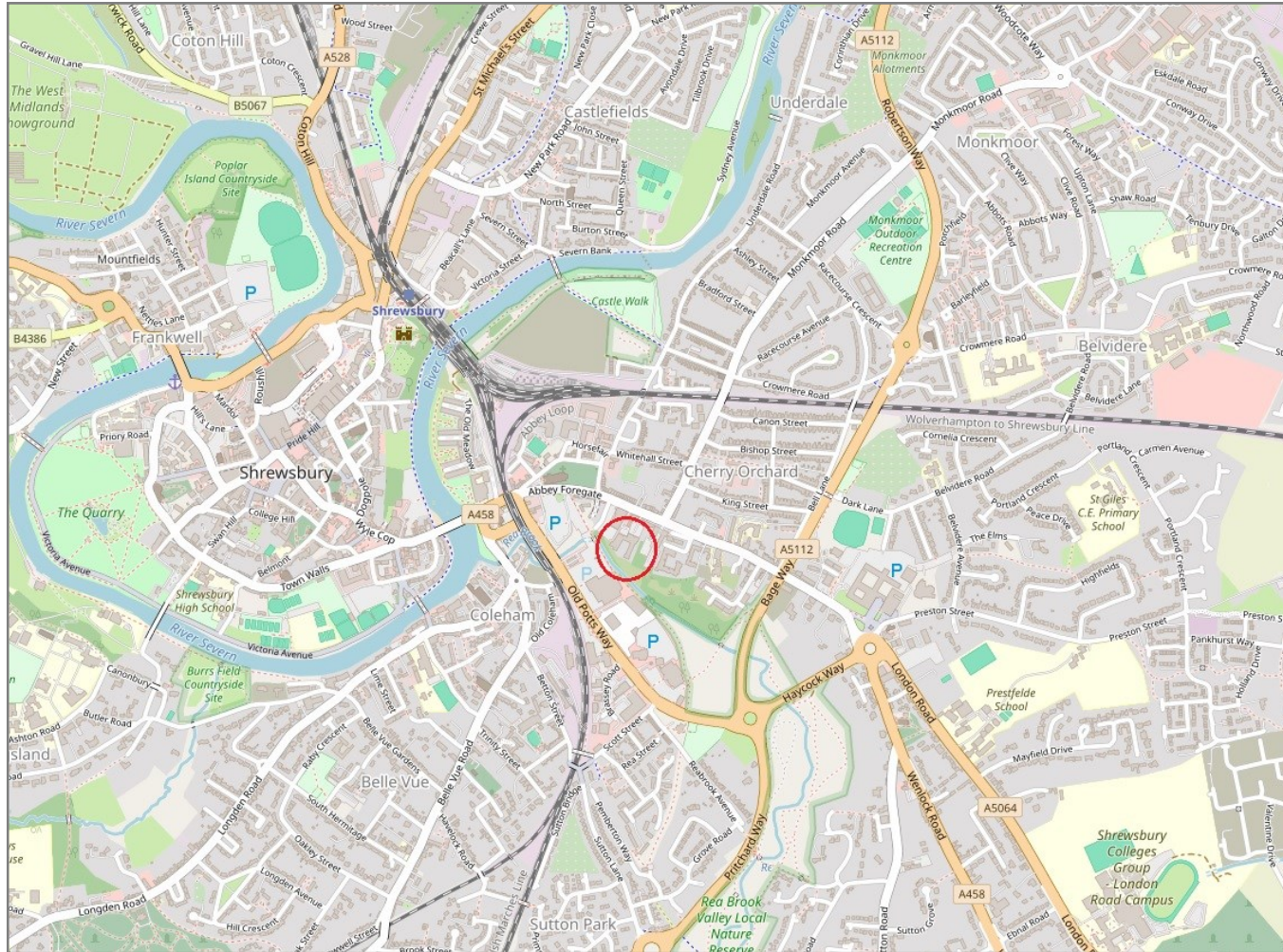


# 20 Stiperstones Court, Abbey Foregate, Shrewsbury, SY2 6AL

Coopergreenpooks.co.uk

£220,000 Leasehold—1 bedroom first floor apartment

sales@cgpooks.co.uk



**IMPORTANT NOTICE:** Cooper Green Pooks for themselves and for the lessors or vendors of this property whose agents they are give notice that: 1 No appliances, services or service installations have been tested and no warranty as to suitability or serviceability is implied. Any prospective purchaser or lessee is advised to obtain verification from their surveyor or solicitor. 2. The particulars are set out as a general outline only for the guidance of the intended purchasers or lessees and do not constitute, nor constitute part of, an offer or contract. 3. All descriptions, reference to condition and necessary permissions for use and occupation and other details are given in good faith and are believed to be correct but any intending purchasers or lessees should not rely on them as statements or representation of fact but satisfy themselves by inspection or otherwise as to the correctness of each of them. 4. No person in the employment of Cooper Green Pooks has any authority to make or give any representation or warranty whatsoever in relation to this property. 5. All rentals and prices are quoted exclusive of Stamp Duty, legal and surveyors fees and any other associated purchasers or lessees costs. 6. Floor plans are indicative only and should not be relied on. 7. The plan showing the boundary of the property is indicative only and has not been checked against the legal title so should not be relied on. 8. All dimensions, floor areas and site areas are only approximate and should not be relied on. Dimensions are generally maximum room dimension.