



1 Bank Passage Apartments, High Street, Shrewsbury SY1 1SP

2 bedroom ground floor apartment—£225,000 Leasehold

1 Bank Passage Apartments, High Street, Shrewsbury SY1 1SP

Coopergreenpooks.co.uk

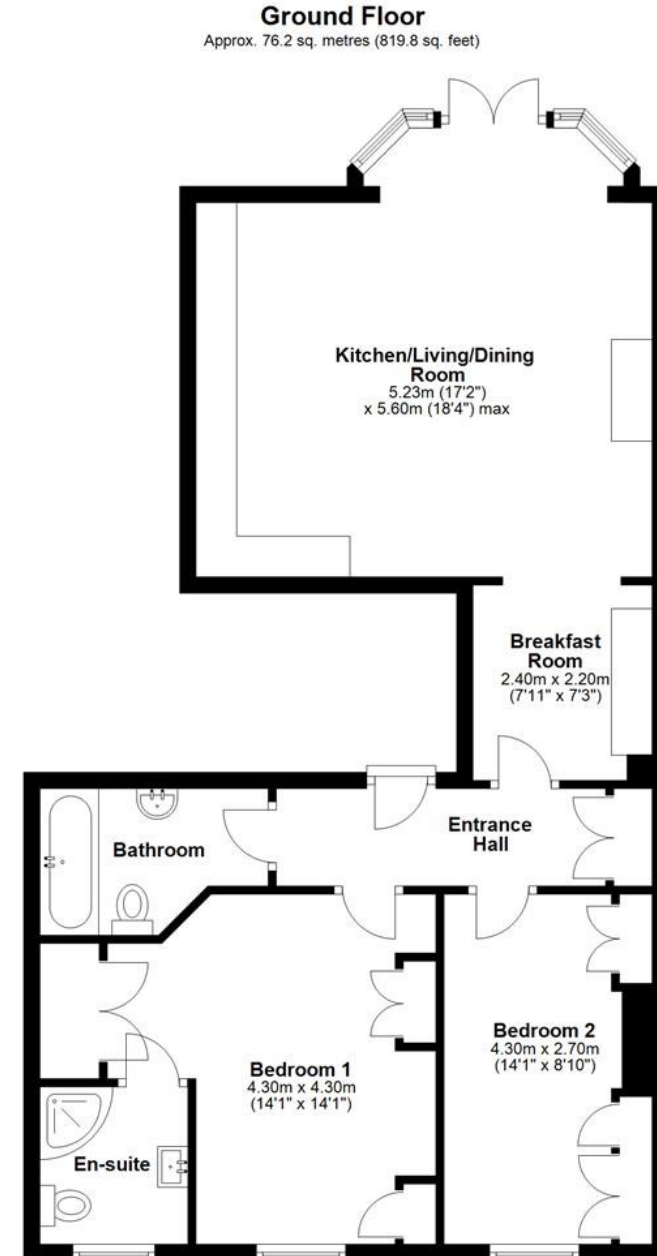
£225,000 Leasehold—2 bedroom ground floor apartment

sales@cgpooks.co.uk

This light and well-proportioned two bedroom apartment offers practical and thoughtfully designed accommodation, situated within the heart of the town centre, while benefitting from a private courtyard garden.

KEY FEATURES

- Neatly presented communal entrance and a good sized private inner hallway with useful storage
- Fantastic open plan kitchen/living/dining room with a feature fireplace and glazed doors onto the garden
- A well-fitted range of units to the kitchen, complete with fully integrated appliances
- Versatile breakfast room, which is also open plan to the living area, which would also make a great study
- Large master bedroom with built in wardrobes and en-suite shower room
- A further double bedroom, also having built in storage, and separate family bathroom
- Lovely private courtyard garden, laid to artificial lawn, with views towards both St Alkmund's and St Julians Church
- The apartment forms part of this very attractive building of character, accessed via the historical Bank Passage which connects High Street to Fish Street
- Located within the centre of town, a stone's throw from a choice of excellent bars, restaurants and shopping areas, as well as being just a short walk from the Quarry Park and beautiful riverside walks
- Sold with no upward chain



Total area: approx. 76.2 sq. metres (819.8 sq. feet)





1 Bank Passage Apartments, High Street, Shrewsbury SY1 1SP

Coopergreenpooks.co.uk

£225,000 Leasehold—2 bedroom ground floor apartment

sales@cgpooks.co.uk



Cooper Green Pooks
3 Barker Street
Shrewsbury
SY1 1QF

www.cgpooks.co.uk
sales@cgpooks.co.uk
01743 276666



1 Bank Passage Apartments, High Street, Shrewsbury SY1 1SP

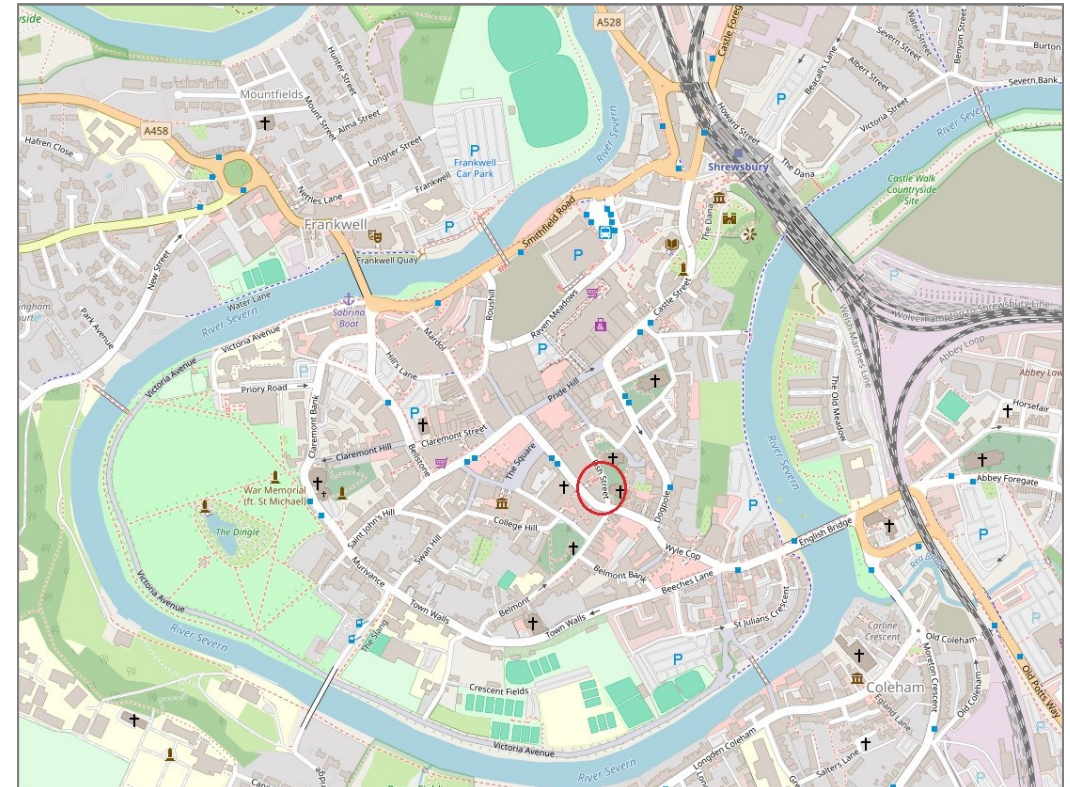
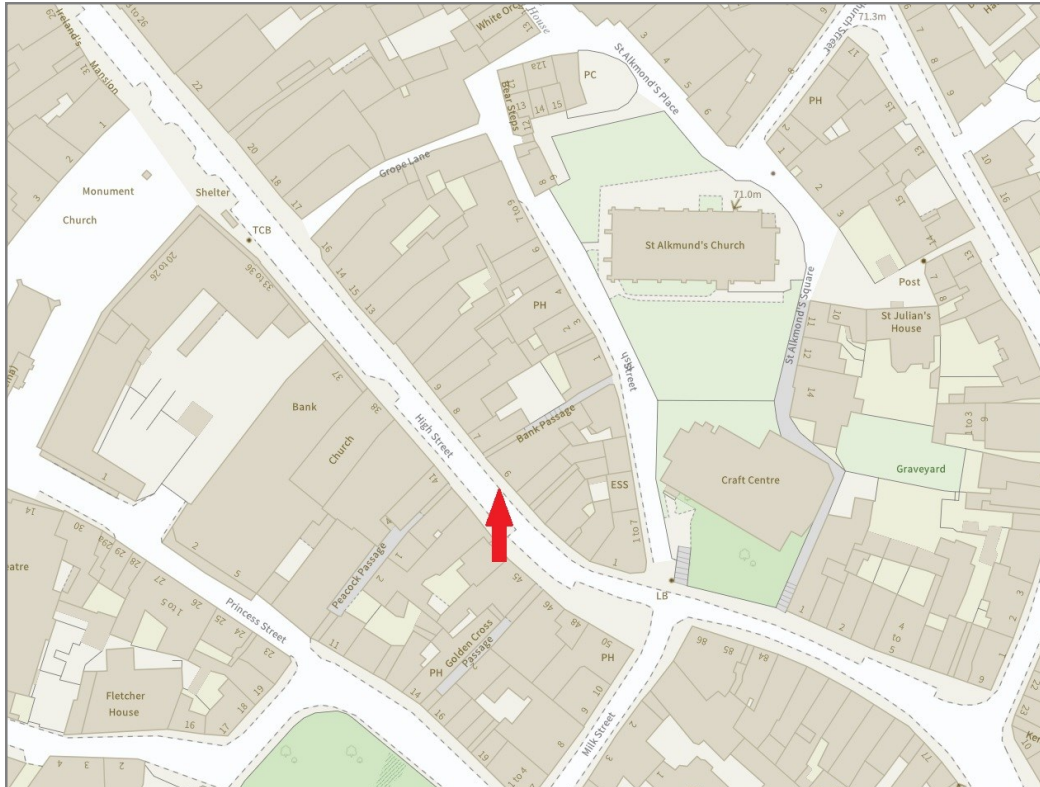
£225,000 Leasehold—2 bedroom ground floor apartment

sales@cgpooks.co.uk

rightmove

onTheMarket.com

RICS
Regulated by RICS



BOUNDARIES NOT CONFIRMED

Tenure	Leasehold
Lease Length	181 years remaining
Service Charge	£2404 PA
Ground Rent	£75 PA

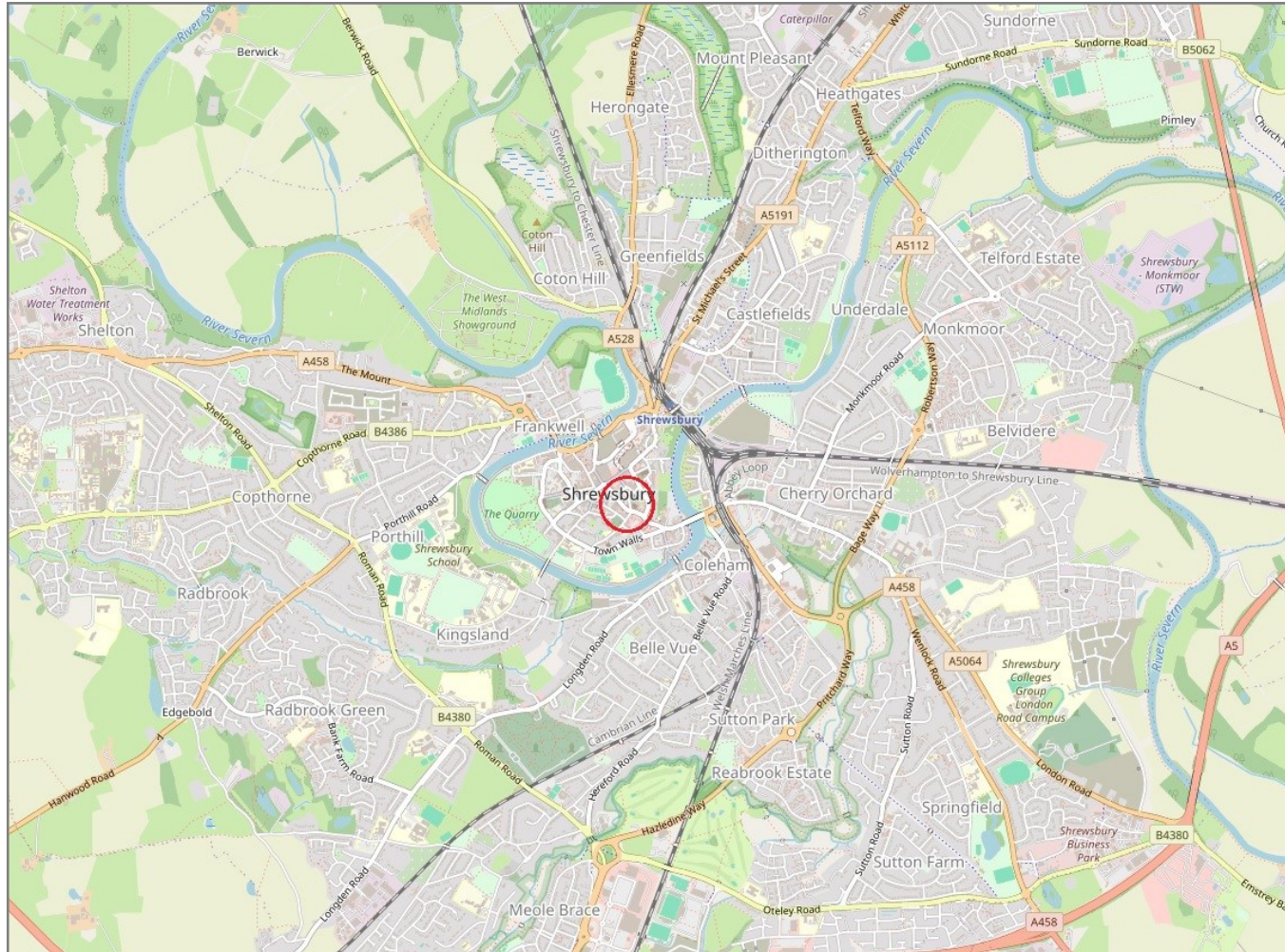
Local Authority	Shropshire Council
Council Tax	Band C
EPC Band	Band C
Services	All mains services are connected

1 Bank Passage Apartments, High Street, Shrewsbury SY1 1SP

Coopergreenpooks.co.uk

£225,000 Leasehold—2 bedroom ground floor apartment

sales@cgpooks.co.uk



IMPORTANT NOTICE: Cooper Green Pooks for themselves and for the lessors or vendors of this property whose agents they are give notice that: 1 No appliances, services or service installations have been tested and no warranty as to suitability or serviceability is implied. Any prospective purchaser or lessee is advised to obtain verification from their surveyor or solicitor. 2. The particulars are set out as a general outline only for the guidance of the intended purchasers or lessees and do not constitute, nor constitute part of, an offer or contract. 3. All descriptions, reference to condition and necessary permissions for use and occupation and other details are given in good faith and are believed to be correct but any intending purchasers or lessees should not rely on them as statements or representation of fact but satisfy themselves by inspection or otherwise as to the correctness of each of them. 4. No person in the employment of Cooper Green Pooks has any authority to make or give any representation or warranty whatsoever in relation to this property. 5. All rentals and prices are quoted exclusive of Stamp Duty, legal and surveyors fees and any other associated purchasers or lessees costs. 6. Floor plans are indicative only and should not be relied on. 7. The plan showing the boundary of the property is indicative only and has not been checked against the legal title so should not be relied on. 8. All dimensions, floor areas and site areas are only approximate and should not be relied on. Dimensions are generally maximum room dimension.