



9 Mount Way, Pontesbury, Shrewsbury SY5 0RB

2 bedroom detached house—£290,000 Freehold

9 Mount Way, Pontesbury, Shrewsbury SY5 0RB

Coopergreenpooks.co.uk

£290,000 Freehold—2 bedroom detached house

sales@cgpooks.co.uk

This neatly presented and improved detached bungalow offers practical and well-proportioned accommodation, occupying a lovely position within a popular village, while benefitting from a private rear garden, driveway parking and garage.

KEY FEATURES

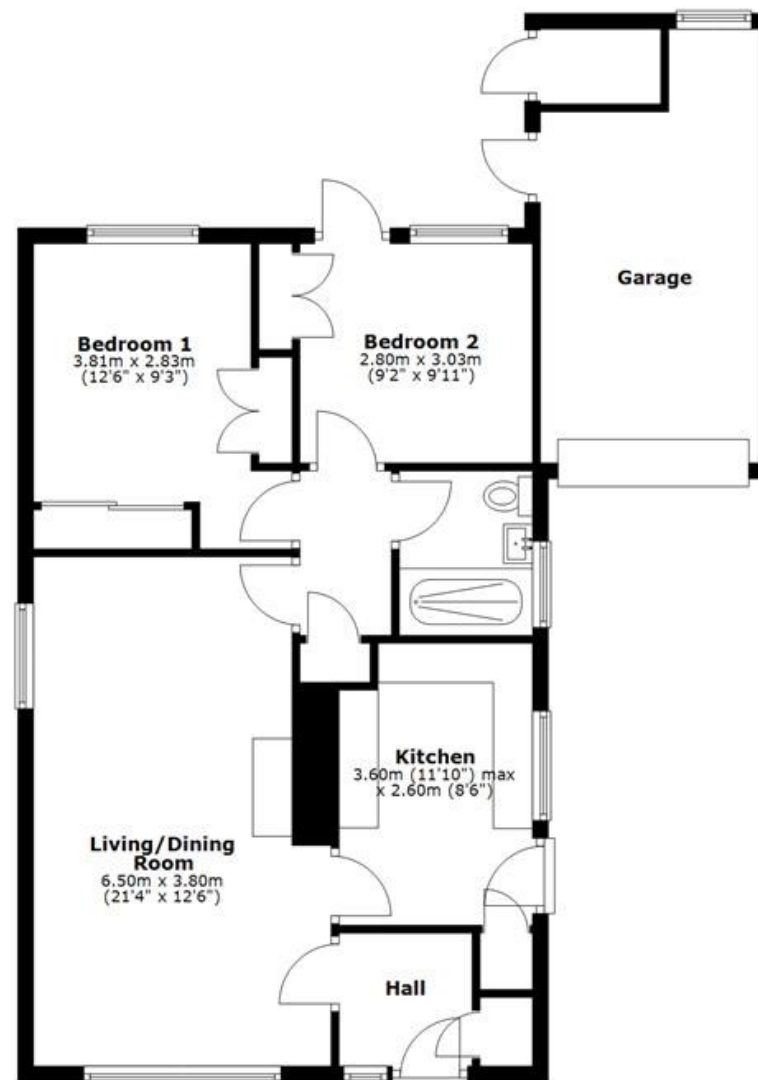
- Entrance hall with useful storage
- Good sized living room with feature fireplace and windows to two elevations
- Modern re-fitted kitchen, complete with integrated appliances and access to side
- Two double bedrooms with built in wardrobes and a glazed door to the garden off bedroom two
- Recently replaced shower room with double length walk-in shower and vanity unit
- uPVC double glazed windows and oil fired central heating
- Private rear garden, laid to lawn with paved terrace and planted borders
- Driveway to front providing parking and access to the single garage, which also has a door to the garden and separate store
- A very quiet and convenient location, a short walk from Pontesbury's excellent range of amenities, as well as being just 15 minutes from Shrewsbury town centre
- Sold with no upward chain

Cooper Green Pooks
3 Barker Street
Shrewsbury
SY1 1QF

www.cgpooks.co.uk
sales@cgpooks.co.uk
01743 276666



Ground Floor
Approx. 83.3 sq. metres (896.7 sq. feet)



Total area: approx. 83.3 sq. metres (896.7 sq. feet)

We accept no responsibility for any mistake or inaccuracy contained within the floorplan. The floorplan is provided as a guide only and should be taken as an illustration only. The measurements, contents and positioning are approximations only and provided as a guidance tool and not an exact replication of the property. Plan produced using PlanUp.





9 Mount Way, Pontesbury, Shrewsbury SY5 0RB

Coopergreenpooks.co.uk

£290,000 Freehold—2 bedroom detached house

sales@cgpooks.co.uk



Cooper Green Pooks
3 Barker Street
Shrewsbury
SY1 1QF

www.cgpooks.co.uk
sales@cgpooks.co.uk
01743 276666



9 Mount Way, Pontesbury, Shrewsbury SY5 0RB

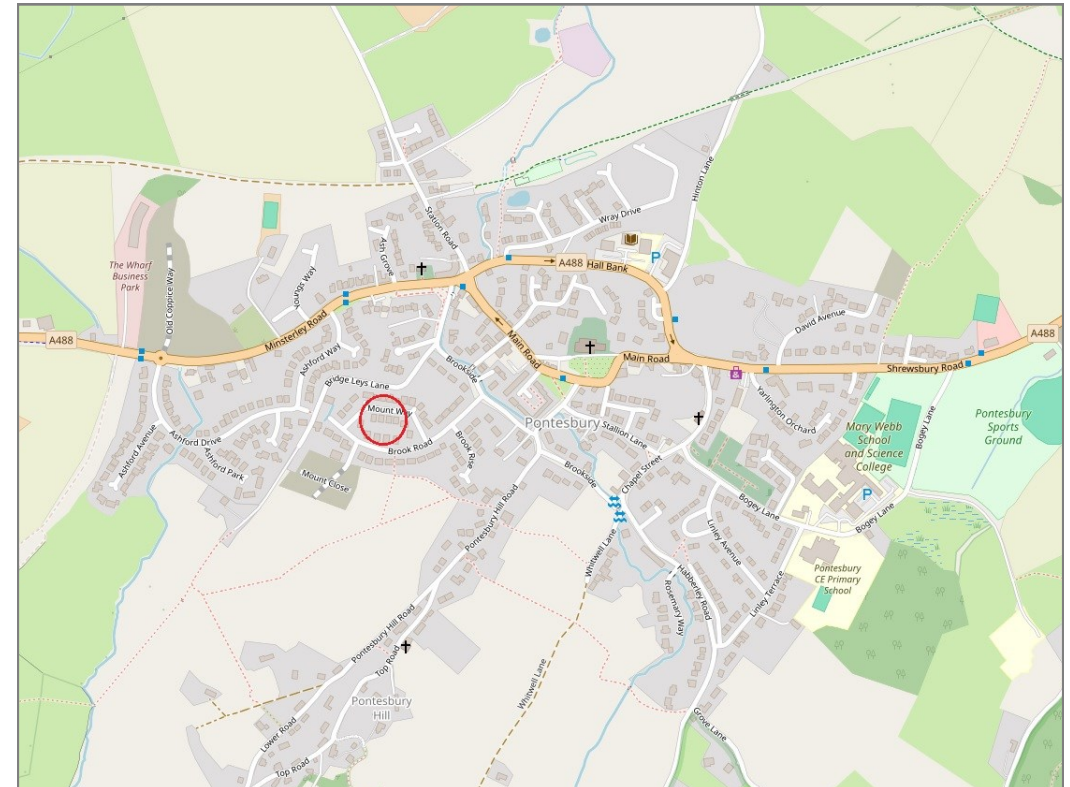
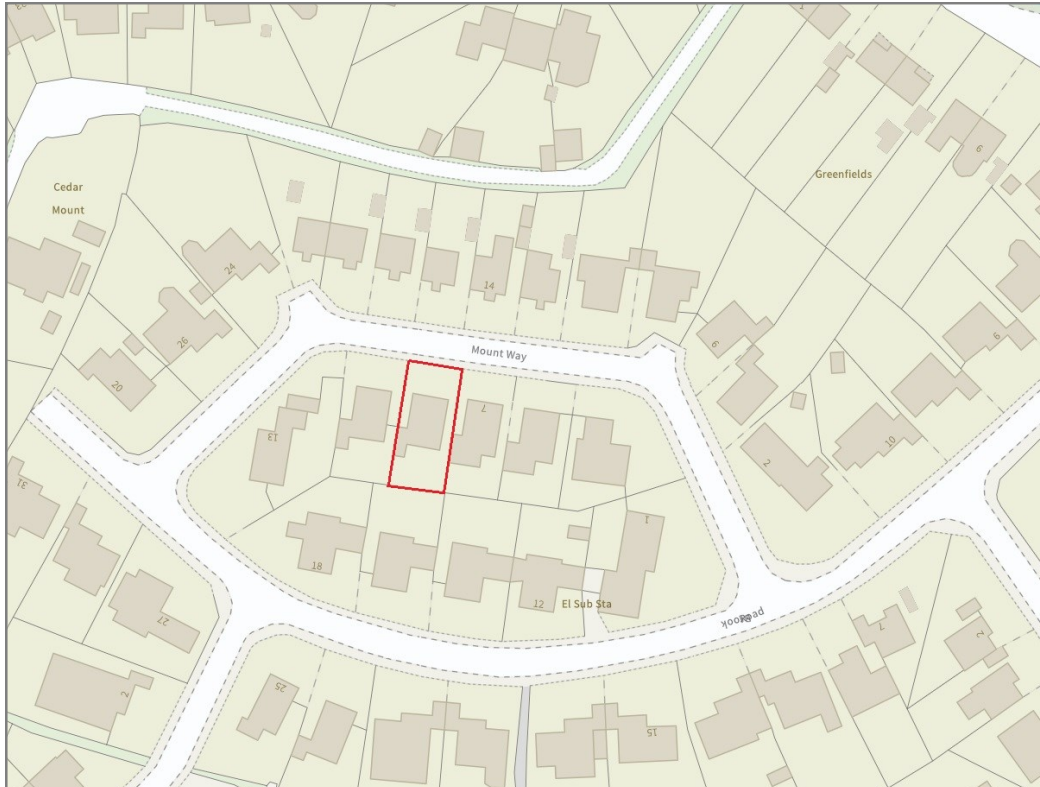
£290,000 Freehold—2 bedroom detached house

sales@cgpooks.co.uk

rightmove 

 OnTheMarket.com

 **RICS**
Regulated by RICS



BOUNDARIES NOT CONFIRMED

Tenure	Freehold
Local Authority	Shropshire Council
Council Tax	Band C
EPC Band	Band D
Services	Mains services water, drainage and electricity are connected
	Heating is oil

 **Expert mortgage advice available**

3 Barker St, Shrewsbury SY1 1QF

Cooper Green Pooks
01743 276666



Your home may be repossessed if you do not keep up repayments on your mortgage.

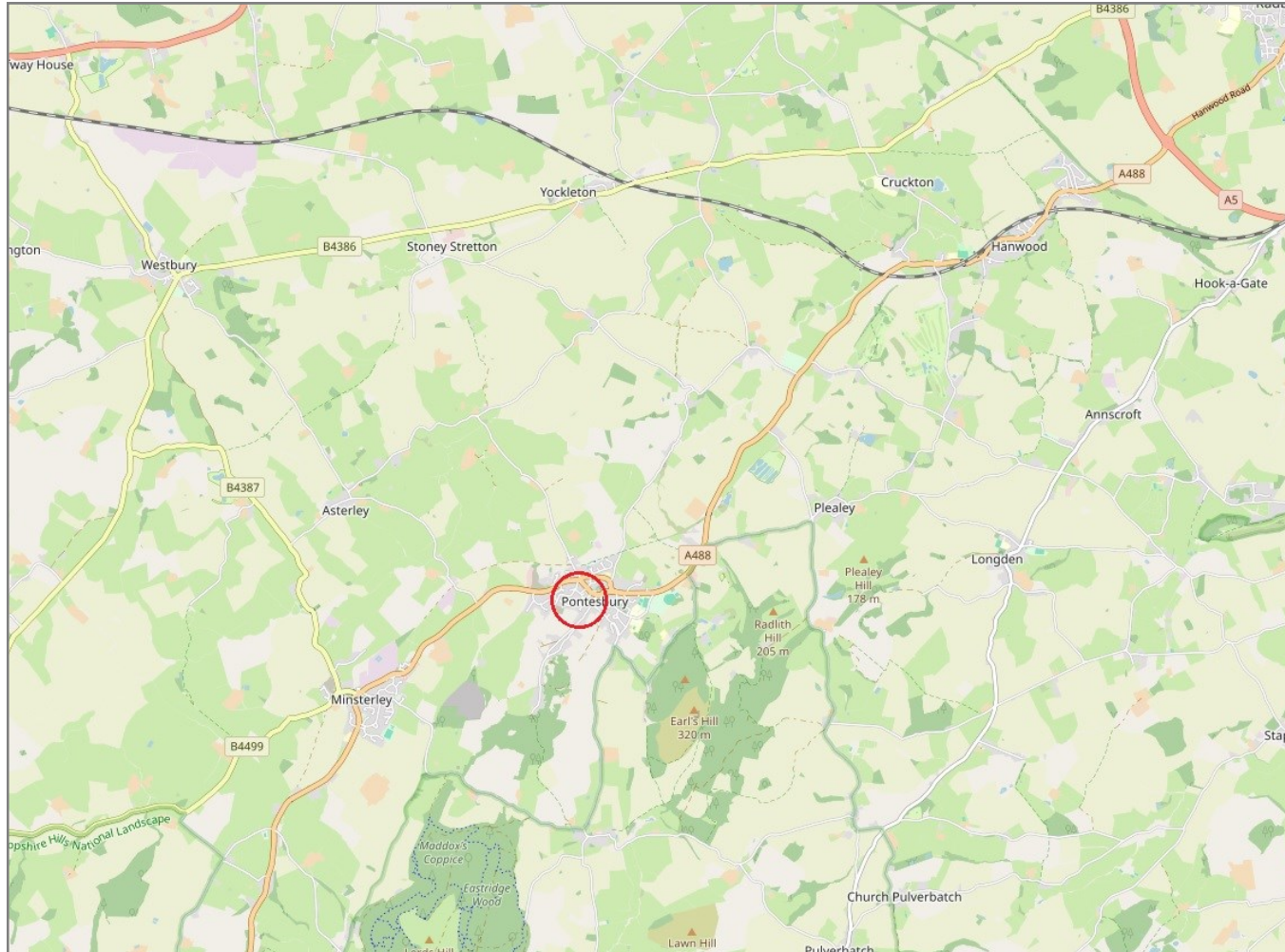
There may be a fee for mortgage advice. The actual amount you pay will depend upon your circumstances. The fee is up to 1% but a typical fee is 0.3% of the amount borrowed.

9 Mount Way, Pontesbury, Shrewsbury SY5 0RB

Coopergreenpooks.co.uk

£290,000 Freehold—2 bedroom detached house

sales@cgpooks.co.uk



IMPORTANT NOTICE: Cooper Green Pooks for themselves and for the lessors or vendors of this property whose agents they are give notice that: 1 No appliances, services or service installations have been tested and no warranty as to suitability or serviceability is implied. Any prospective purchaser or lessee is advised to obtain verification from their surveyor or solicitor. 2. The particulars are set out as a general outline only for the guidance of the intended purchasers or lessees and do not constitute, nor constitute part of, an offer or contract. 3. All descriptions, reference to condition and necessary permissions for use and occupation and other details are given in good faith and are believed to be correct but any intending purchasers or lessees should not rely on them as statements or representation of fact but satisfy themselves by inspection or otherwise as to the correctness of each of them. 4. No person in the employment of Cooper Green Pooks has any authority to make or give any representation or warranty whatsoever in relation to this property. 5. All rentals and prices are quoted exclusive of Stamp Duty, legal and surveyors fees and any other associated purchasers or lessees costs. 6. Floor plans are indicative only and should not be relied on. 7. The plan showing the boundary of the property is indicative only and has not been checked against the legal title so should not be relied on. 8. All dimensions, floor areas and site areas are only approximate and should not be relied on. Dimensions are generally maximum room dimension.