



**47 Beddow Close, Shrewsbury SY1 2NX**

4 bedroom semi-detached house—£289,950 Freehold

# 47 Beddow Close, Shrewsbury SY1 2NX

Coopergreenpooks.co.uk

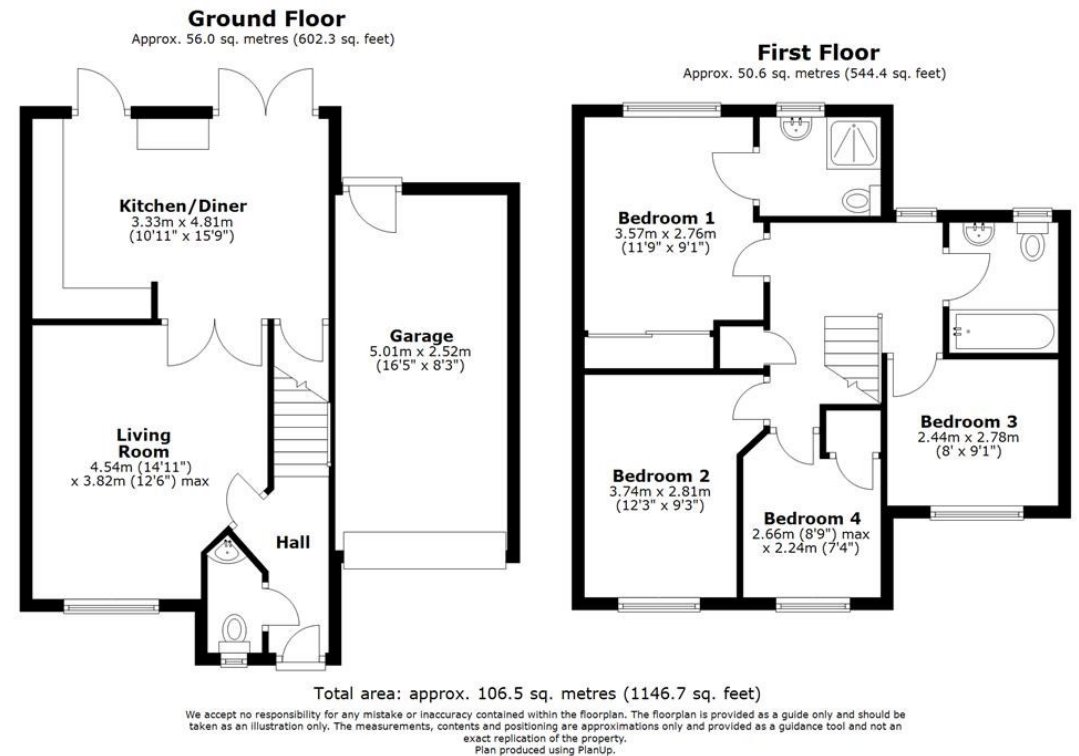
£289,950 Freehold—4 bedroom semi-detached house

sales@cgpooks.co.uk

This modern semi-detached house provides spacious and improved accommodation with a private south facing rear garden, whilst being in a great location just a few minutes' walk from the train station and town centre.

## KEY FEATURES

- Entrance hall with cloakroom.
- Good sized living room with window to front and glazed paneled double doors to dining area.
- Lovely open plan kitchen/dining room with a stylish range of re fitted units, tiled flooring and both double and single doors opening to rear garden.
- Staircase from hall to landing, where there are 4 bedrooms (3 doubles) and a family bathroom. In addition to which the main bedroom has a re fitted en suite shower room.
- Double glazed windows and gas fired central heating.
- Driveway providing parking and access to an adjoining single garage, which has been partly converted into an additional room and also has plumbing connections for washing machine and door to rear garden.
- Mediterranean style south facing rear garden with a large, decked sun terrace and pergola.
- Well situated in a quite modern cul de sac, next to a small park and just a short walk from the town centre.







## 47 Beddow Close, Shrewsbury SY1 2NX

£289,950 Freehold—4 bedroom semi-detached house  
sales@cgpooks.co.uk

Coopergreenpooks.co.uk



Cooper Green Pooks  
3 Barker Street  
Shrewsbury  
SY1 1QF

www.cgpooks.co.uk  
sales@cgpooks.co.uk  
01743 276666



# 47 Beddow Close, Shrewsbury SY1 2NX

£289,950 Freehold—4 bedroom semi-detached house  
sales@cgpooks.co.uk



**BOUNDARIES NOT CONFIRMED**

Tenure	<b>Freehold</b>
Local Authority	<b>Shropshire Council</b>
Council Tax	<b>Band C</b>
EPC Band	<b>Band D</b>
Services	<b>All mains services are connected</b>

**Expert mortgage advice available**

3 Barker St, Shrewsbury SY1 1QF  
**Cooper Green Pooks**  
**01743 276666**



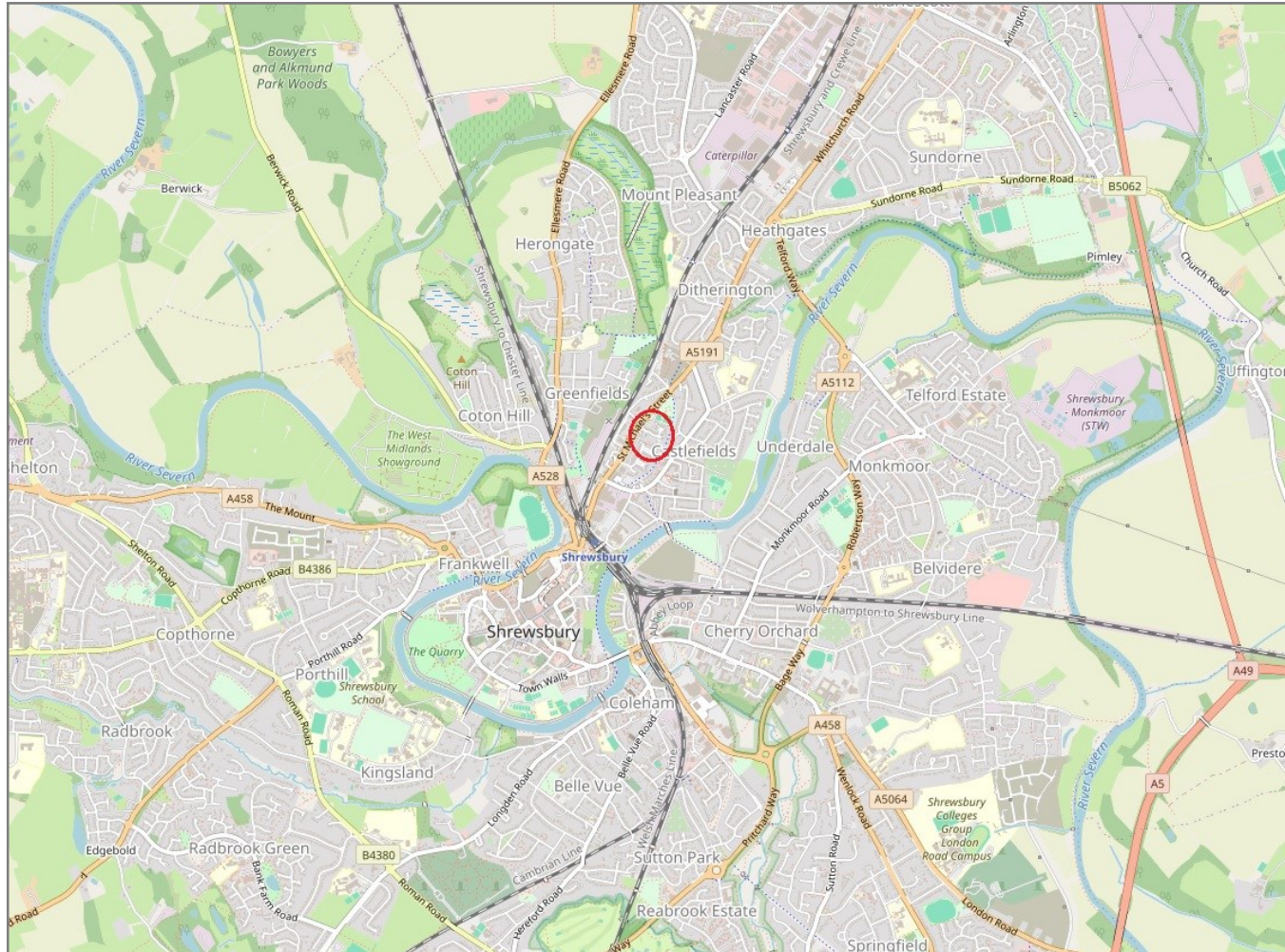
Your home may be repossessed if you do not keep up repayments on your mortgage.  
There may be a fee for mortgage advice. The actual amount you pay will depend upon your circumstances. The fee is up to 1% but a typical fee is 0.3% of the amount borrowed.

# 47 Beddow Close, Shrewsbury SY1 2NX

Coopergreenpooks.co.uk

£289,950 Freehold—4 bedroom semi-detached house

sales@cgpooks.co.uk



**IMPORTANT NOTICE:** Cooper Green Pooks for themselves and for the lessors or vendors of this property whose agents they are give notice that: 1 No appliances, services or service installations have been tested and no warranty as to suitability or serviceability is implied. Any prospective purchaser or lessee is advised to obtain verification from their surveyor or solicitor. 2. The particulars are set out as a general outline only for the guidance of the intended purchasers or lessees and do not constitute, nor constitute part of, an offer or contract. 3. All descriptions, reference to condition and necessary permissions for use and occupation and other details are given in good faith and are believed to be correct but any intending purchasers or lessees should not rely on them as statements or representation of fact but satisfy themselves by inspection or otherwise as to the correctness of each of them. 4. No person in the employment of Cooper Green Pooks has any authority to make or give any representation or warranty whatsoever in relation to this property. 5. All rentals and prices are quoted exclusive of Stamp Duty, legal and surveyors fees and any other associated purchasers or lessees costs. 6. Floor plans are indicative only and should not be relied on. 7. The plan showing the boundary of the property is indicative only and has not been checked against the legal title so should not be relied on. 8. All dimensions, floor areas and site areas are only approximate and should not be relied on. Dimensions are generally maximum room dimension.