



167, Copthorne Road, Shrewsbury, SY3 8NA  
£295,000



167, Copthorne Road, Shrewsbury, SY3 8NA

**£295,000**

This very well maintained and attractively presented property offers good accommodation with a private south facing rear garden, whilst being located in the popular Copthorne area, within the walking distance of the town center, quarry park and local schools.

## Description

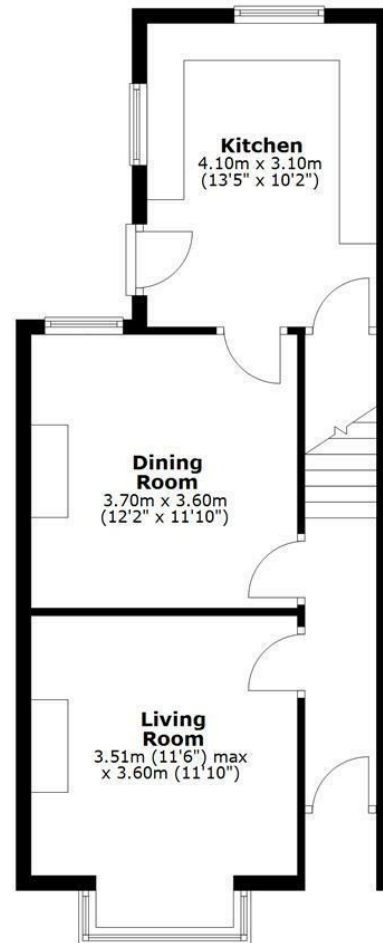


null  
Council Tax Band: B  
Available:  
EPC: D

## Floor Plans

### Ground Floor

Approx. 47.8 sq. metres (514.4 sq. feet)



### First Floor

Approx. 47.1 sq. metres (507.4 sq. feet)



Total area: approx. 94.9 sq. metres (1021.8 sq. feet)

We accept no responsibility for any mistake or inaccuracy contained within the floorplan. The floorplan is provided as a guide only and should be taken as an illustration only. The measurements, contents and positioning are approximations only and provided as a guidance tool and not an exact replication of the property.  
Plan produced using PlanUp.

These particulars, whilst believed to be accurate are set out as a general outline only for guidance and do not constitute any part of an offer or contract. Intending purchasers should not rely on them as statements of representation of fact, but must satisfy themselves by inspection or otherwise as to their accuracy. No person in this firm's employment has the authority to make or give any representation or warranty in respect of the property.