



**1 Thorns Grove, Bicton Heath, Shrewsbury SY3 5BY**

3 bedroom detached bungalow—£Freehold

# 1 Thorns Grove, Bicton Heath, Shrewsbury SY3 5BY

Coopergreenpooks.co.uk

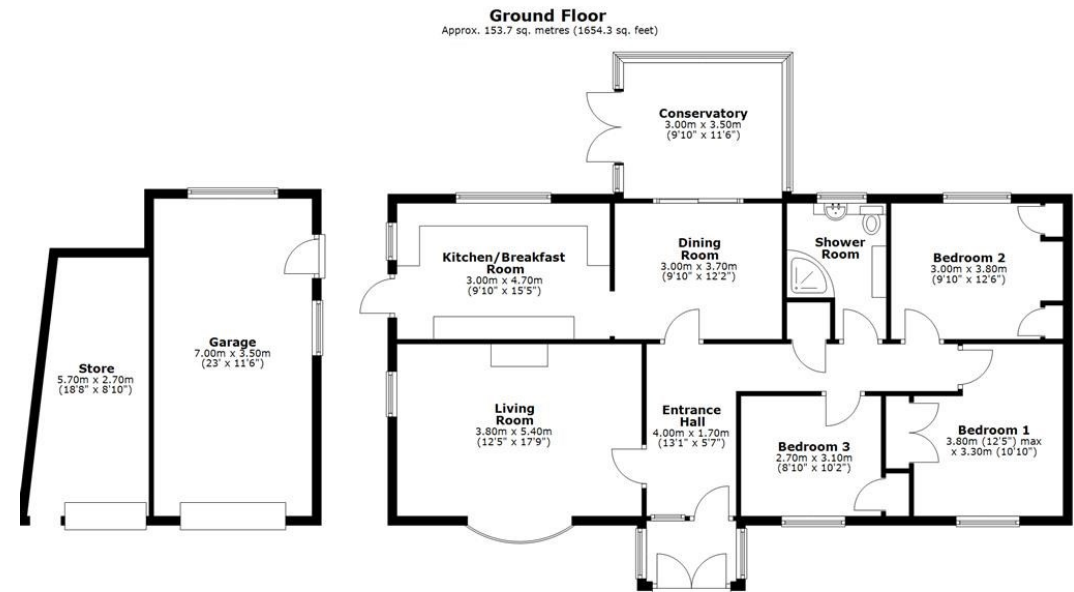
£375,000 Freehold—3 bedroom detached bungalow

sales@cgpooks.co.uk

Occupying a fantastic position, tucked away at the end of a quiet cul-de-sac with a lovely outlook, this detached bungalow offers very practical and well-proportioned accommodation, situated within a good-sized plot, and benefitting from a private gated driveway, landscaped garden, large detached garage and store.

## KEY FEATURES

- Entrance porch opening to an inner hallway with useful storage
- Spacious living room with feature fireplace and bow window to front
- Separate dining room with glazed doors onto the conservatory
- Kitchen/breakfast room with a range of well-fitted units, views over the garden and access to side
- Three bedrooms, all having built in wardrobes, and a shower room with vanity unit and heated towel rail
- uPVC double glazed windows and gas fired central heating
- Impressive landscaped rear garden, partially laid to lawn with paved terraces, fishpond, planted borders and gated access to side
- Extensive block paved driveway to front providing plenty of parking. There is also a large detached garage/workshop (7.0m x 3.5m) and adjoining covered store
- The property occupies a superb position, overlooking a woodland to the front, and is conveniently located just a short distance from Bicton Heath's excellent amenities, the Royal Shrewsbury Hospital, road links via the bypass, and less than 3 miles from the town centre



Total area: approx. 153.7 sq. metres (1654.3 sq. feet)

We accept no responsibility for any mistake or inaccuracy contained within the floorplan. The floorplan is provided as a guide only and should be taken as an illustration only. The measurements, contents and positioning are approximations only and provided as a guidance tool and not an exact replication of the property. Plan produced using PlanUp.









# 1 Thorns Grove, Bicton Heath, Shrewsbury SY3 5BY

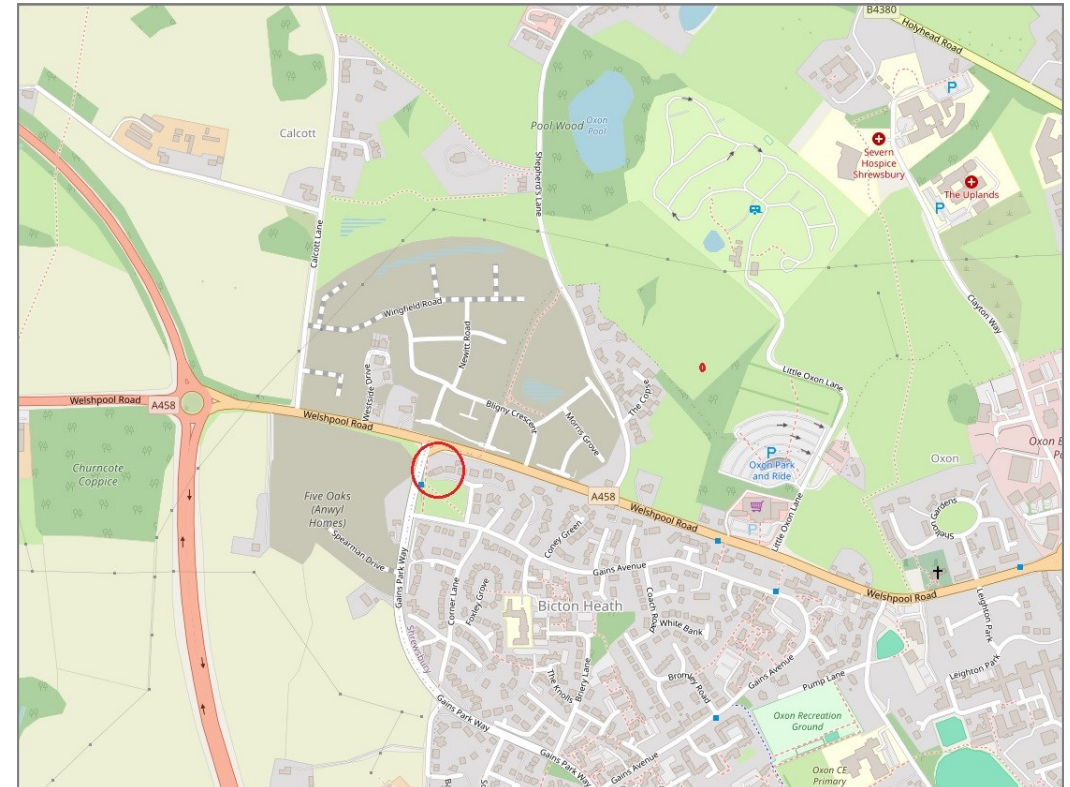
£375,000 Freehold—3 bedroom detached bungalow

sales@cgpooks.co.uk

rightmove 

 OnTheMarket.com

 **RICS**  
Regulated by RICS



**BOUNDARIES NOT CONFIRMED**

Tenure	<b>Freehold</b>
Local Authority	<b>Shropshire Council</b>
Council Tax	<b>Band D</b>
EPC Band	<b>Band C</b>
Services	<b>All mains services are connected</b>

 **Expert mortgage advice available**

3 Barker St, Shrewsbury SY1 1QF

**Cooper Green Pooks**  
**01743 276666**



Your home may be repossessed if you do not keep up repayments on your mortgage.

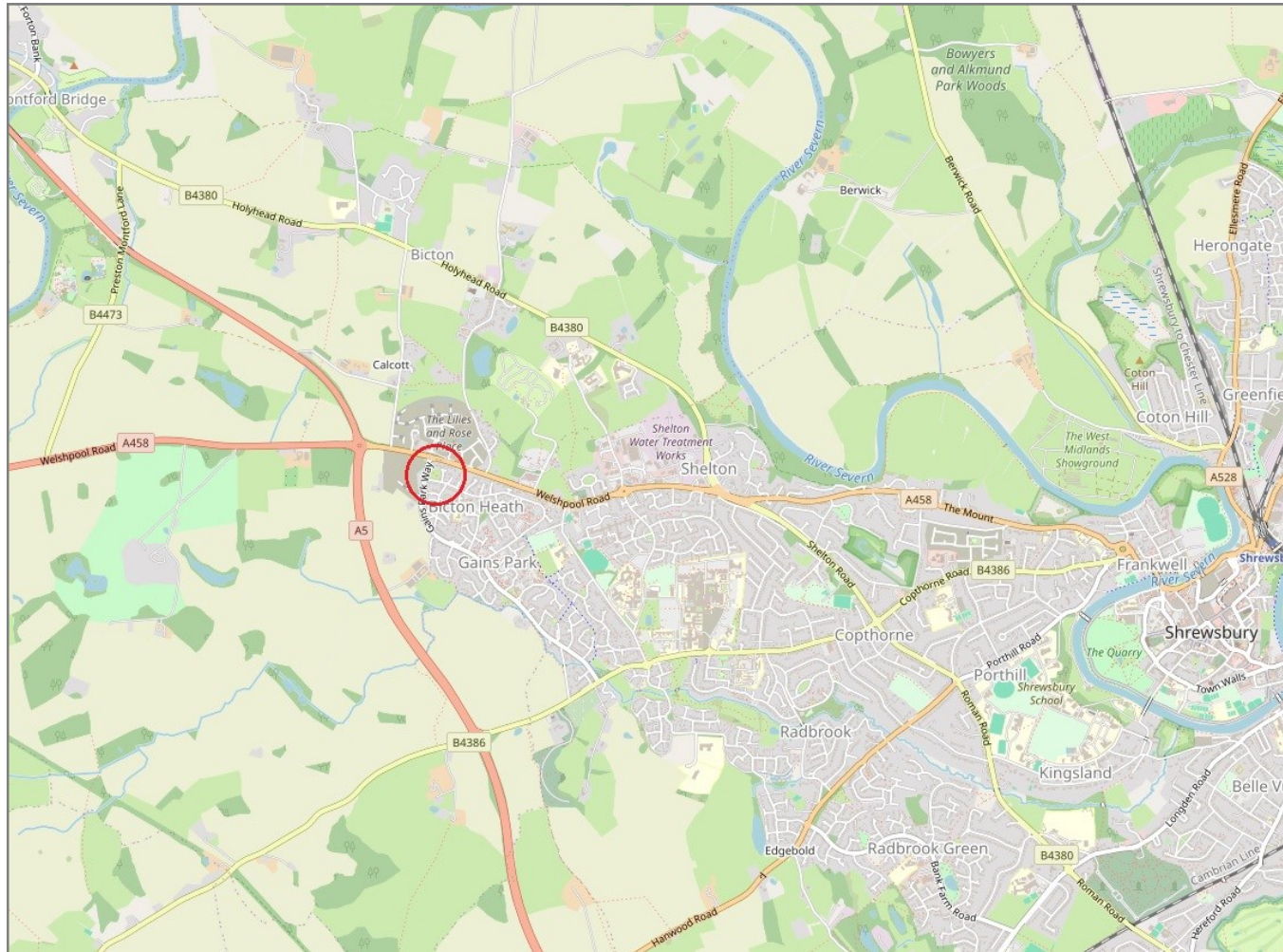
There may be a fee for mortgage advice. The actual amount you pay will depend upon your circumstances. The fee is up to 1% but a typical fee is 0.3% of the amount borrowed.

# 1 Thorns Grove, Bicton Heath, Shrewsbury SY3 5BY

Coopergreenpooks.co.uk

£375,000 Freehold—3 bedroom detached bungalow

sales@cgpooks.co.uk



**IMPORTANT NOTICE:** Cooper Green Pooks for themselves and for the lessors or vendors of this property whose agents they are give notice that: 1 No appliances, services or service installations have been tested and no warranty as to suitability or serviceability is implied. Any prospective purchaser or lessee is advised to obtain verification from their surveyor or solicitor. 2. The particulars are set out as a general outline only for the guidance of the intended purchasers or lessees and do not constitute, nor constitute part of, an offer or contract. 3. All descriptions, reference to condition and necessary permissions for use and occupation and other details are given in good faith and are believed to be correct but any intending purchasers or lessees should not rely on them as statements or representation of fact but satisfy themselves by inspection or otherwise as to the correctness of each of them. 4. No person in the employment of Cooper Green Pooks has any authority to make or give any representation or warranty whatsoever in relation to this property. 5. All rentals and prices are quoted exclusive of Stamp Duty, legal and surveyors fees and any other associated purchasers or lessees costs. 6. Floor plans are indicative only and should not be relied on. 7. The plan showing the boundary of the property is indicative only and has not been checked against the legal title so should not be relied on. 8. All dimensions, floor areas and site areas are only approximate and should not be relied on. Dimensions are generally maximum room dimension.