



10 Griffiths Close, Shrewsbury SY2 6FZ

3 bedroom semi-detached house—£279,995 Freehold

10 Griffiths Close, Shrewsbury SY2 6FZ

Coopergreenpooks.co.uk

£279,995 Freehold—3 bedroom semi-detached house

sales@cgpooks.co.uk

Occupying a lovely position with a pleasant outlook, this recently built semi-detached house offers well-designed accommodation, while benefitting from a private rear garden and driveway parking for two cars.

KEY FEATURES

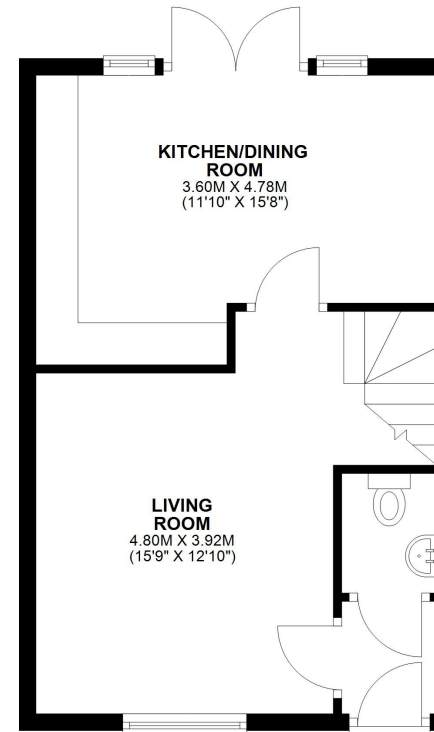
- Entrance hall with cloakroom, opening to a good-sized living room with views to front
- Impressive open plan kitchen/dining room, complete with integrated appliances and glazed double doors to the rear garden
- Master bedroom with built in storage and en-suite shower room
- Two further bedrooms and a well-appointed family bathroom
- Views from the first floor over the play area and green open space
- uPVC double glazed windows and gas fired central heating
- Private rear garden, laid to lawn with paved sun terrace and gated access to side
- Driveway parking for at least two cars
- A great location, tucked away within a quiet cul-de-sac, within a recently build development, close to Meole Brace golf course and open countryside, as well as Ballantyne's health club, the excellent Meole Brace retail park and Shrewsbury Town football stadium. The town centre is also less than two miles away
- Sold with no upward chain

Cooper Green Pooks
3 Barker Street
Shrewsbury
SY1 1QF

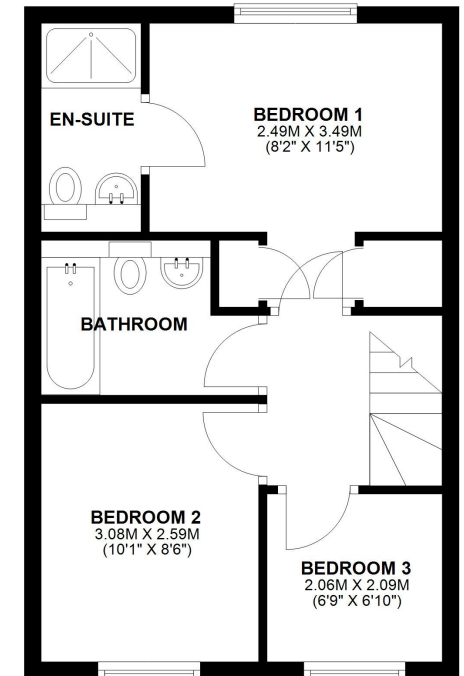
www.cgpooks.co.uk
sales@cgpooks.co.uk
01743 276666



GROUND FLOOR
APPROX. 36.0 SQ. METRES (387.6 SQ. FEET)



FIRST FLOOR
APPROX. 36.4 SQ. METRES (391.3 SQ. FEET)



TOTAL AREA: APPROX. 72.4 SQ. METRES (778.9 SQ. FEET)

We accept no responsibility for any mistake or inaccuracy contained within the floorplan. The floorplan is provided as a guide only and should be taken as an illustration only. The measurements, contents and positioning are approximations only and provided as a guidance tool and not an exact replication of the property.
Plan produced using PlanUp.







10 Griffiths Close, Shrewsbury SY2 6FZ

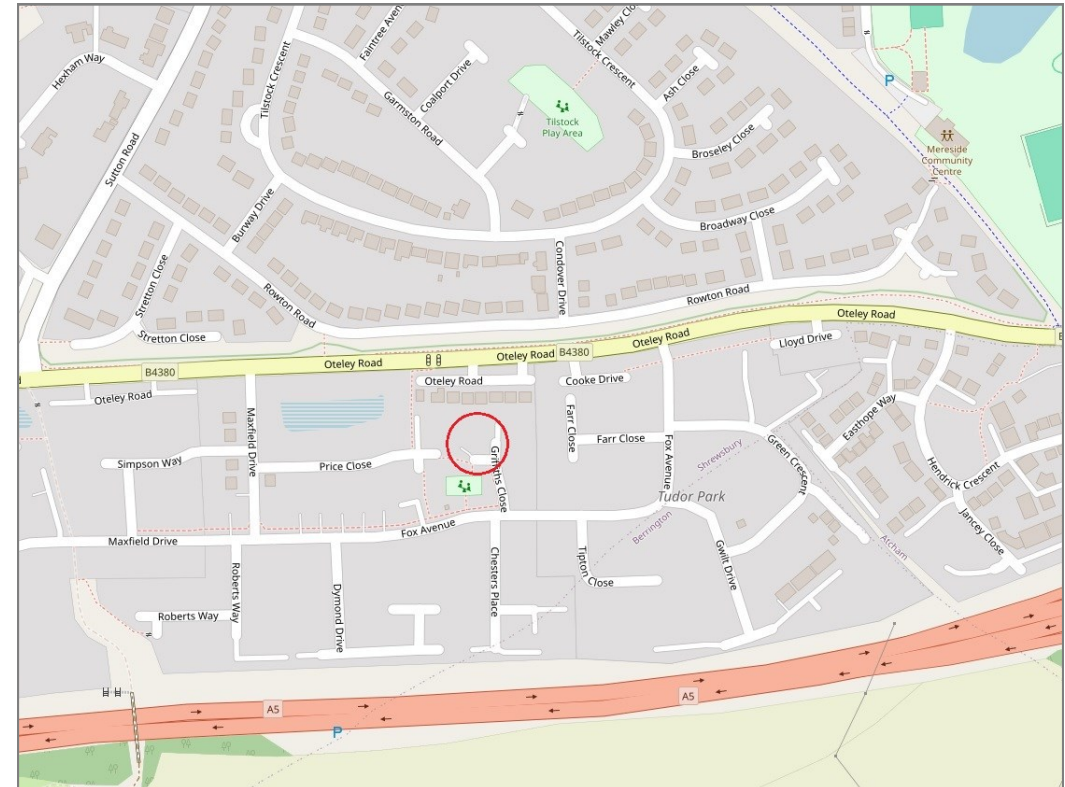
£279,995 Freehold—3 bedroom semi-detached house

sales@cgpooks.co.uk

rightmove 

 OnTheMarket.com

 **RICS**
Regulated by RICS



BOUNDARIES NOT CONFIRMED

| | |
|-----------------|---|
| Tenure | Freehold |
| Local Authority | Shropshire Council |
| Council Tax | Band C |
| EPC Band | Band B |
| Services | All mains services are connected |

 **Expert mortgage advice available**

3 Barker St, Shrewsbury SY1 1QF

Cooper Green Pooks
01743 276666



Your home may be repossessed if you do not keep up repayments on your mortgage.

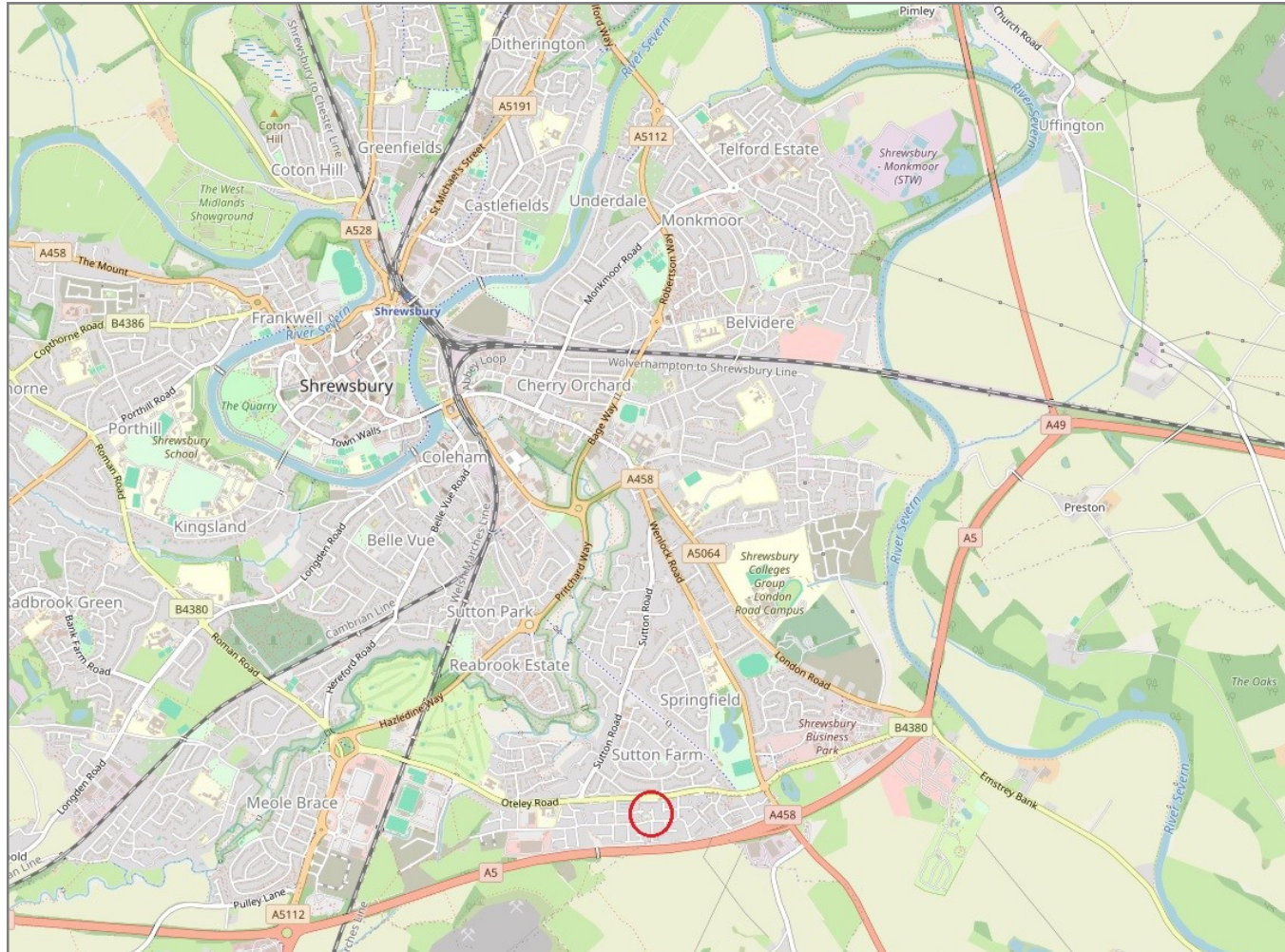
There may be a fee for mortgage advice. The actual amount you pay will depend upon your circumstances. The fee is up to 1% but a typical fee is 0.3% of the amount borrowed.

10 Griffiths Close, Shrewsbury SY2 6FZ

Coopergreenpooks.co.uk

£279,995 Freehold—3 bedroom semi-detached house

sales@cgpooks.co.uk



IMPORTANT NOTICE: Cooper Green Pooks for themselves and for the lessors or vendors of this property whose agents they are give notice that: 1 No appliances, services or service installations have been tested and no warranty as to suitability or serviceability is implied. Any prospective purchaser or lessee is advised to obtain verification from their surveyor or solicitor. 2. The particulars are set out as a general outline only for the guidance of the intended purchasers or lessees and do not constitute, nor constitute part of, an offer or contract. 3. All descriptions, reference to condition and necessary permissions for use and occupation and other details are given in good faith and are believed to be correct but any intending purchasers or lessees should not rely on them as statements or representation of fact but satisfy themselves by inspection or otherwise as to the correctness of each of them. 4. No person in the employment of Cooper Green Pooks has any authority to make or give any representation or warranty whatsoever in relation to this property. 5. All rentals and prices are quoted exclusive of Stamp Duty, legal and surveyors fees and any other associated purchasers or lessees costs. 6. Floor plans are indicative only and should not be relied on. 7. The plan showing the boundary of the property is indicative only and has not been checked against the legal title so should not be relied on. 8. All dimensions, floor areas and site areas are only approximate and should not be relied on. Dimensions are generally maximum room dimension.