

**COOPER
GREEN
POOKS**

LET BY

112, Mount Pleasant Road, Mount Pleasant, Shrewsbury, SY1 3EP
£900 Per Month



112, Mount Pleasant Road, Mount Pleasant, Shrewsbury, SY1 3EP

£900 Per Month

VIRTUAL TOUR AVAILABLE - Well maintained three bedroom semi-detached house with modern kitchen in a popular residential area of Shrewsbury close to local amenities and good road links.

Available from: 24/10/24

Description

Comprising: Entrance hall, living room with double doors to dining room with sliding doors to rear, kitchen including oven & hob, understairs cupboard. Stairs to first floor landing with cupboard, shower room, two large double bedrooms, single bedroom. Gas central heating, double glazing. Ample driveway parking. Garage NOT included. EPC C



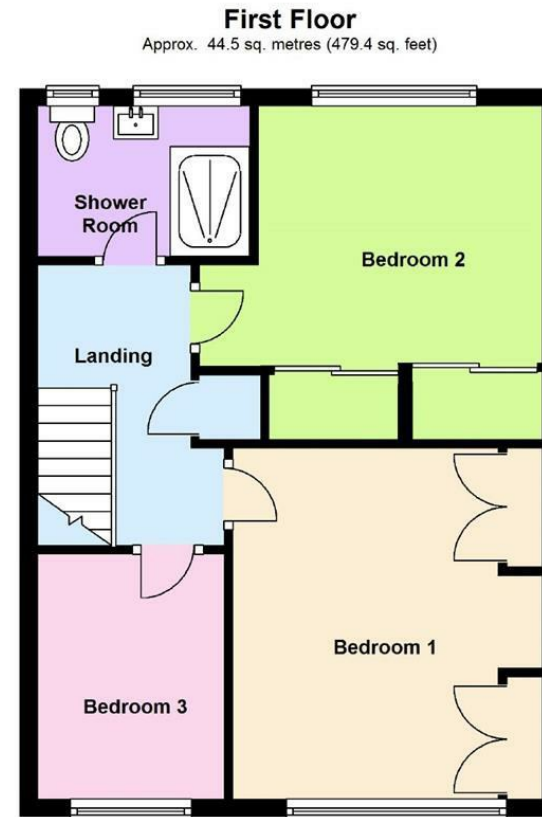
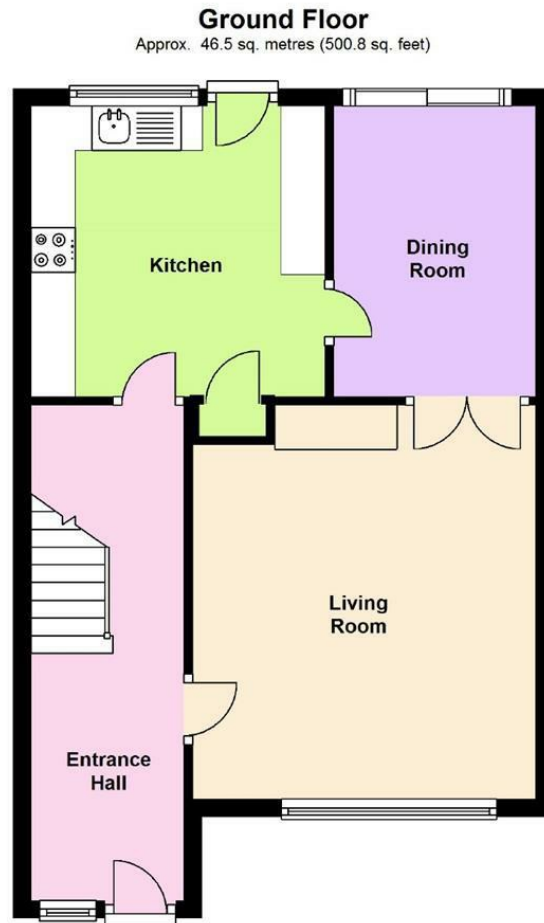
Unfurnished

Council Tax Band: C

Available: 24th October 2024

EPC: C

Floor Plans



Total area: approx. 91.1 sq. metres (980.2 sq. feet)

We accept no responsibility for any mistake or inaccuracy contained within the floorplan. The floorplan is provided as a guide only and should be taken as an illustration only. The measurements, contents and positioning are approximations only and provided as a guidance tool and not an exact replication of the property.

Plan produced using PlanUp.

These particulars, whilst believed to be accurate are set out as a general outline only for guidance and do not constitute any part of an offer or contract. Intending purchasers should not rely on them as statements of representation of fact, but must satisfy themselves by inspection or otherwise as to their accuracy. No person in this firm's employment has the authority to make or give any representation or warranty in respect of the property.