



17 Oliver Road, Leighton Park, Shrewsbury, SY3 5FX

1 bedroom ground floor apartment — £189,950 Leasehold

17 Oliver Road, Leighton Park, Shrewsbury, SY3 5FX

Coopergreenpooks.co.uk

£189,950 Leasehold—1 bedroom ground floor apartment

sales@cgpooks.co.uk

This individually designed ground floor apartment offers stylish and well-proportioned accommodation, finished to a high standard throughout, while benefitting from a private courtyard garden and allocated parking.

KEY FEATURES

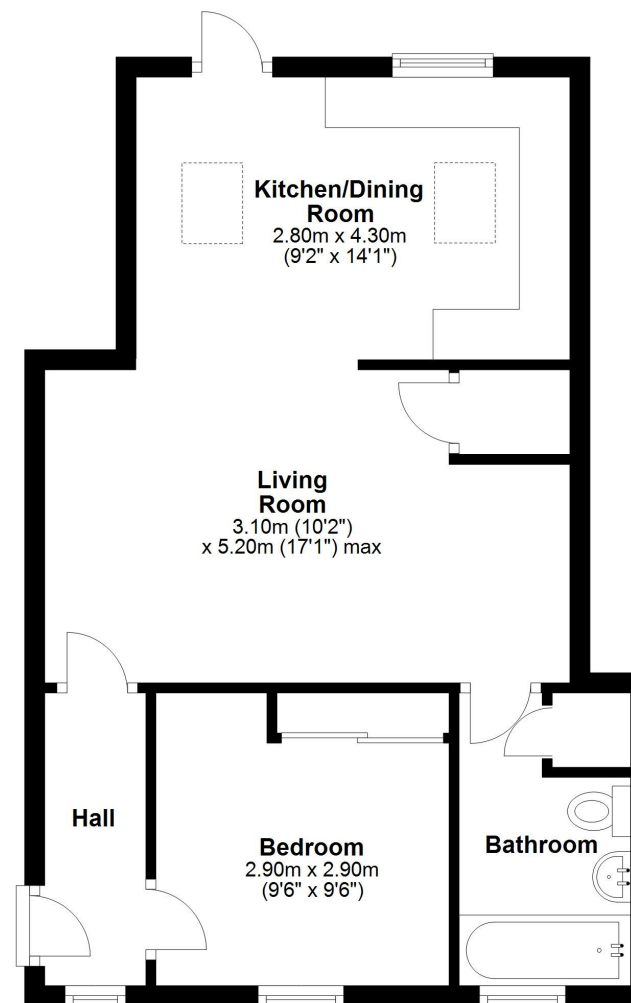
- Lovely open plan kitchen/dining room with velux roof lights and glazed door onto the garden
- Good sized living room, which is also open plan to the dining area
- Double bedroom with built in wardrobes
- Separate well-appointed bathroom with shower
- Double glazed windows and electric heating
- Private low maintenance courtyard garden, enclosed by wrought iron railings
- Allocated parking as well as additional visitor spaces
- A fantastic position within a peaceful and well-designed development, set in the extensive and well-kept private grounds of the former Shelton hospital, which was recently converted by Shropshire homes
- Located a short walk from the impressive Shelton cricket club and bowling green, as well as being just a few minutes from Bicton Heath's excellent amenities, and less than two miles from the town centre
- Sold with no upward chain

Cooper Green Pooks
3 Barker Street
Shrewsbury
SY1 1QF

www.cgpooks.co.uk
sales@cgpooks.co.uk
01743 276666



Ground Floor



We accept no responsibility for any mistake or inaccuracy contained within the floorplan. The floorplan is provided as a guide only and should be taken as an illustration only. The measurements, contents and positioning are approximations only and provided as a guidance tool and not an exact replication of the property.
Plan produced using PlanUp.







17 Oliver Road, Leighton Park, Shrewsbury, SY3 5FX

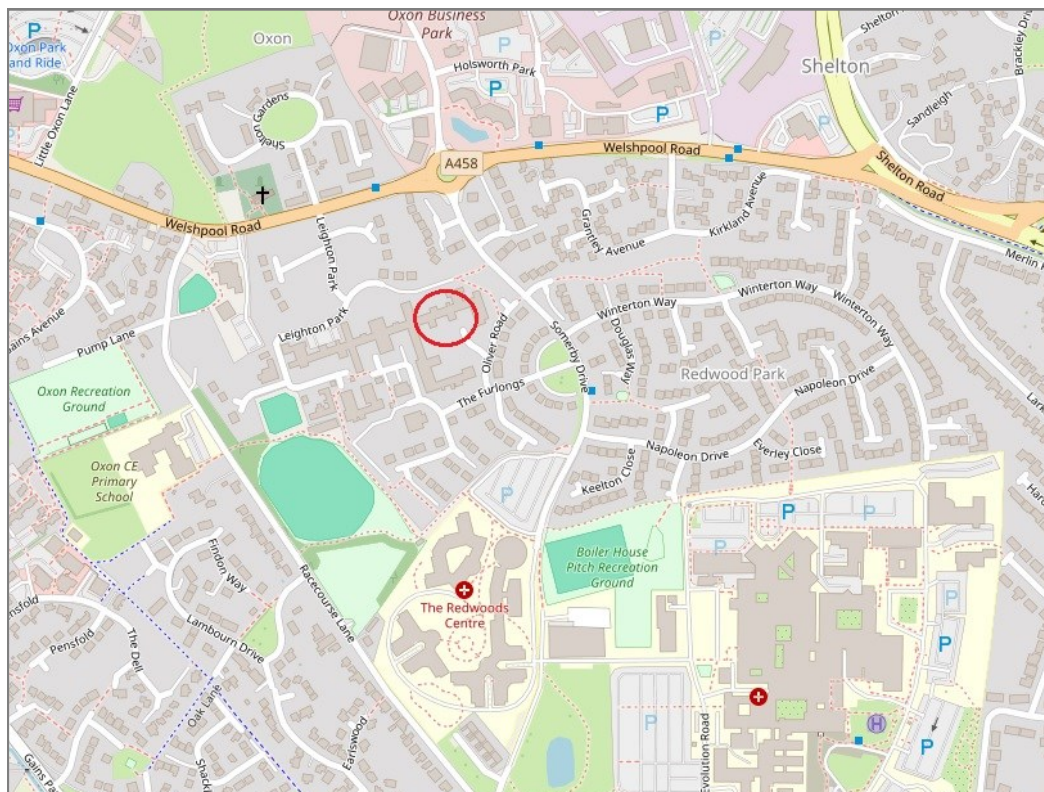
£189,950 Leasehold—1 bedroom ground floor apartment

sales@cgpooks.co.uk

rightmove

onTheMarket.com

RICS
Regulated by RICS



BOUNDARIES NOT CONFIRMED

Tenure	Leashold
Lease Length	199 years from 2016
Service Charge	£115 PCM
Ground Rent	£150 PA

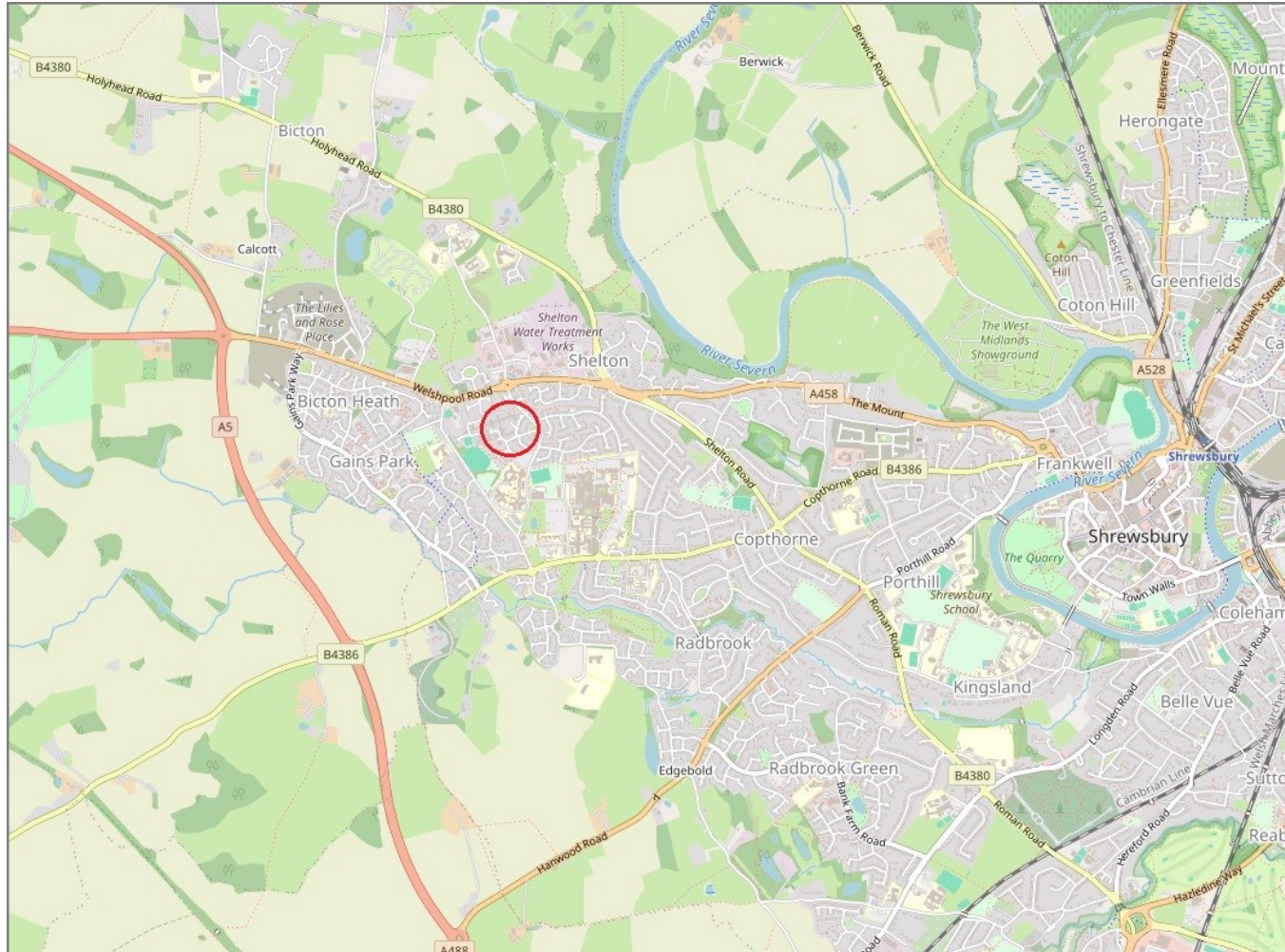
Local Authority	Shropshire Council
Council Tax	Band A
EPC Band	Band D
Services	Mains services water, electricity and drainage are connected
	Heating is electric

17 Oliver Road, Leighton Park, Shrewsbury, SY3 5FX

Coopergreenpooks.co.uk

£189,950 Leasehold—1 bedroom ground floor apartment

sales@cgpooks.co.uk



IMPORTANT NOTICE: Cooper Green Pooks for themselves and for the lessors or vendors of this property whose agents they are give notice that: 1 No appliances, services or service installations have been tested and no warranty as to suitability or serviceability is implied. Any prospective purchaser or lessee is advised to obtain verification from their surveyor or solicitor. 2. The particulars are set out as a general outline only for the guidance of the intended purchasers or lessees and do not constitute, nor constitute part of, an offer or contract. 3. All descriptions, reference to condition and necessary permissions for use and occupation and other details are given in good faith and are believed to be correct but any intending purchasers or lessees should not rely on them as statements or representation of fact but satisfy themselves by inspection or otherwise as to the correctness of each of them. 4. No person in the employment of Cooper Green Pooks has any authority to make or give any representation or warranty whatsoever in relation to this property. 5. All rentals and prices are quoted exclusive of Stamp Duty, legal and surveyors fees and any other associated purchasers or lessees costs. 6. Floor plans are indicative only and should not be relied on. 7. The plan showing the boundary of the property is indicative only and has not been checked against the legal title so should not be relied on. 8. All dimensions, floor areas and site areas are only approximate and should not be relied on. Dimensions are generally maximum room dimension.