



Apartment 408 The Cedars, Abbey Foregate, Shrewsbury, SY2 6BY

2 bedroom retirement apartment—£162,500 Leasehold

Apartment 408, The Cedars, Abbey Foregate, Shrewsbury, SY2 6BY

Coopergreenpooks.co.uk

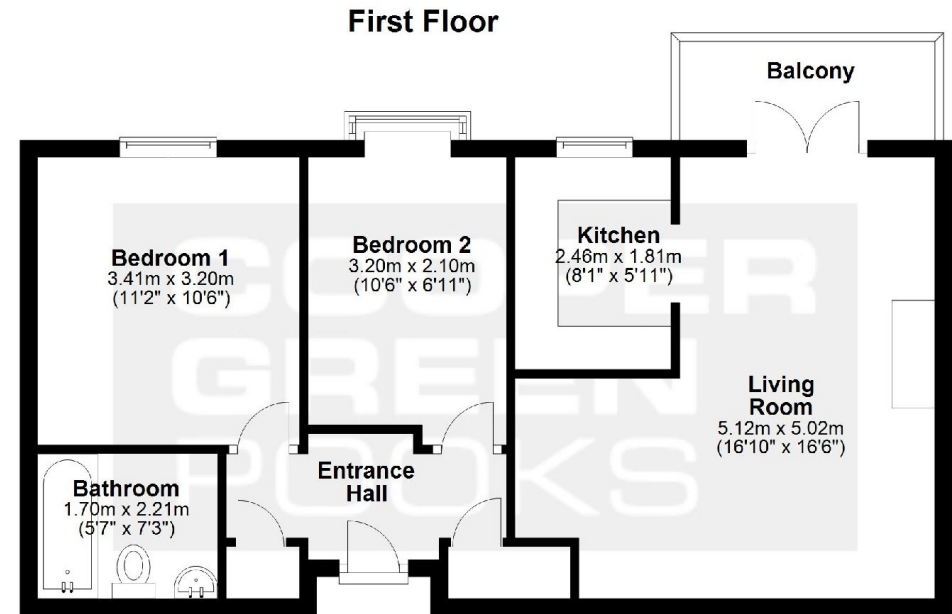
£162,500 Leasehold—2 bedroom retirement apartment

sales@cgpooks.co.uk

An immaculately presented and modernised purpose-built retirement apartment, located in a fantastic position with good sized south facing balcony, overlooking beautifully kept landscaped gardens.

KEY FEATURES

- Located on first floor (main entrance) with lift access
- Light and very well presented interior
- Entrance hall with two useful stores and entry phone system
- Living and dining room having glazed double doors to balcony from which there are lovely views
- Re-fitted kitchen with appliances
- Two bedrooms and a re-fitted shower room with double length walk-in shower
- uPVC double glazed windows and modern electric heating
- House manager from 9am and 5pm Monday/Friday, residents lounge and guest suite available
- Private car park for residents, guests and very attractive communal gardens
- A fantastic location, within walking distance of some excellent amenities and the town centre
- Sold with no upward chain



Total area: approx. 52.7 sq. metres (567.0 sq. feet)

We accept no responsibility for any mistake or inaccuracy contained within the floorplan. The floorplan is provided as a guide only and should be taken as an illustration only. The measurements, contents and positioning are approximations only and provided as a guidance tool and not an exact replication of the property.

Cooper Green Pooks
3 Barker Street
Shrewsbury
SY1 1QF

www.cgpooks.co.uk







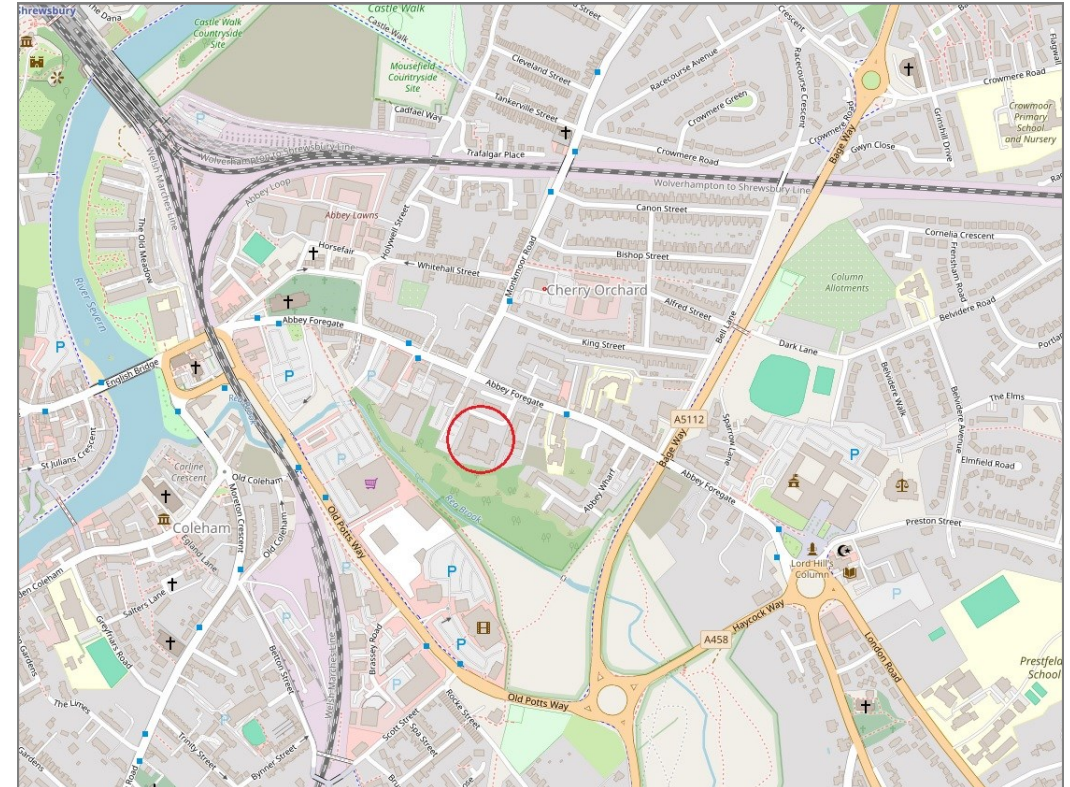
Apartment 408, The Cedars, Abbey Foregate, Shrewsbury, SY2 6BY

£162,500 Leasehold—2 bedroom retirement apartment
sales@cgpooks.co.uk

rightmove

onTheMarket.com

RICS
Regulated by RICS



BOUNDARIES NOT CONFIRMED

Tenure	Leasehold
Lease Length	199 yrs from 1990
Service Charge	Approx. £3,200 PA
Local Authority	Shropshire Council
Council Tax	Band C
EPC Band	TBC
Services	Mains electricity, water and drainage are connected

Expert mortgage advice available

3 Barker St, Shrewsbury SY1 1QF

Cooper Green Pooks
01743 276666



Your home may be repossessed if you do not keep up repayments on your mortgage.

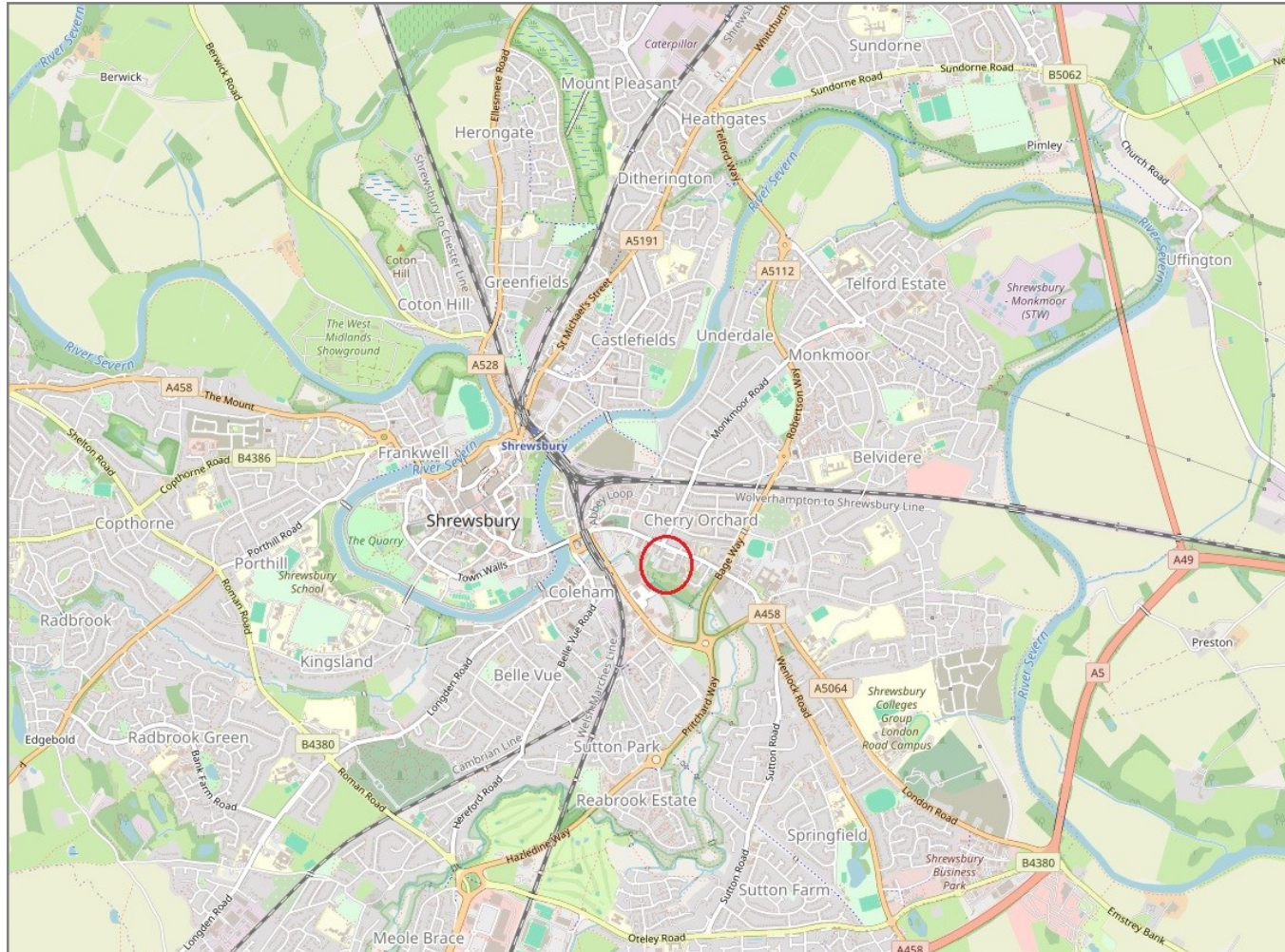
There may be a fee for mortgage advice. The actual amount you pay will depend upon your circumstances. The fee is up to 1% but a typical fee is 0.3% of the amount borrowed.

Apartment 408, The Cedars, Abbey Foregate, Shrewsbury, SY2 6BY

Coopergreenpooks.co.uk

£162,500 Leasehold—2 bedroom retirement apartment

sales@cgpooks.co.uk



IMPORTANT NOTICE: Cooper Green Pooks for themselves and for the lessors or vendors of this property whose agents they are give notice that: 1 No appliances, services or service installations have been tested and no warranty as to suitability or serviceability is implied. Any prospective purchaser or lessee is advised to obtain verification from their surveyor or solicitor. 2. The particulars are set out as a general outline only for the guidance of the intended purchasers or lessees and do not constitute, nor constitute part of, an offer or contract. 3. All descriptions, reference to condition and necessary permissions for use and occupation and other details are given in good faith and are believed to be correct but any intending purchasers or lessees should not rely on them as statements or representation of fact but satisfy themselves by inspection or otherwise as to the correctness of each of them. 4. No person in the employment of Cooper Green Pooks has any authority to make or give any representation or warranty whatsoever in relation to this property. 5. All rentals and prices are quoted exclusive of Stamp Duty, legal and surveyors fees and any other associated purchasers or lessees costs. 6. Floor plans are indicative only and should not be relied on. 7. The plan showing the boundary of the property is indicative only and has not been checked against the legal title so should not be relied on. 8. All dimensions, floor areas and site areas are only approximate and should not be relied on. Dimensions are generally maximum room dimension.