



13, Harley Road, Conover, Shrewsbury, SY5 7AX

£299,950



13, Harley Road, Conover, Shrewsbury, SY5 7AX

£299,950

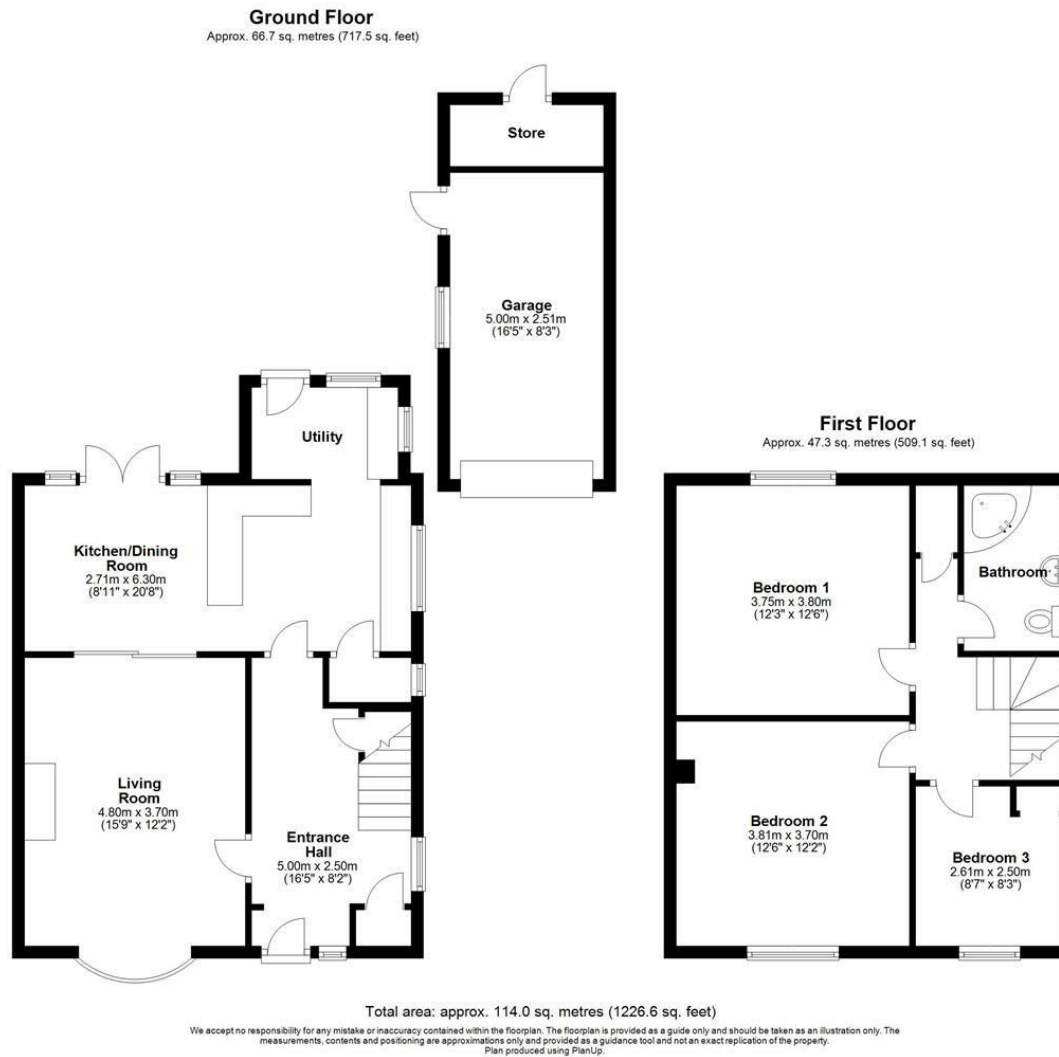
Occupying a lovely position within a popular village, this well-presented and improved semi-detached house offers thoughtfully designed accommodation, while benefitting from a landscaped rear garden, extensive driveway and detached garage.

Description



null
Council Tax Band: C
Available:
EPC: D

Floor Plans



These particulars, whilst believed to be accurate are set out as a general outline only for guidance and do not constitute any part of an offer or contract. Intending purchasers should not rely on them as statements of representation of fact, but must satisfy themselves by inspection or otherwise as to their accuracy. No person in this firm's employment has the authority to make or give any representation or warranty in respect of the property.