



26, Cleveland Street, Cherry Orchard, Shrewsbury, SY2 5DN
£950 Per Month



26, Cleveland Street, Cherry Orchard, Shrewsbury, SY2 5DN

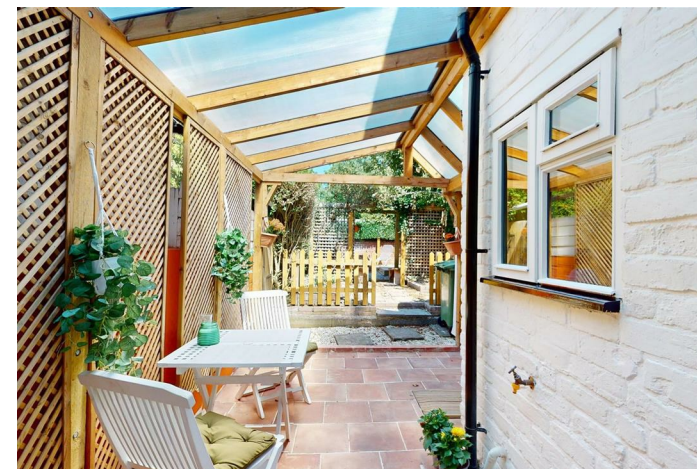
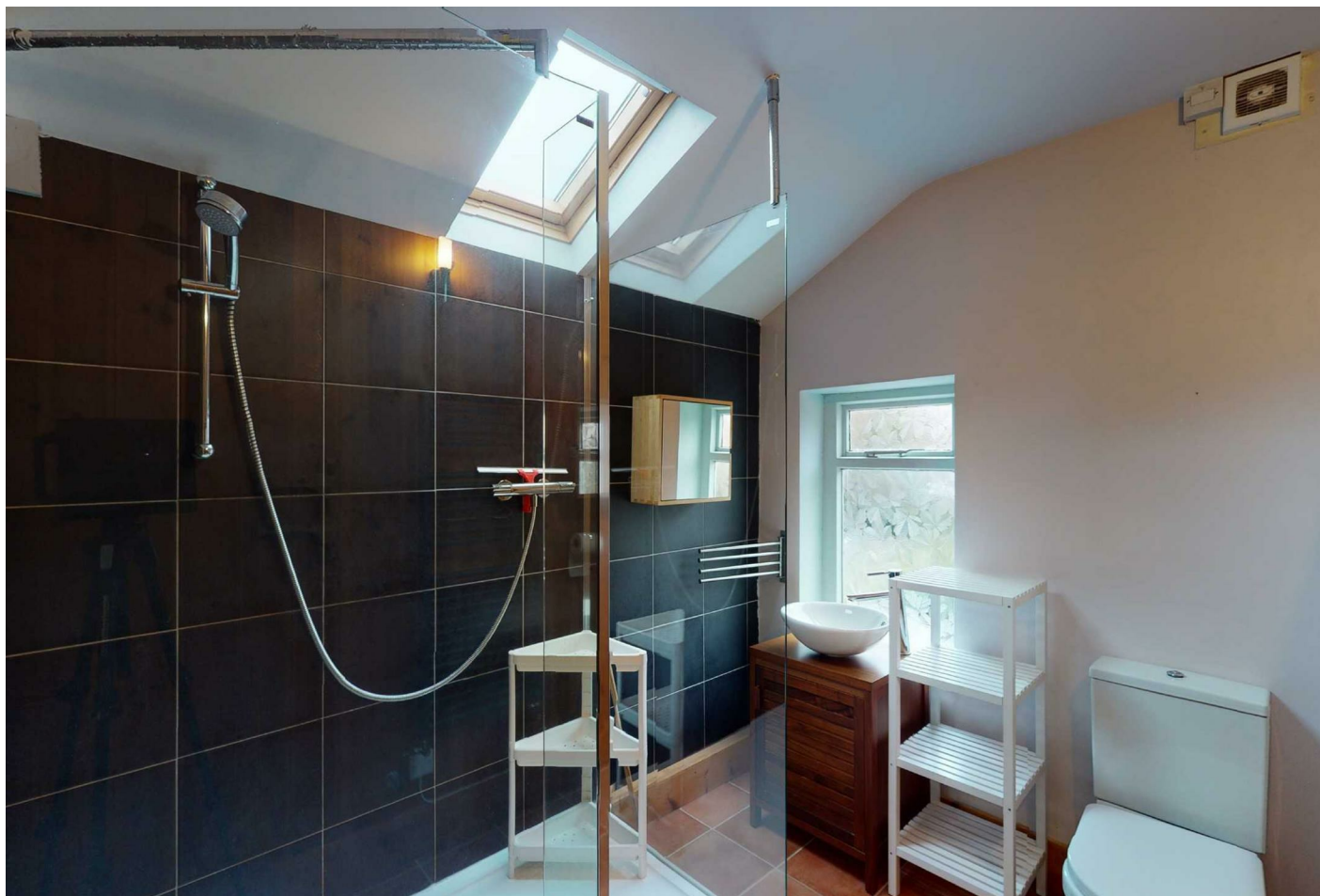
£950 Per Month

VIRTUAL TOUR AVAILABLE - Charming, well maintained two bedroom mid terraced house in a popular residential area to the east of Shrewsbury town centre. A wide range of amenities and excellent road links are within easy reach.

Available: 13/08/24

Description

Comprising: Entrance hall, living room with open fire, dining room with understairs storage, log log burner and double doors to rear, galley kitchen including oven, hob and dishwasher, downstairs WC. Upstairs to master bedroom including ensuite shower room, further double bedroom. Attractive front and rear gardens including raised decking and covered terrace. EPC D



Unfurnished

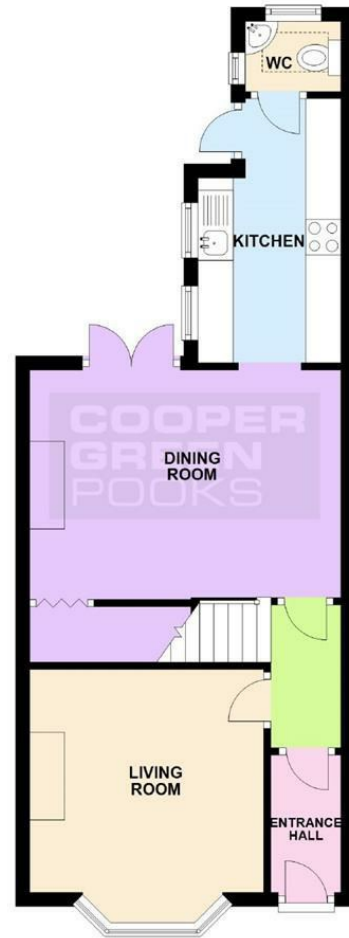
Council Tax Band: B

Available: 13th August 2024

EPC: D

Floor Plans

GROUND FLOOR
APPROX. 42.0 SQ. METRES (451.6 SQ. FEET)



FIRST FLOOR
APPROX. 38.8 SQ. METRES (417.9 SQ. FEET)



TOTAL AREA: APPROX. 80.8 SQ. METRES (869.5 SQ. FEET)

We accept no responsibility for any mistake or inaccuracy contained within the floorplan. The floorplan is provided as a guide only and should be taken as an illustration only. The measurements, contents and positioning are approximations only and provided as a guidance tool and not an exact replication of the property.
Plan produced using PlanUp.

These particulars, whilst believed to be accurate are set out as a general outline only for guidance and do not constitute any part of an offer or contract. Intending purchasers should not rely on them as statements of representation of fact, but must satisfy themselves by inspection or otherwise as to their accuracy. No person in this firm's employment has the authority to make or give any representation or warranty in respect of the property.