



Flat 3, Plume Flats, 8, Dogpole, Shrewsbury, SY1 1EN
£495 Per Month



Flat 3, Plume Flats, 8, Dogpole, Shrewsbury, SY1 1EN

£495 Per Month

VIRTUAL TOUR AVAILABLE - Modernised second floor studio apartment in the heart of Shrewsbury town centre.

Available: Immediately

Description

Comprising: Communal entrance, stairs to second floor, entrance hall, bed/sitting room, modern kitchen including oven & hob & space for washing machine, modern bathroom incl shower. EPC D

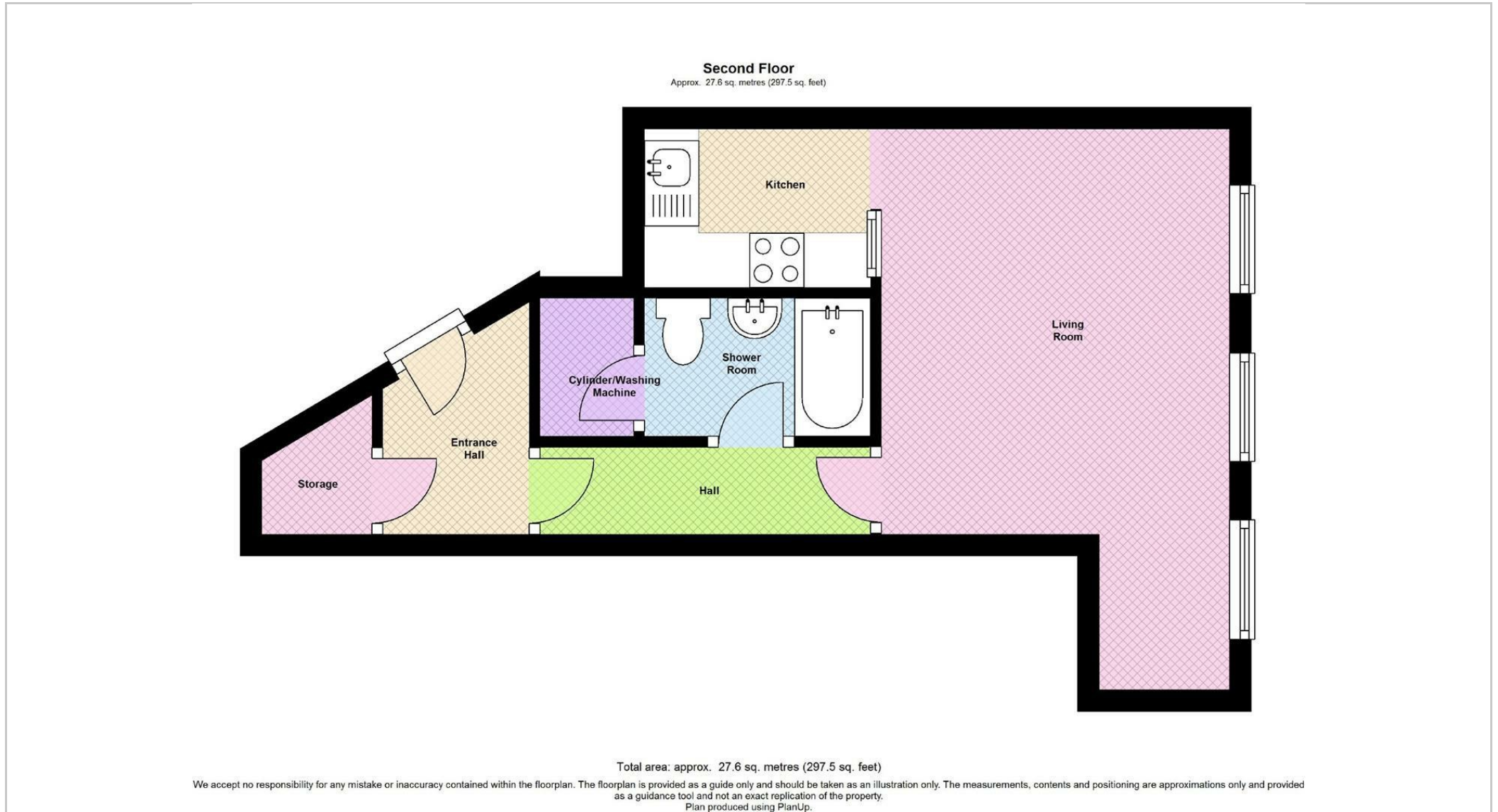
Unfurnished

Council Tax Band: A

Available: 29th July 2024

EPC: D

Floor Plans



These particulars, whilst believed to be accurate are set out as a general outline only for guidance and do not constitute any part of an offer or contract. Intending purchasers should not rely on them as statements of representation of fact, but must satisfy themselves by inspection or otherwise as to their accuracy. No person in this firm's employment has the authority to make or give any representation or warranty in respect of the property.