



Springfield, Church Road, Baschurch, Shrewsbury, SY4 2EG

£1,100 Per Month



Springfield, Church Road, Baschurch, Shrewsbury, SY4 2EG

£1,100 Per Month

Occupying a lovely position in the village of Baschurch with fantastic views over surrounding fields, this detached 3 bedroom bungalow offers neatly presented and practical accommodation, benefitting from a beautiful private rear garden, gated driveway and a detached garage.

AVAILABLE: 25/09/24

Description

Comprising: Good sized entrance hall with useful storage, living/dining room with feature fireplace and glazed double doors opening to rear, fitted kitchen with integrated double oven and hob, access to the separate utility and garden, three bedrooms, the third bedroom would make a great study, a family bathroom and additional shower room. uPVC double glazed windows and gas fired central heating. Attractive private rear garden, laid to lawn with paved terrace and well-stocked borders. Gated driveway to front providing plenty of parking and access to the detached single garage. A superb location, just a short walk from the village supermarket, pubs/restaurants, doctors' surgery and schools, while being just a 15 minute drive from Shrewsbury town centre. EPC D



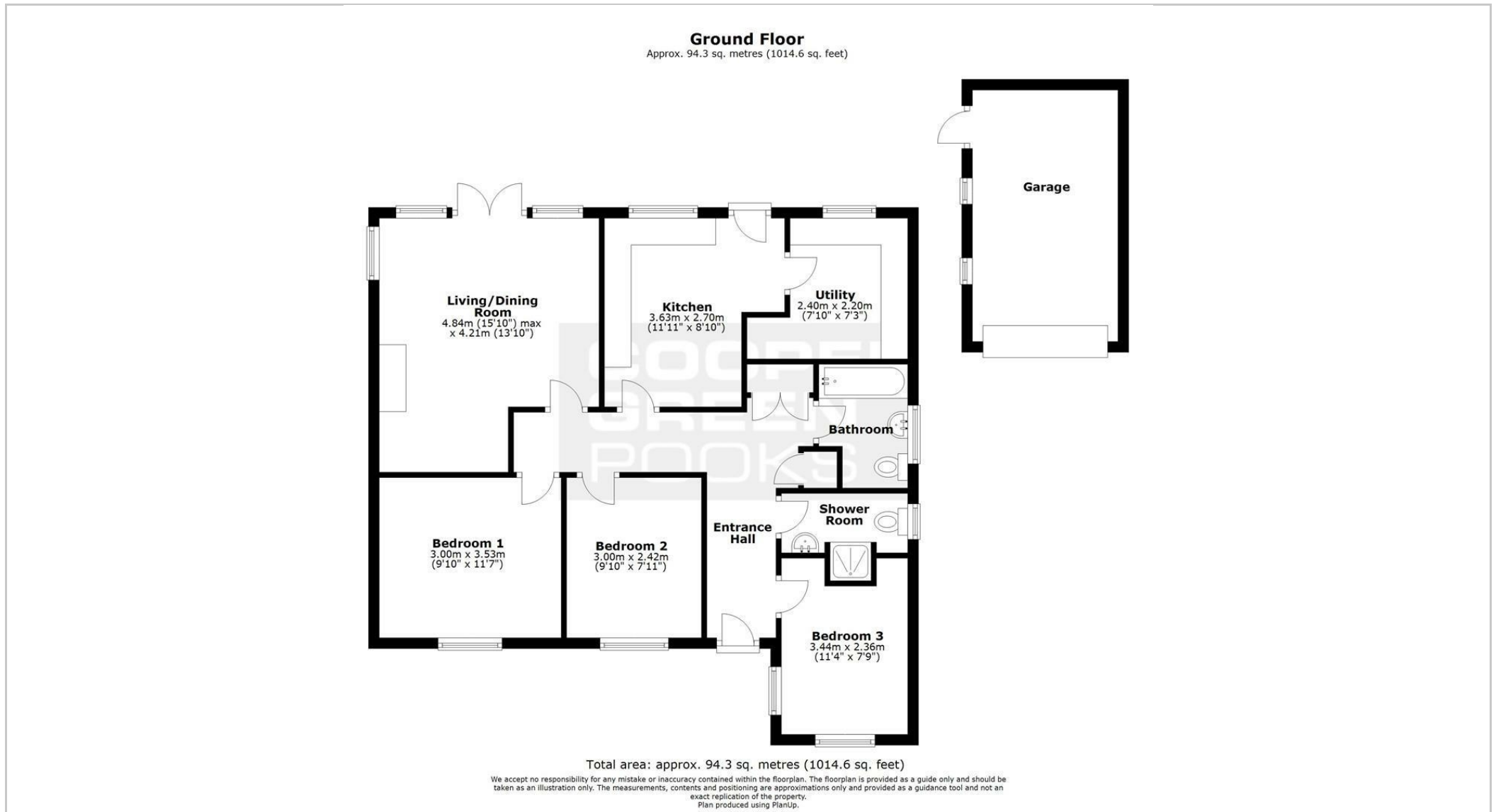
Unfurnished

Council Tax Band: D

Available: 25th September 2024

EPC: D

Floor Plans



These particulars, whilst believed to be accurate are set out as a general outline only for guidance and do not constitute any part of an offer or contract. Intending purchasers should not rely on them as statements of representation of fact, but must satisfy themselves by inspection or otherwise as to their accuracy. No person in this firm's employment has the authority to make or give any representation or warranty in respect of the property.