



**Flat 2, London House, Town Walls, Shrewsbury, SY1 1TX**  
£750 Per Month



Flat 2, London House, Town Walls, Shrewsbury, SY1 1TX

**£750 Per Month**

VIRTUAL TOUR AVAILABLE - Attractive third floor one bedroom flat in Shrewsbury town centre with the benefit of allocated off front parking to the front of the property.

Available: 30/08/24

## Description

Comprising: Communal entrance hall with stairs leading to flat. Hall, shower room including utility area with washing machine, kitchen including oven & hob, fridge/freezer, spacious living room, double bedroom. Blinds and double glazed windows throughout. Allocated parking space. EPC E

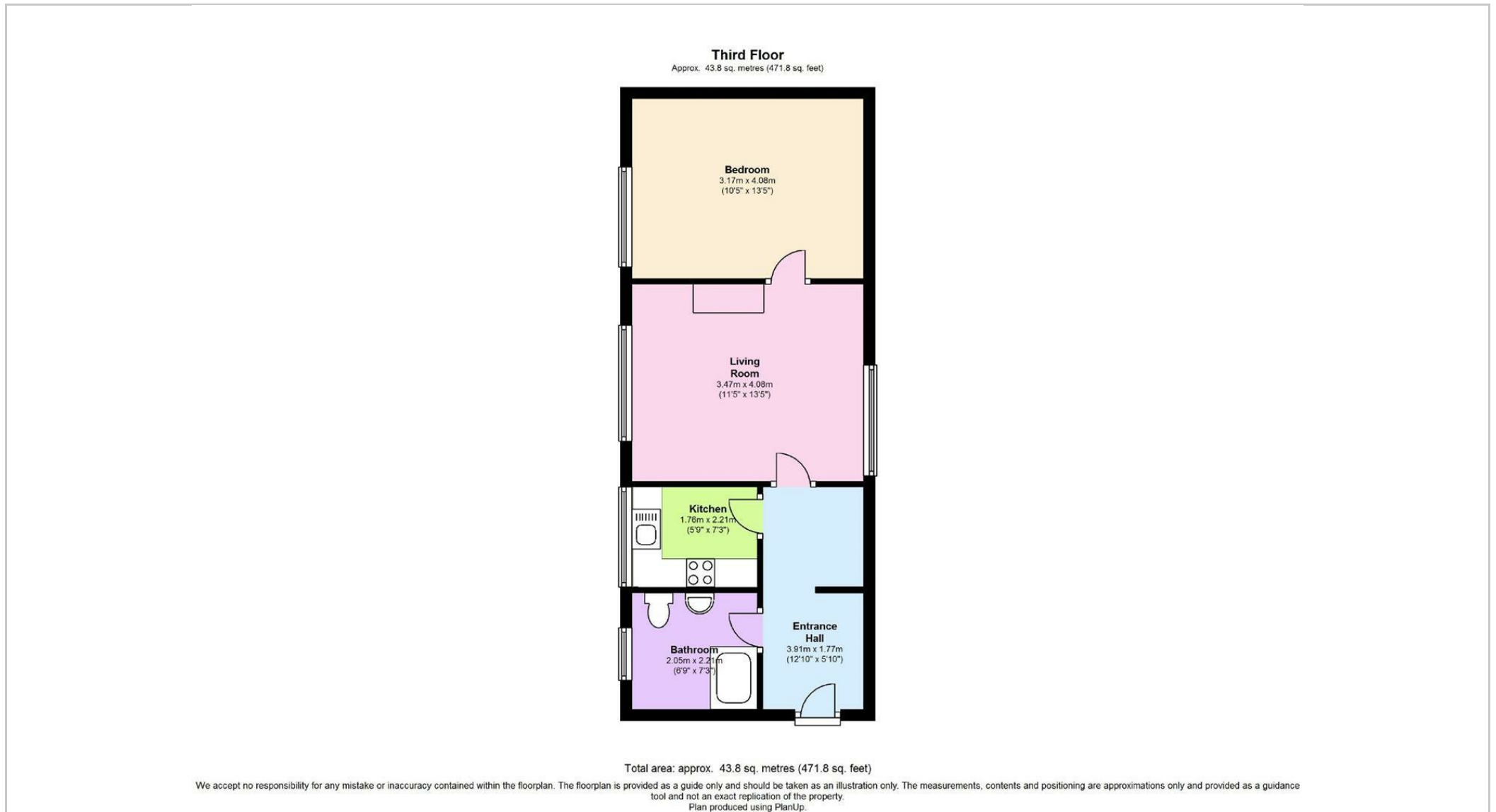
Unfurnished

Council Tax Band: A

Available: 30th August 2024

EPC: E

## Floor Plans



These particulars, whilst believed to be accurate are set out as a general outline only for guidance and do not constitute any part of an offer or contract. Intending purchasers should not rely on them as statements of representation of fact, but must satisfy themselves by inspection or otherwise as to their accuracy. No person in this firm's employment has the authority to make or give any representation or warranty in respect of the property.