



15, Davison Drive, Weir Hill Preston St, Shrewsbury, SY2 5WE

£1,600 Per Month



15, Davison Drive, Weir Hill Preston St, Shrewsbury, SY2 5WE

**£1,600 Per Month**

VIRTUAL TOUR AVAILABLE - Recently built five bedroom detached house in a desirable residential location adjacent to Prestfelde School playing fields and extremely convenient for both Shrewsbury Business Park and the M54 / ring road. Includes integral garage.

Available: 22/09/24

## Description

Comprising: Entrance hall including understairs cupboard, good sized living room, open plan kitchen including integrated appliances, dining area with double doors to rear, utility room, cloakroom. Stairs to first floor landing, bathroom, master bedroom including ensuite shower room, three further double bedrooms, single bedroom / study. Gas central heating, double glazing. Driveway parking, integral single garage. Front and rear garden. EPC B



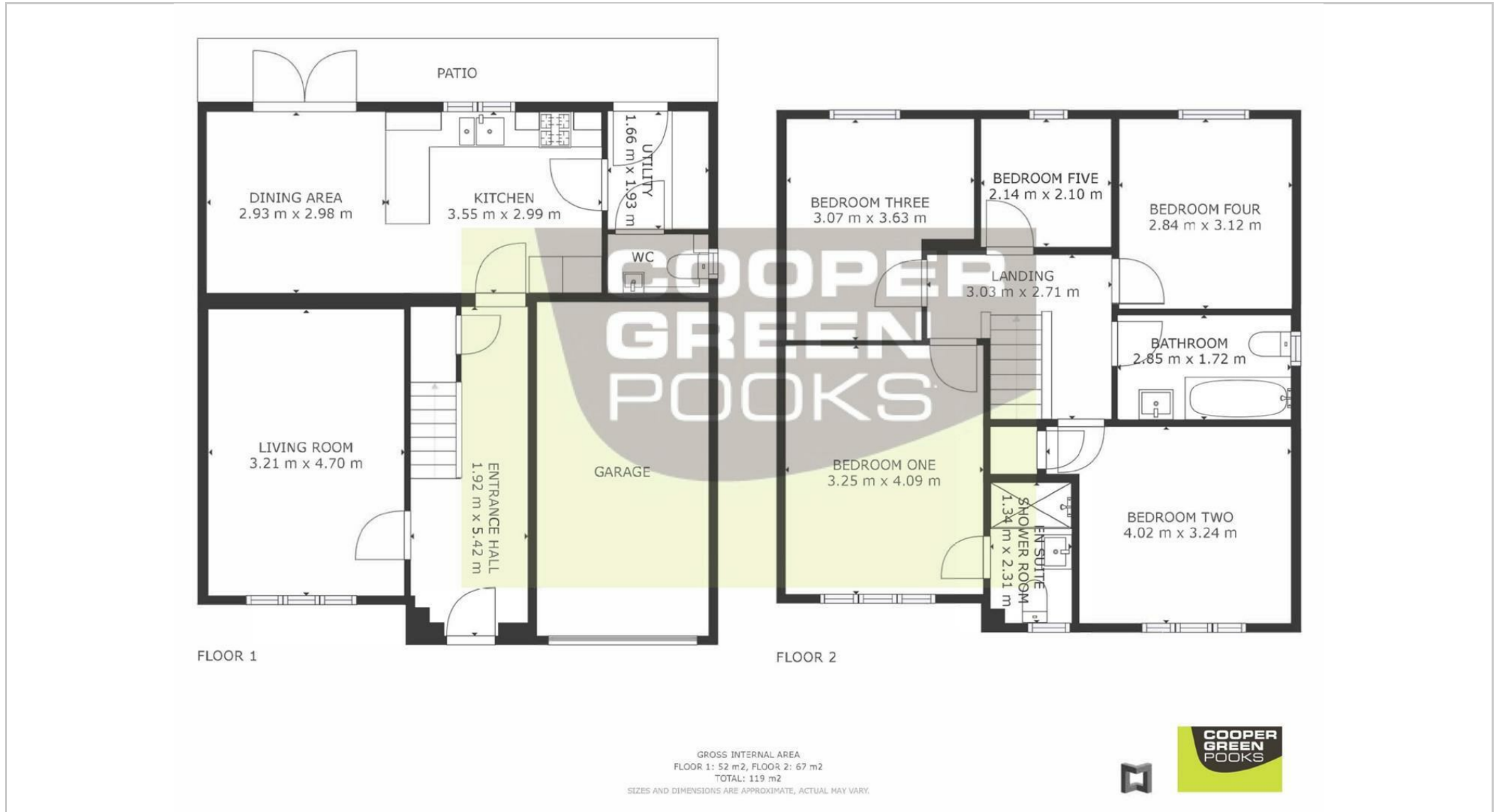
Unfurnished

Council Tax Band: E

Available: 22nd September 2024

EPC: B

## Floor Plans



These particulars, whilst believed to be accurate are set out as a general outline only for guidance and do not constitute any part of an offer or contract. Intending purchasers should not rely on them as statements of representation of fact, but must satisfy themselves by inspection or otherwise as to their accuracy. No person in this firm's employment has the authority to make or give any representation or warranty in respect of the property.