



**Penthouse K, 2-5 Claremont Buildings, Claremont Bank, Shrewsbury, SY1 1RJ**  
£2,250 Per Month



Penthouse K, 2-5 Claremont Buildings, Claremont Bank, Shrewsbury, SY1 1RJ

**£2,250 Per Month**

VIRTUAL TOUR AVAILABLE - Superb three bedroom penthouse apartment finished to the highest standards and situated in a landmark Georgian building overlooking Shrewsbury's beautiful Quarry Park. Includes garaged parking space and lift access.

Available: 01/08/24

## Description

Comprising: Communal entrance with lift to top floor, private large entrance hall with built in storage cupboards, luxury kitchen with island, double range cooker, American style fridge freezer with wine fridge and further integrated appliances, large living room/dining room with views over Shrewsbury town centre, modern fireplace with built in storage either side, master bedroom with built in wardrobes, dressing table and views over Quarry Park, ensuite bathroom with roll top bath and separate shower, bedroom two with built in wardrobes, ensuite shower room and views over Quarry Park, bedroom three with built in wardrobe and views over Shrewsbury town centre, study with bespoke storage and desk and overlooking Quarry Park, shower room. Gas central heating. Garaged parking, professionally maintained communal garden. EPC TBC



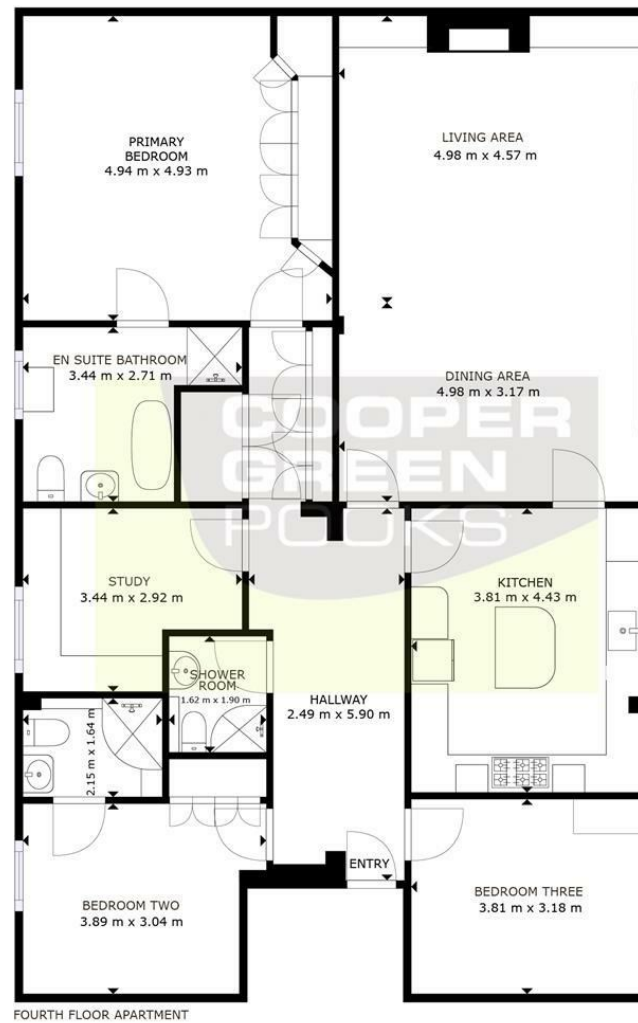
Unfurnished

Council Tax Band: F

Available: 1st August 2024

EPC:

## Floor Plans



FOURTH FLOOR APARTMENT

GROSS INTERNAL AREA  
FLOOR PLAN: 150 m<sup>2</sup>  
SIZES AND DIMENSIONS ARE APPROXIMATE, ACTUAL MAY VARY.

These particulars, whilst believed to be accurate are set out as a general outline only for guidance and do not constitute any part of an offer or contract. Intending purchasers should not rely on them as statements of representation of fact, but must satisfy themselves by inspection or otherwise as to their accuracy. No person in this firm's employment has the authority to make or give any representation or warranty in respect of the property.