



39, Glebe Road, Bayston Hill, Shrewsbury, SY3 0PS
£1,050 Per Month



39, Glebe Road, Bayston Hill, Shrewsbury, SY3 OPS

£1,050 Per Month

VIRTUAL TOUR AVAILABLE - A recently redecorated, spacious and modernised three bedroom semi-detached family home in the popular village of Bayston Hill, a short distance to the south of Shrewsbury with excellent road links via both the M54 and A5.

Available: 16/08/24

Description

Comprising: Entrance hall, large living room, kitchen with built in oven, electric hob, microwave, fridge and dishwasher, utility with space for washing machine and further appliances, dining room, study, family room. Stairs to first floor landing, three double bedrooms two of which have integrated wardrobes, bathroom with a shower over the bath. Driveway parking. Front and rear gardens, two sheds. Gas central heating. Double glazing. EPC D

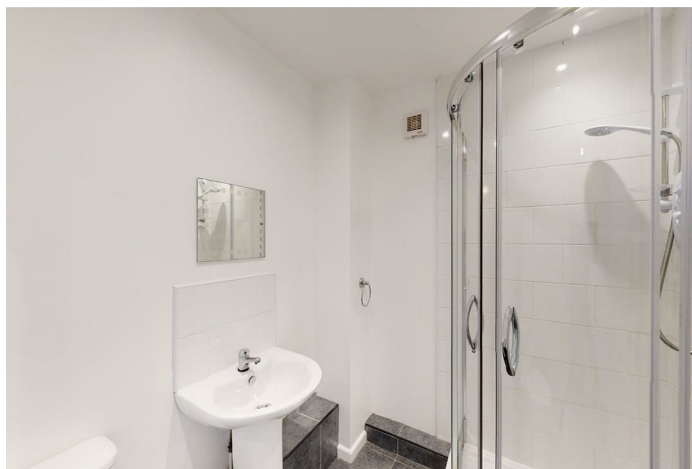


Unfurnished

Council Tax Band: C

Available: 16th August 2024

EPC: D



Floor Plans

GROUND FLOOR

APPROX. 69.6 SQ. METRES (749.3 SQ. FEET)



FIRST FLOOR

APPROX. 46.3 SQ. METRES (498.1 SQ. FEET)



TOTAL AREA: APPROX. 115.9 SQ. METRES (1247.3 SQ. FEET)

We accept no responsibility for any mistake or inaccuracy contained within the floorplan. The floorplan is provided as a guide only and should be taken as an illustration only. The measurements, contents and positioning are approximations only and provided as a guidance tool and not an exact replication of the property.
Plan produced using PlanUp.

These particulars, whilst believed to be accurate are set out as a general outline only for guidance and do not constitute any part of an offer or contract. Intending purchasers should not rely on them as statements of representation of fact, but must satisfy themselves by inspection or otherwise as to their accuracy. No person in this firm's employment has the authority to make or give any representation or warranty in respect of the property.