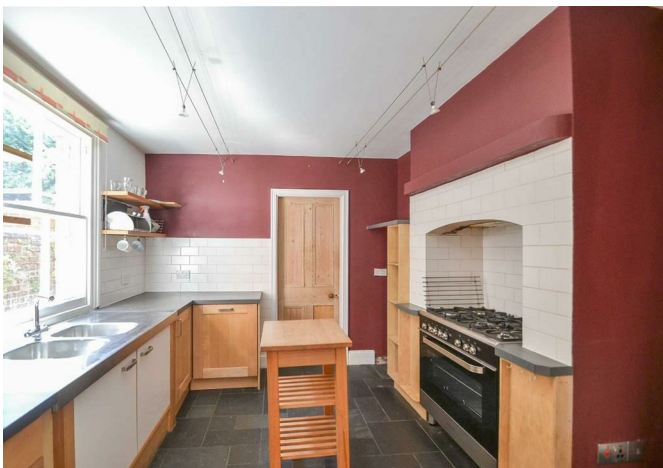




84, Canon Street, Cherry Orchard, Shrewsbury, SY2 5HF

£1,250 Per Month



84, Canon Street, Cherry Orchard, Shrewsbury, SY2 5HF

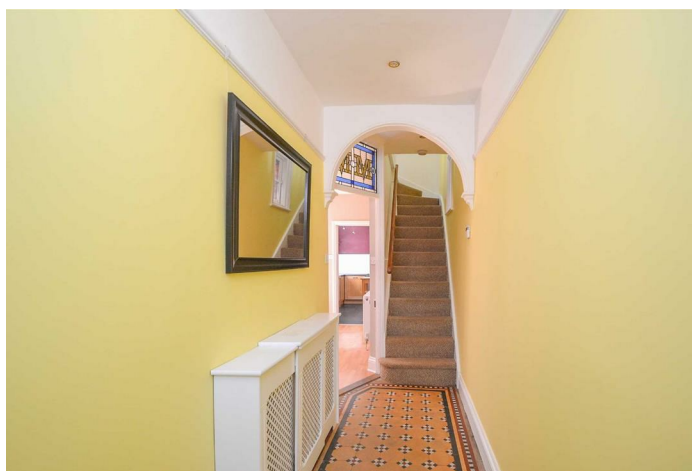
£1,250 Per Month

VIRTUAL TOUR AVAILABLE - Most attractive larger style three bedroom semi detached Victorian house in the very desirable residential neighbourhood of Cherry Orchard, a short walk from Shrewsbury town centre.

Available: 19/08/24

Description

Comprising: Entrance hall, large open plan living room including log burner, bay window and separate dining area. Kitchen including dishwasher and range cooker, utility including washing machine and tumble dryer, downstairs cloakroom, door to rear. Upstairs to landing including very large storage cupboard and access to loft with pull down ladder, master bedroom including en-suite shower room, two further double bedrooms, bathroom including shower. Landscaped low maintenance south facing rear garden including sitting area, shed and log store. The property also benefits to side access to the rear. EPC D



Unfurnished

Council Tax Band: C

Available: 19th August 2024

EPC: D

Floor Plans



Total area: approx. 114.8 sq. metres (1236.0 sq. feet)

We accept no responsibility for any mistake or inaccuracy contained within the floorplan. The floorplan is provided as a guide only and should be taken as an illustration only. The measurements, contents and positioning are approximations only and provided as a guidance tool and not an exact replication of the property.
Plan produced using PlanUp.

These particulars, whilst believed to be accurate are set out as a general outline only for guidance and do not constitute any part of an offer or contract. Intending purchasers should not rely on them as statements of representation of fact, but must satisfy themselves by inspection or otherwise as to their accuracy. No person in this firm's employment has the authority to make or give any representation or warranty in respect of the property.