



Apartment 20 Cambrian House, Chester Street, Shrewsbury, SY1 1NA

2 bedroom apartment—£350,000 Leasehold

Apartment 20 Cambrian House, Chester Street, Shrewsbury, SY1 1NA

Coopergreenpooks.co.uk

£350,000 Leasehold—2 bedroom apartment

sales@cgpooks.co.uk

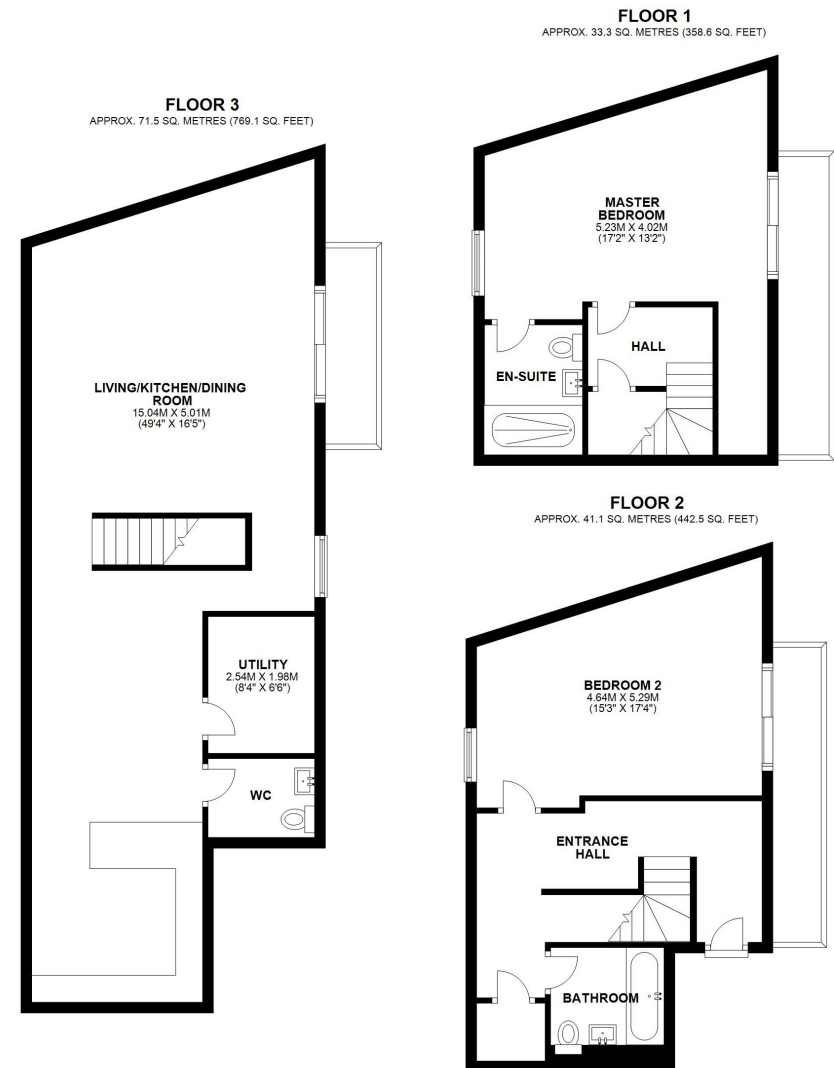
This individually designed triplex apartment occupies the top three floors within a contemporary town centre development, benefitting from multiple balcony's offering impressive views, as well as two private parking spaces.

KEY FEATURES

- Entrance hall with staircase to both the upper and lower floors
- On the top floor is a fantastic open plan kitchen/living/dining area with oak flooring, and the living room having access to a private balcony which provides views of the castle, train station and town centre
- Contemporary fitted kitchen with high quality integrated appliances, granite work surfaces, breakfast bar and feature downdraft extractor
- There is also a separate utility and cloakroom/WC on this floor
- On the middle and lower floors are two good sized double bedrooms, both having access to large balconies, a separate family bathroom and an en-suite shower room to the master
- Triple glazed windows, heat recovery system and under floor heating throughout
- Private allocated parking space within the secure ground floor garage and an additional parking space within a gated parking area
- Useful storage unit, also located on the ground floor
- A superb location, just a stone's throw from the heart of the town centre

Cooper Green Pooks
3 Barker Street
Shrewsbury
SY1 1QF

www.cgpooks.co.uk



TOTAL AREA: APPROX. 145.9 SQ. METRES (1570.2 SQ. FEET)

We accept no responsibility for any mistake or inaccuracy contained within the floorplan. The floorplan is provided as a guide only and should be taken as an illustration only. The measurements, contents and positioning are approximations only and provided as a guidance tool and not an exact replication of the property.
Plan produced using Planip.





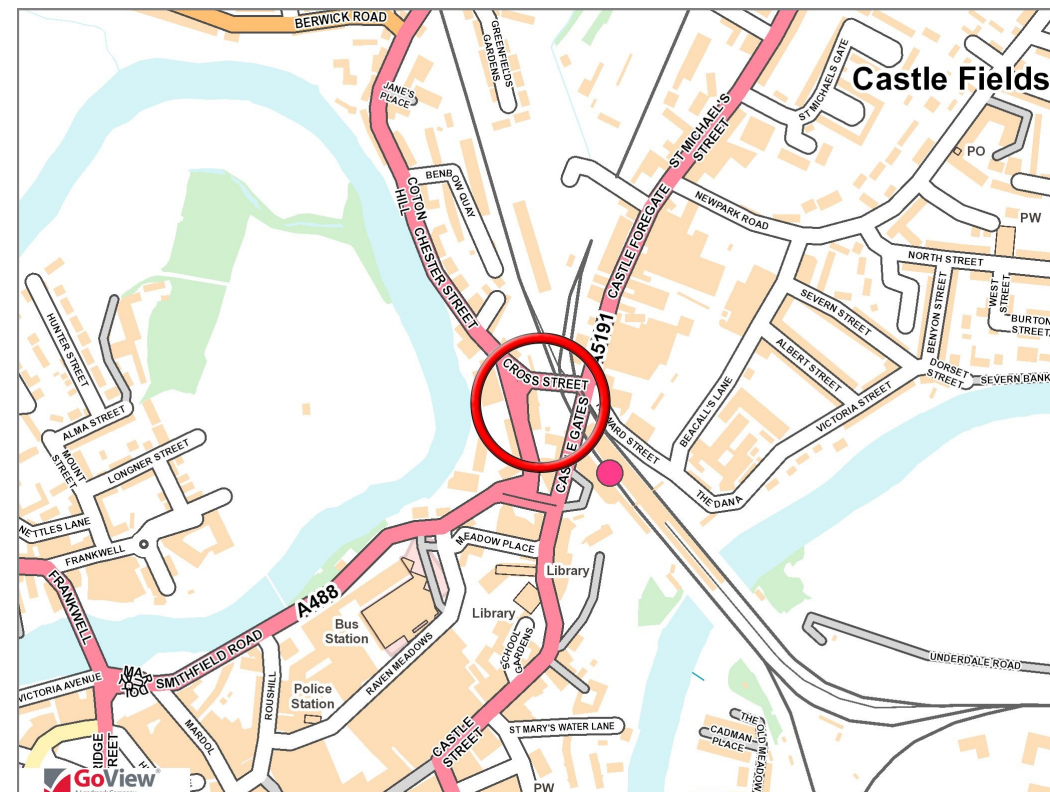
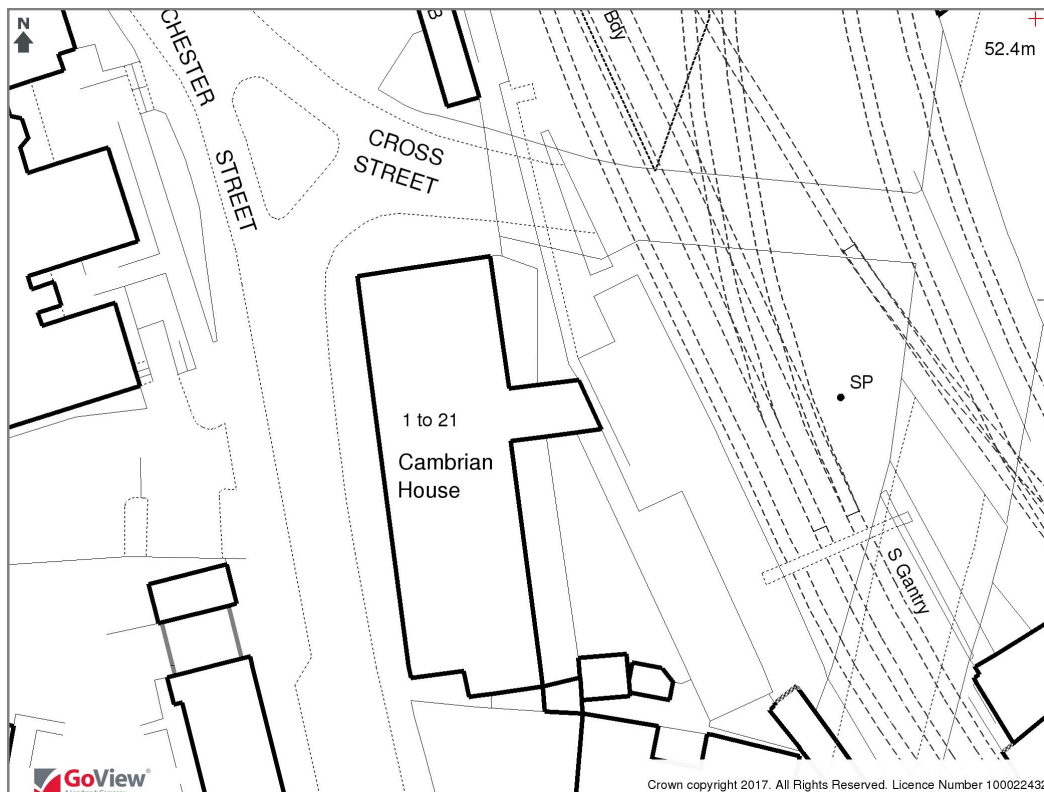


Apartment 20 Cambrian House, Chester Street, Shrewsbury, SY1 1NA

Coopergreenpooks.co.uk

£350,000 Leasehold—2 bedroom apartment

sales@cgpooks.co.uk



Tenure	Leasehold
Service charge:	£3,000 approx
Ground rent:	£200
Term:	199 years from and including 1 January 2016 and to and including 31 December 2214
Local Authority	Shropshire Council
Council Tax	Band C
Services	All mains services are connected



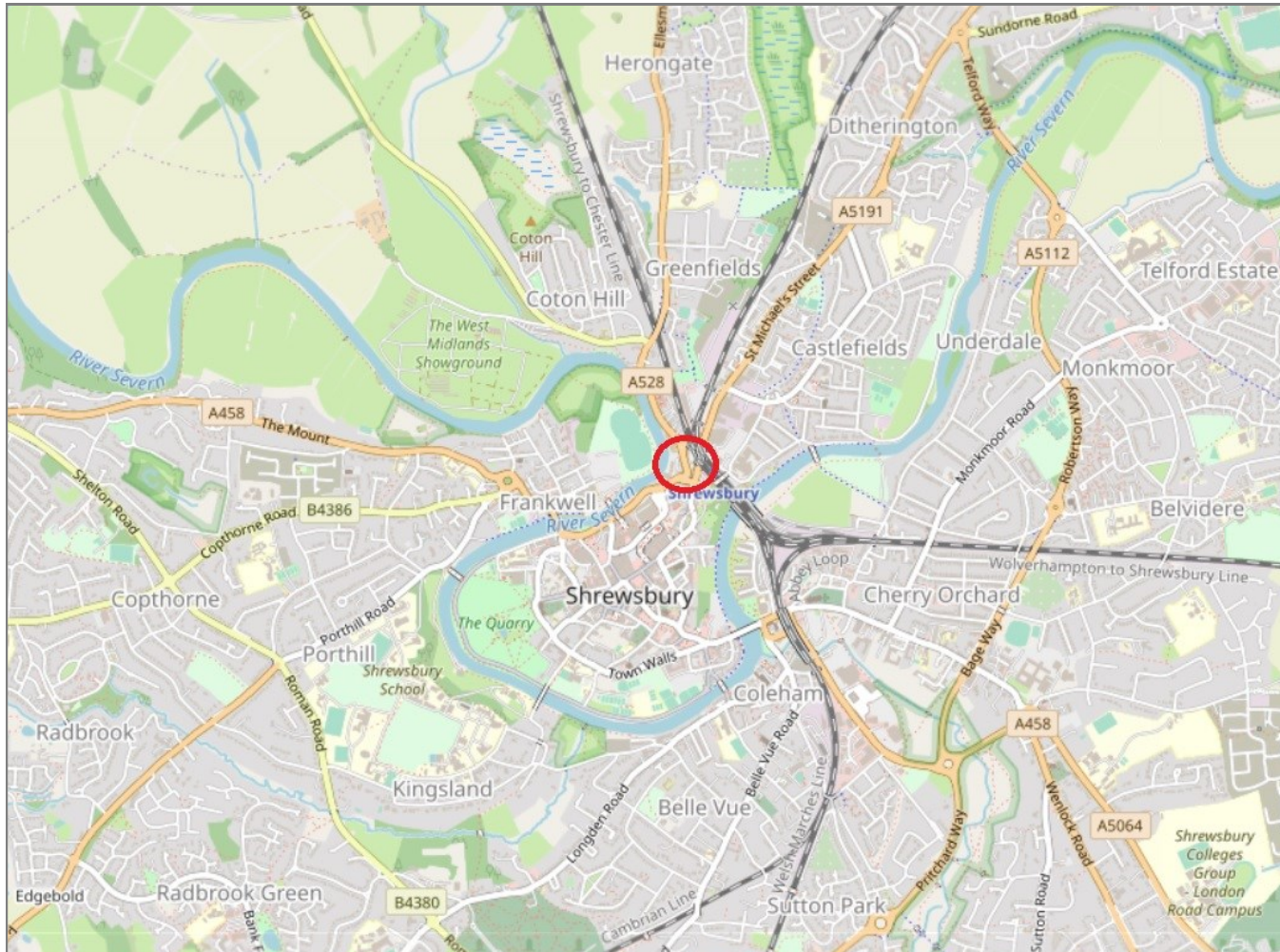
RICS

Apartment 20 Cambrian House, Chester Street, Shrewsbury, SY1 1NA

Coopergreenpooks.co.uk

£350,000 Leasehold—2 bedroom apartment

sales@cgpooks.co.uk



IMPORTANT NOTICE: Cooper Green Pooks for themselves and for the lessors or vendors of this property whose agents they are give notice that: 1 No appliances, services or service installations have been tested and no warranty as to suitability or serviceability is implied. Any prospective purchaser or lessee is advised to obtain verification from their surveyor or solicitor. 2. The particulars are set out as a general outline only for the guidance of the intended purchasers or lessees and do not constitute, nor constitute part of, an offer or contract. 3. All descriptions, reference to condition and necessary permissions for use and occupation and other details are given in good faith and are believed to be correct but any intending purchasers or lessees should not rely on them as statements or representation of fact but satisfy themselves by inspection or otherwise as to the correctness of each of them. 4. No person in the employment of Cooper Green Pooks has any authority to make or give any representation or warranty whatsoever in relation to this property. 5. All rentals and prices are quoted exclusive of Stamp Duty, legal and surveyors fees and any other associated purchasers or lessees costs. 6. Floor plans are indicative only and should not be relied on. 7. The plan showing the boundary of the property is indicative only and has not been checked against the legal title so should not be relied on. 8. All dimensions, floor areas and site areas are only approximate and should not be relied on. Dimensions are generally maximum room dimension.