



**28 Bufton Close, Copthorne Keep, Shrewbury SY3 8FH**

2 bedroom semi-detached house—£254,800 Freehold

# 28 Bufton Close, Copthorne Keep, Shrewsbury SY3 8FH

Coopergreenpooks.co.uk

£254,800 Freehold—2 bedroom semi-detached house

sales@cgpooks.co.uk

Occupying a lovely cul-de-sac position within a very popular modern development, walking distance from the town centre, this neatly presented semi-detached house offers thoughtfully designed accommodation, while benefitting from a private rear garden and driveway parking.

## KEY FEATURES

- Entrance hall opening to living room and cloakroom
- Good sized living area with useful storage and turning staircase to landing
- Open plan kitchen/dining room, complete with a range of fitted units and glazed double doors to the rear garden
- Two bedrooms and a well-appointed family bathroom on the first floor
- uPVC double glazed windows and gas fired central heating
- Private rear garden, laid to lawn with paved terrace and gated access to side
- Driveway to front providing parking for two cars
- A great location within a popular and attractively designed new development, within the grounds of Shrewsbury's former barracks, just a short walk from the Quarry Park and town centre

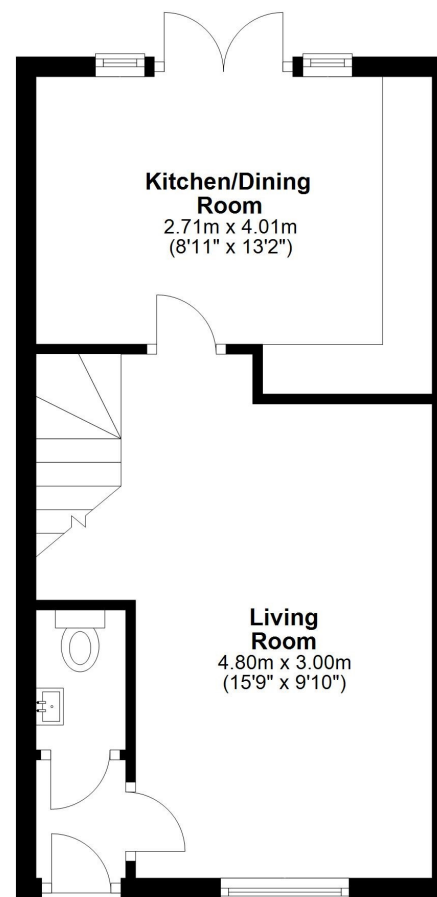
Cooper Green Pooks  
3 Barker Street  
Shrewsbury  
SY1 1QF

www.cgpooks.co.uk  
sales@cgpooks.co.uk  
01743 276666



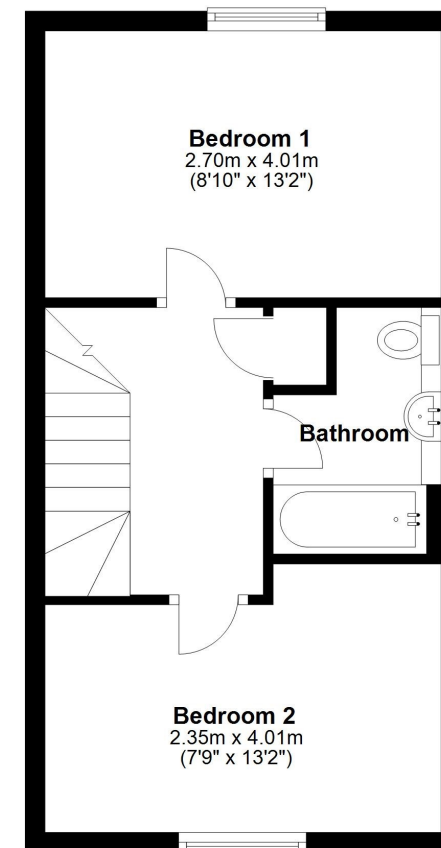
## Ground Floor

Approx. 32.5 sq. metres (349.6 sq. feet)



## First Floor

Approx. 32.5 sq. metres (349.6 sq. feet)



Total area: approx. 65.0 sq. metres (699.1 sq. feet)

We accept no responsibility for any mistake or inaccuracy contained within the floorplan. The floorplan is provided as a guide only and should be taken as an illustration only. The measurements, contents and positioning are approximations only and provided as a guidance tool and not an exact replication of the property.  
Plan produced using PlanUp.







# 28 Bufton Close, Copthorne Keep, Shrewsbury SY3 8FH

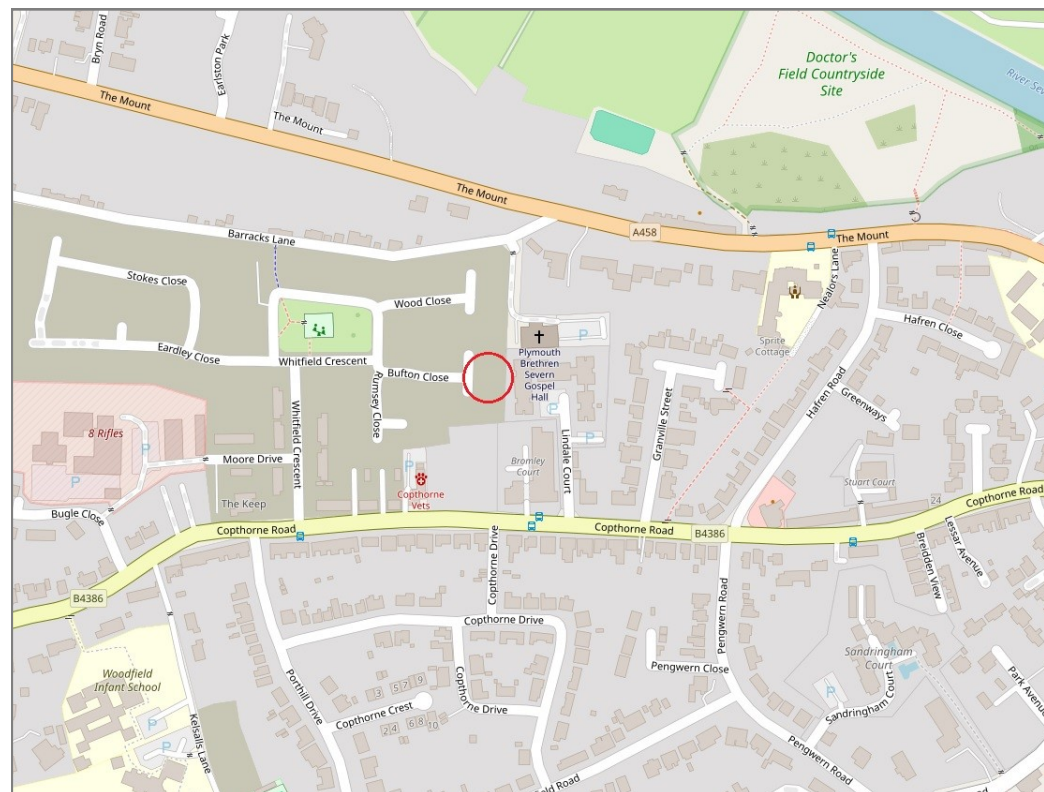
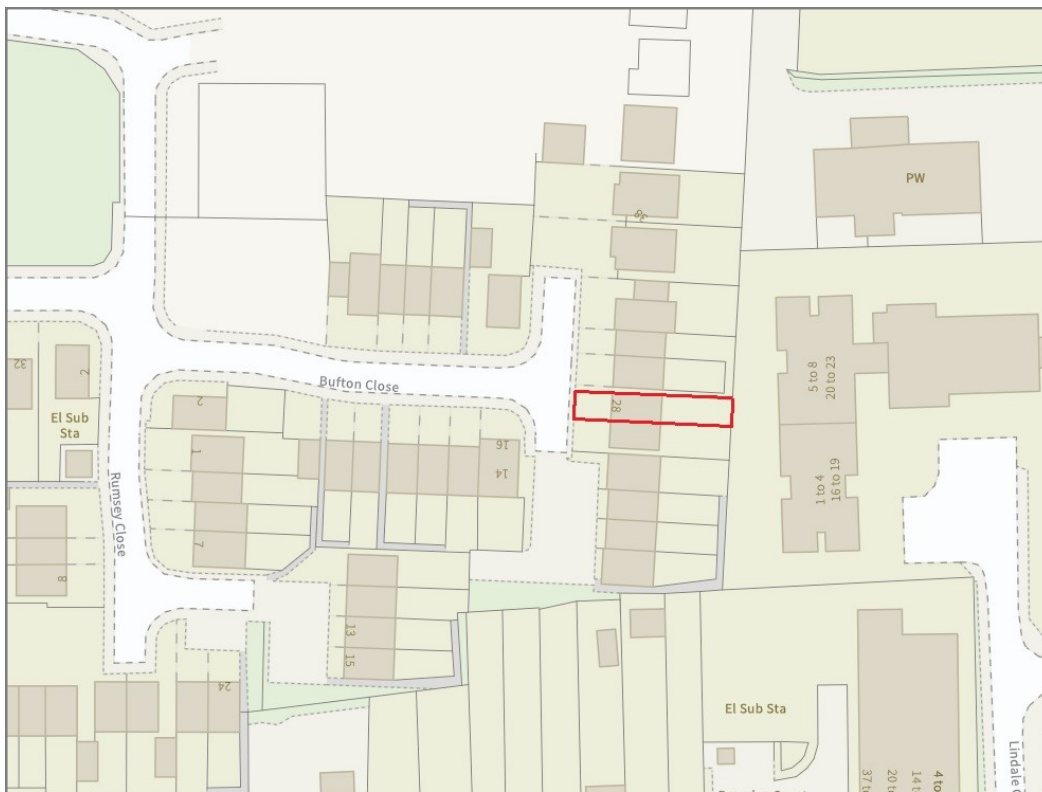
£254,800 Freehold—2 bedroom semi-detached house

sales@cgpooks.co.uk

rightmove 

 OnTheMarket.com

 **RICS**  
Regulated by RICS



**BOUNDARIES NOT CONFIRMED**

Tenure	<b>Freehold</b>
Local Authority	<b>Shropshire Council</b>
Council Tax	<b>Band C</b>
EPC Band	<b>Band B</b>
Services	<b>All mains services are connected</b>

 **Expert mortgage advice available**

3 Barker St, Shrewsbury SY1 1QF

**Cooper Green Pooks**  
**01743 276666**



Your home may be repossessed if you do not keep up repayments on your mortgage.

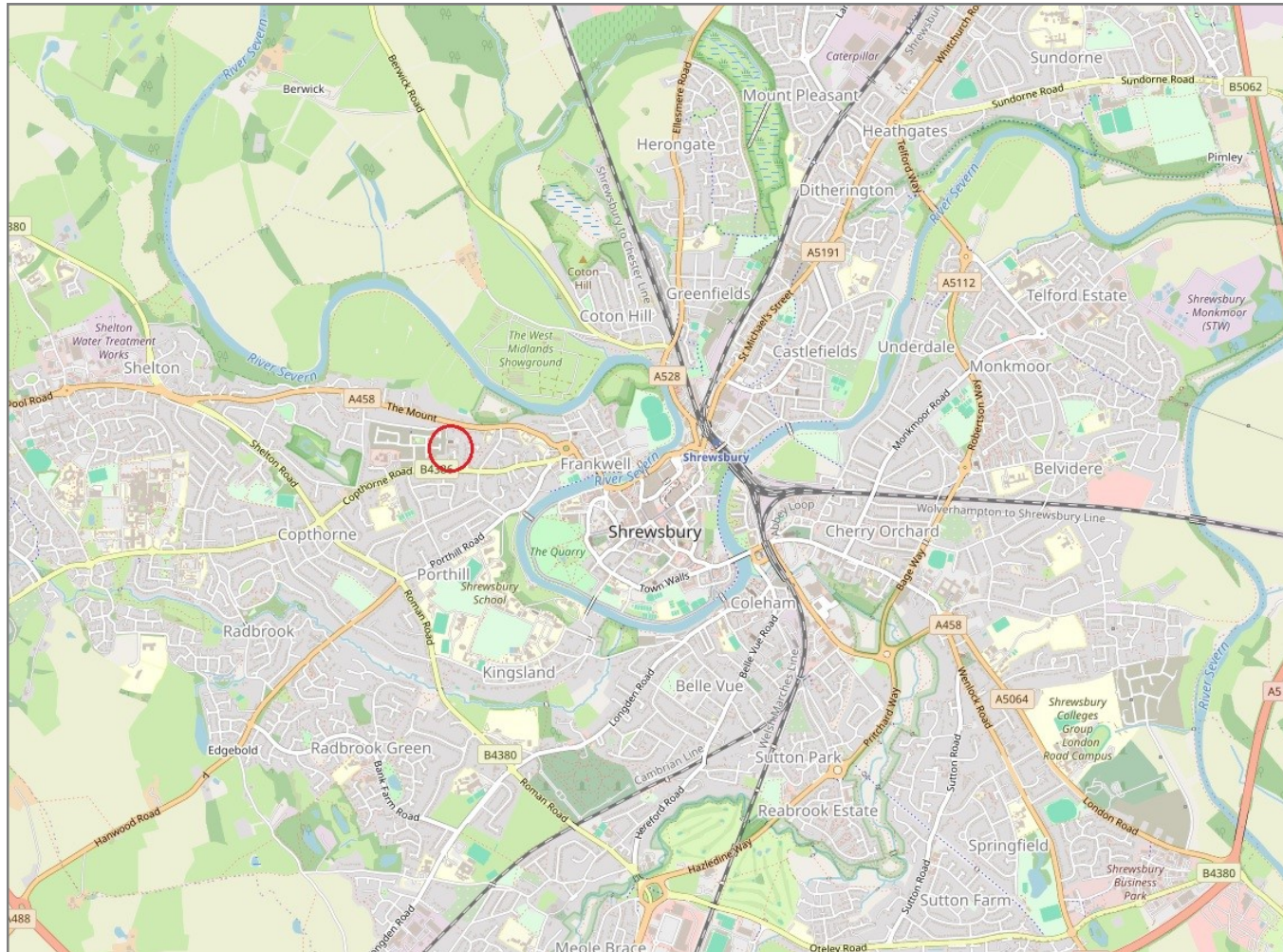
There may be a fee for mortgage advice. The actual amount you pay will depend upon your circumstances. The fee is up to 1% but a typical fee is 0.3% of the amount borrowed.

# 28 Bufton Close, Copthorne Keep, Shrewsbury SY3 8FH

Coopergreenpooks.co.uk

£254,800 Freehold—2 bedroom semi-detached house

sales@cgpooks.co.uk



**IMPORTANT NOTICE:** Cooper Green Pooks for themselves and for the lessors or vendors of this property whose agents they are give notice that: 1 No appliances, services or service installations have been tested and no warranty as to suitability or serviceability is implied. Any prospective purchaser or lessee is advised to obtain verification from their surveyor or solicitor. 2. The particulars are set out as a general outline only for the guidance of the intended purchasers or lessees and do not constitute, nor constitute part of, an offer or contract. 3. All descriptions, reference to condition and necessary permissions for use and occupation and other details are given in good faith and are believed to be correct but any intending purchasers or lessees should not rely on them as statements or representation of fact but satisfy themselves by inspection or otherwise as to the correctness of each of them. 4. No person in the employment of Cooper Green Pooks has any authority to make or give any representation or warranty whatsoever in relation to this property. 5. All rentals and prices are quoted exclusive of Stamp Duty, legal and surveyors fees and any other associated purchasers or lessees costs. 6. Floor plans are indicative only and should not be relied on. 7. The plan showing the boundary of the property is indicative only and has not been checked against the legal title so should not be relied on. 8. All dimensions, floor areas and site areas are only approximate and should not be relied on. Dimensions are generally maximum room dimension.