



**2, Betton Street, Belle Vue, Shrewsbury, SY3 7NY**  
£1,050 Per Month



2, Betton Street, Belle Vue, Shrewsbury, SY3 7NY

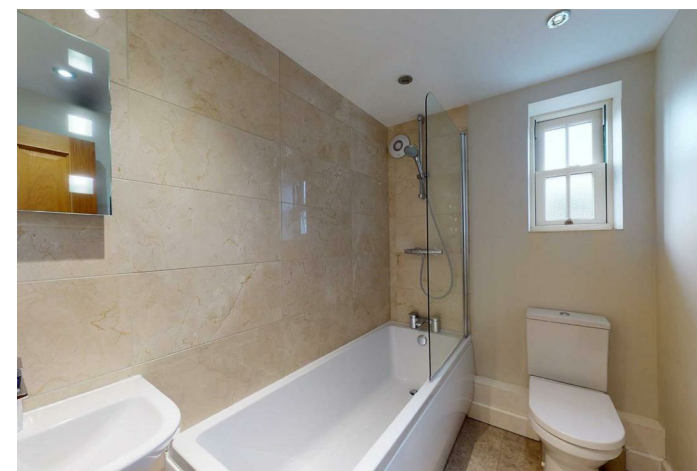
**£1,050 Per Month**

VIRTUAL TOUR AVAILABLE - Luxury FULLY FURNISHED two bedroom first floor modern apartment located in one of Shrewsbury's most popular residential areas a short walk from the town centre and close to road links. The property benefits from an allocated parking space to the rear.

Available: 14/08/24

## Description

Well maintained communal stairwell shared by one other apartment, entrance hall, new fitted kitchen including Bosch integrated appliances, living area, master bedroom including built in double wardrobe, luxury walk in wet room with underfloor heating, further double bedroom, bathroom with marble wall tiles. Gas central heating via a Worcester combi boiler, double glazed windows. One allocated parking space to the rear. EPC B



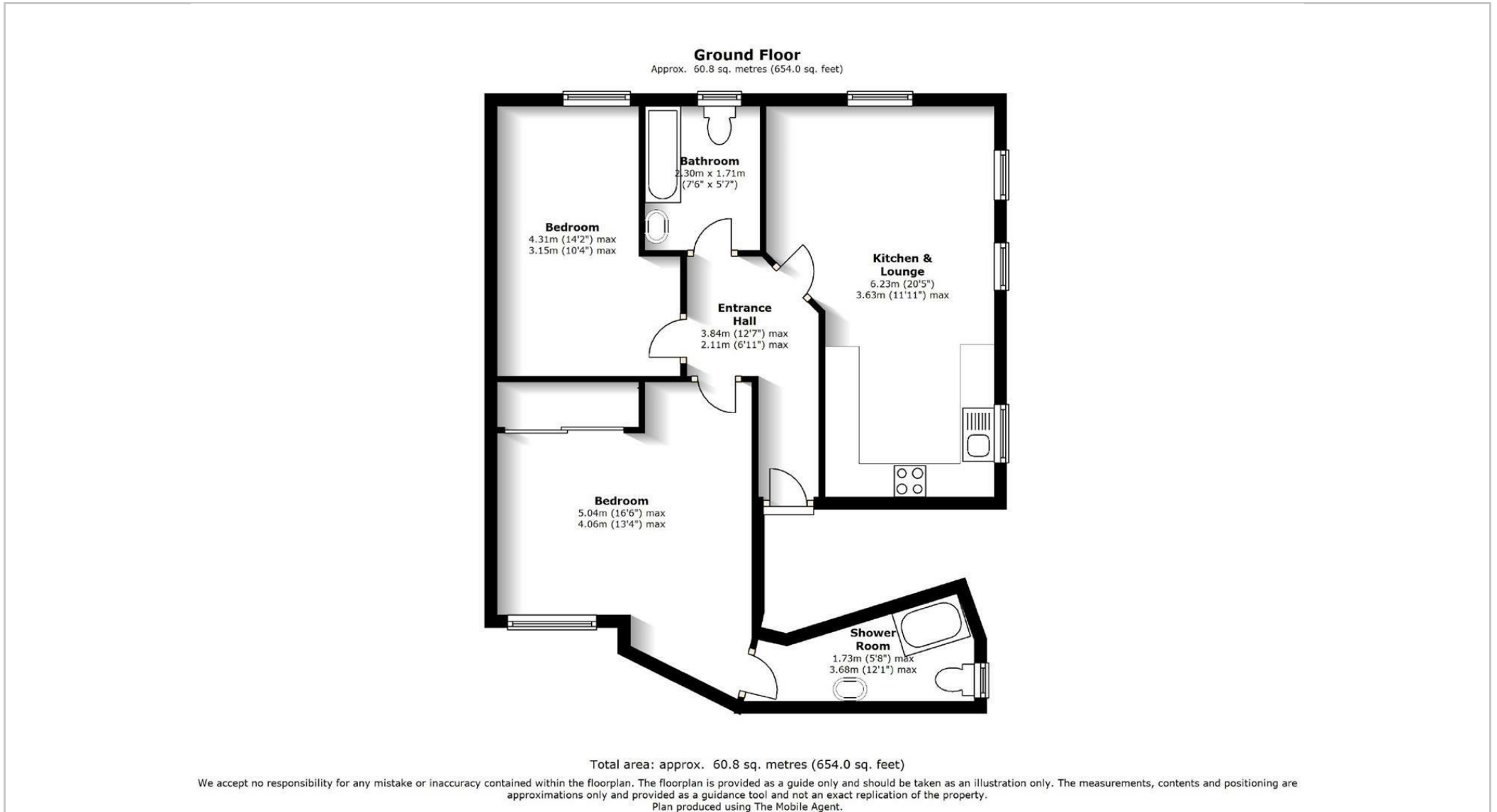
Furnished

Council Tax Band: B

Available: 14th August 2024

EPC: B

## Floor Plans



These particulars, whilst believed to be accurate are set out as a general outline only for guidance and do not constitute any part of an offer or contract. Intending purchasers should not rely on them as statements of representation of fact, but must satisfy themselves by inspection or otherwise as to their accuracy. No person in this firm's employment has the authority to make or give any representation or warranty in respect of the property.