



17, Roberts Way, Oteley Road, Shrewsbury, SY2 6FU
£1,600 Per Month



17, Roberts Way, Oteley Road, Shrewsbury, SY2 6FU

£1,600 Per Month

VIRTUAL TOUR AVAILABLE: Impressive new build four bedroom detached house in immaculate order throughout and benefiting from access to excellent road links and the nearby retail park. Includes single garage with rear side door and driveway parking for two cars.

Available: 07/09/2024

Description

Comprising: Entrance hall including store cupboard, downstairs WC, good sized living room, open plan kitchen including integrated fridge/freezer, washer/dryer, oven, hob and dishwasher, dining room with feature panelled wall and double doors to rear. Upstairs to first floor landing including airing cupboard, master bedroom with ensuite shower, three further double bedrooms with one currently arranged as a dressing room, bathroom with shower over bath, single garage including rear side door, garden with extensive patio area, driveway parking for 2 cars. Gas central heating, double glazing, various window blinds included. EPC B



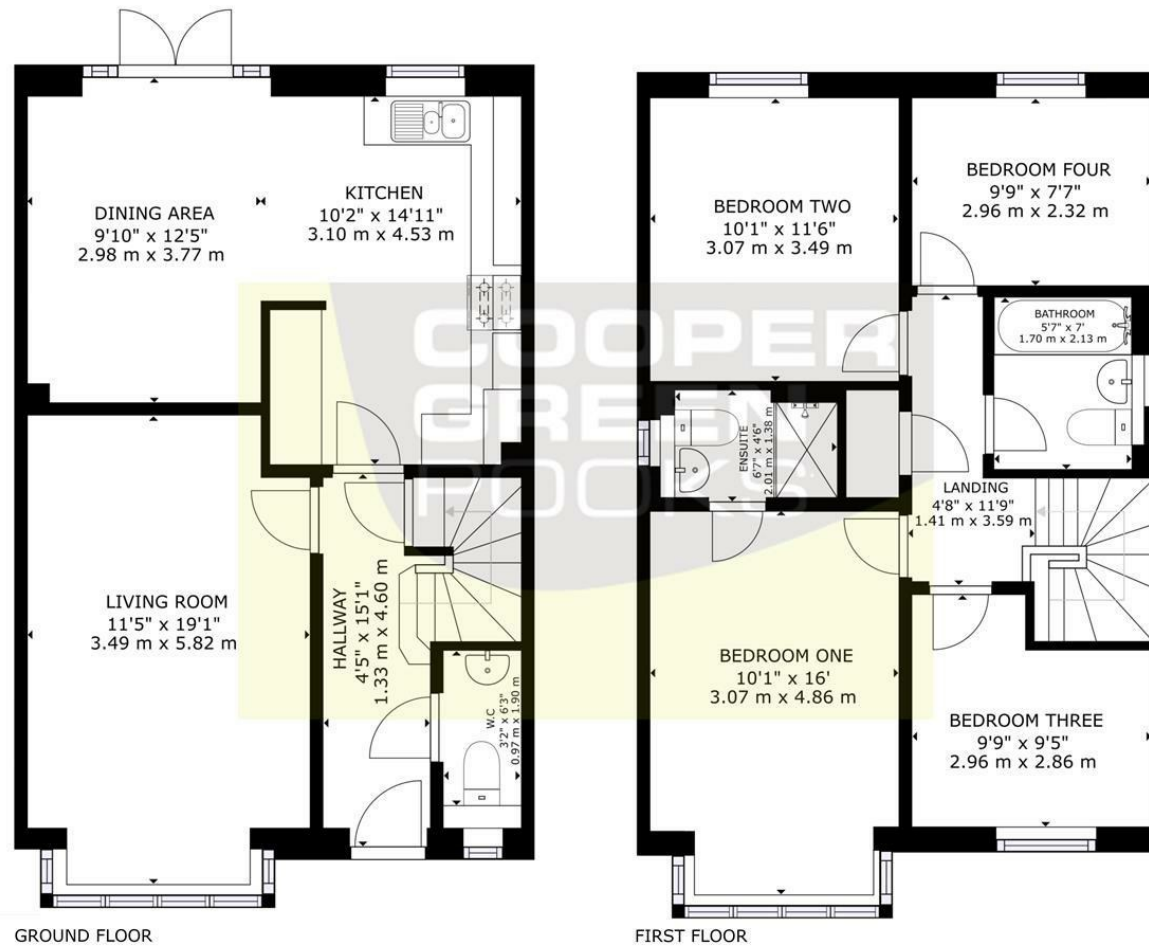
Unfurnished

Council Tax Band: E

Available: 7th September 2024

EPC: B

Floor Plans



GROSS INTERNAL AREA
GROUND FLOOR: 638 sq. ft. (59.24 m²), FIRST FLOOR: 642 sq. ft. (59.61 m²)
TOTAL: 1280 sq. ft. (118.85 m²)

SIZES AND DIMENSIONS ARE APPROXIMATE, ACTUAL MAY VARY.

These particulars, whilst believed to be accurate are set out as a general outline only for guidance and do not constitute any part of an offer or contract. Intending purchasers should not rely on them as statements of representation of fact, but must satisfy themselves by inspection or otherwise as to their accuracy. No person in this firm's employment has the authority to make or give any representation or warranty in respect of the property.