



7 Millmead, Sutton Road, Shrewsbury, SY2 6DR  
£495 Per Month



7 Millmead, Sutton Road, Shrewsbury, SY2 6DR

**£495 Per Month**

VIRTUAL TOUR AVAILABLE: First floor one bedroom flat in a converted former Edwardian School a short distance to the east of Shrewsbury town centre. Includes allocated parking and access to professionally maintained communal gardens.

Available: Immediately

## Description

Comprising: Communal entrance, stairs to first floor, private hallway, living room, small kitchen, bathroom including shower, double bedroom, communal laundry room. Gas central heating, double glazing. Allocated parking space. Professionally maintained communal gardens. EPC C



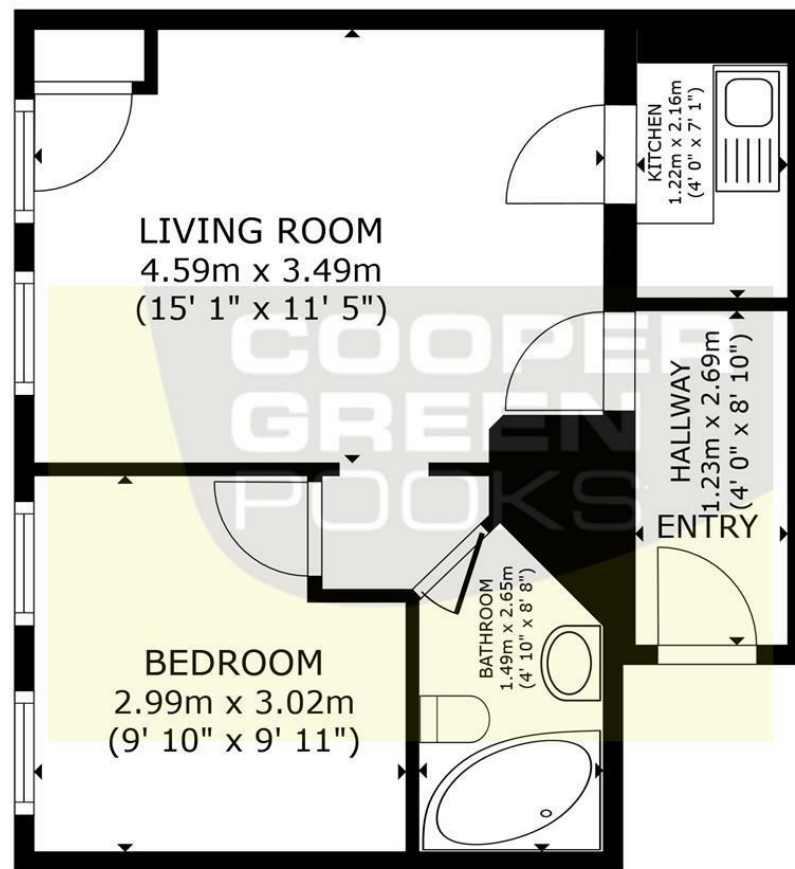
Unfurnished

Council Tax Band: A

Available: 1st July 2024

EPC: C

## Floor Plans



FIRST FLOOR APARTMENT

GROSS INTERNAL AREA  
FIRST FLOOR APARTMENT: 376 m<sup>2</sup> (404 sq. ft.)  
TOTAL: 37.6 m<sup>2</sup> (404 sq. ft.)

SIZES AND DIMENSIONS ARE APPROXIMATE, ACTUAL MAY VARY.

These particulars, whilst believed to be accurate are set out as a general outline only for guidance and do not constitute any part of an offer or contract. Intending purchasers should not rely on them as statements of representation of fact, but must satisfy themselves by inspection or otherwise as to their accuracy. No person in this firm's employment has the authority to make or give any representation or warranty in respect of the property.

3 Barker Street, Shrewsbury, Shropshire, SY1 1QF

Tel: 01743 276666 Email: [lettings@cgpooks.co.uk](mailto:lettings@cgpooks.co.uk) [www.cgpooks.co.uk](http://www.cgpooks.co.uk)