



79 Meadowbout Way, Bowbrook, Shrewsbury, SY5 8QB

5 bedroom detached house — £475,000 Freehold

79 Meadowbout Way, Bowbrook, Shrewsbury, SY5 8QB

Coopergreenpooks.co.uk

£475,000 Freehold—5 bedroom detached house

sales@cgpooks.co.uk

This very spacious and well-designed modern detached house provides fantastic family accommodation whilst being in a lovely quiet and private end of cul de sac position, with superb open views across the adjoining nature reserve.

KEY FEATURES

- Stylish and very well presented interior with excellent living space and 5 bedrooms.
- Covered entrance to hall with built in storage.
- Study/ playroom and good sized living room with bay to front and glazed double doors connecting to dining area.
- Large open plan kitchen/dining room with tiled flooring, window and glazed double doors to garden.
- Modern range of units with integrated appliances.
- Well fitted utility room with WC.
- 5 bedrooms, a well-appointed en-suite shower room and family bathroom.
- Double glazed windows and gas fired central heating.
- Driveway providing parking for 2 cars and access to a garage.
- Private lawned rear garden with good sized paved and decked sun terraces.
- Really good location with a lovely outlook on a popular new development, well placed on the west side of town, close to Royal Shrewsbury Hospital, the bypass and very good schools, including Priory and Meole secondary. The town centre is also just a 5/10-minute drive away.



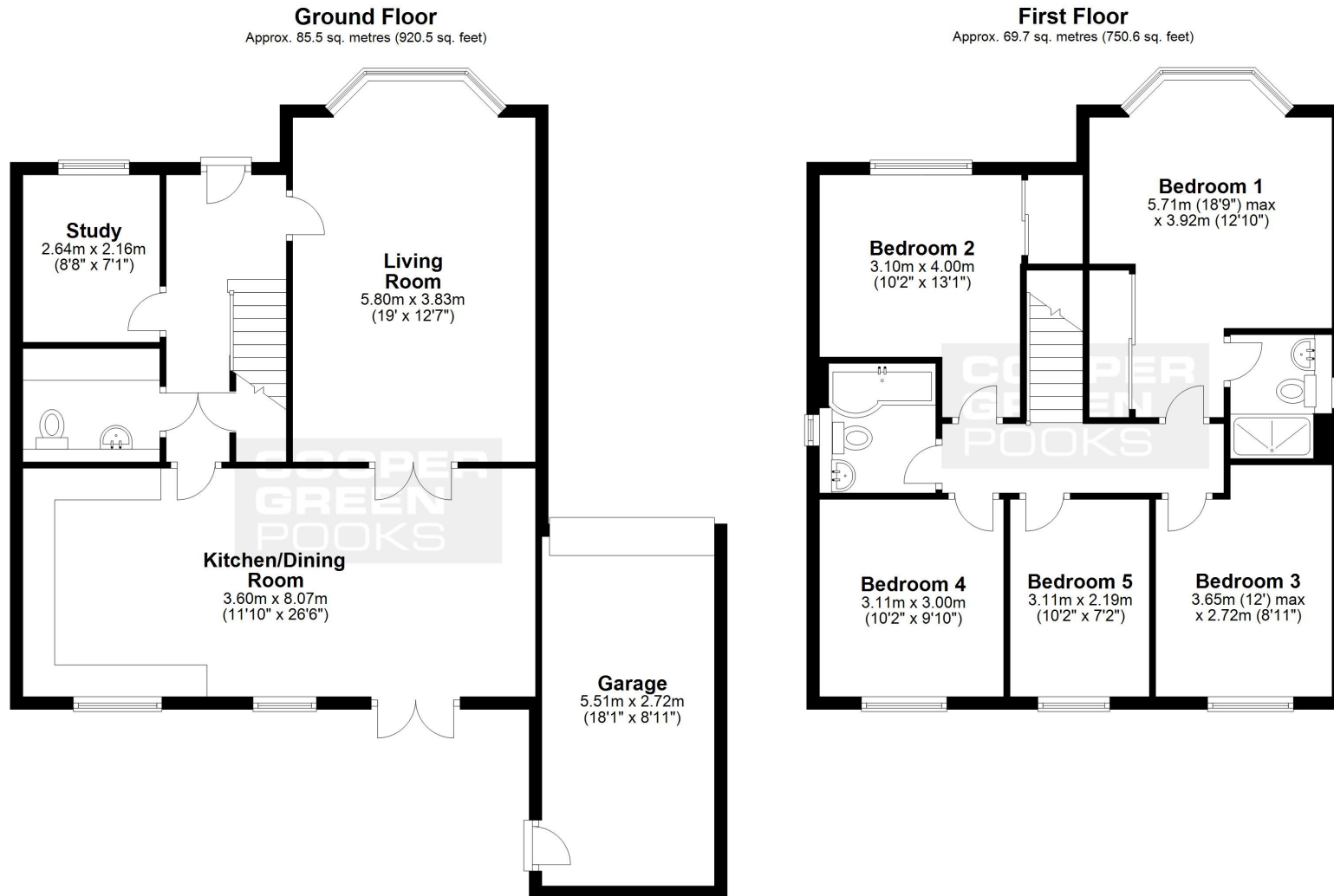
Cooper Green Pooks
3 Barker Street
Shrewsbury
SY1 1QF

www.cgpooks.co.uk
sales@cgpooks.co.uk
01743 276666



£475,000 Freehold—5 bedroom detached house

sales@cgpooks.co.uk



Total area: approx. 155.3 sq. metres (1671.1 sq. feet)

We accept no responsibility for any mistake or inaccuracy contained within the floorplan. The floorplan is provided as a guide only and should be taken as an illustration only. The measurements, contents and positioning are approximations only and provided as a guidance tool and not an exact replication of the property. Plan produced using PlanUp.







79 Meadowbout Way, Bowbrook, Shrewsbury, SY5 8QB

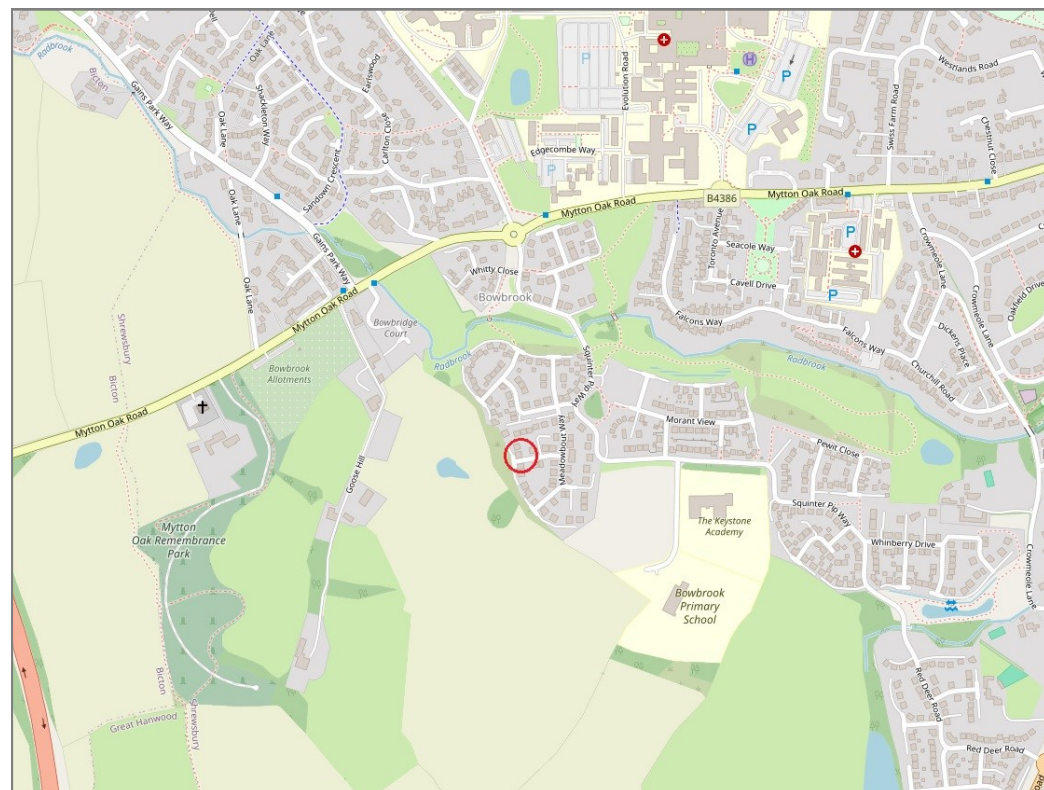
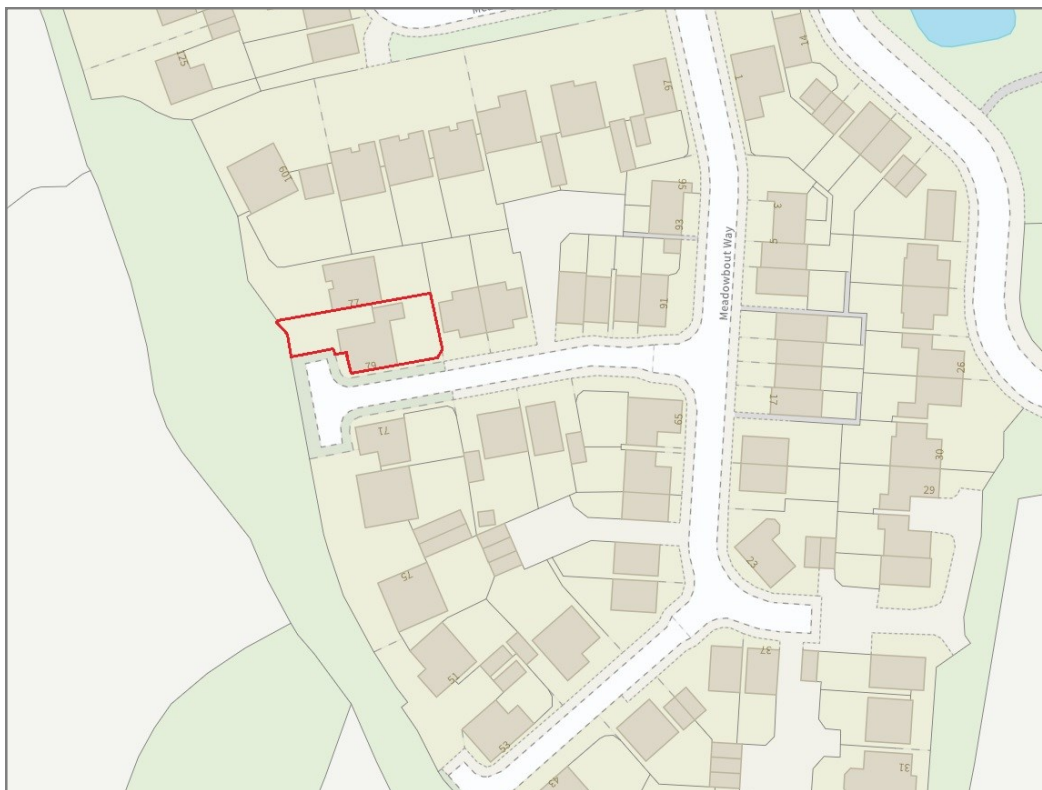
£475,000 Freehold—5 bedroom detached house

sales@cgpooks.co.uk

rightmove 

 OnTheMarket.com

 **RICS**
Regulated by RICS



BOUNDARIES NOT CONFIRMED

Tenure	Freehold
Local Authority	Shropshire Council
Council Tax	Band E
EPC Band	Band B
Services	All mains services are connected

 **Expert mortgage advice available**

3 Barker St, Shrewsbury SY1 1QF

Cooper Green Pooks
01743 276666



Your home may be repossessed if you do not keep up repayments on your mortgage.

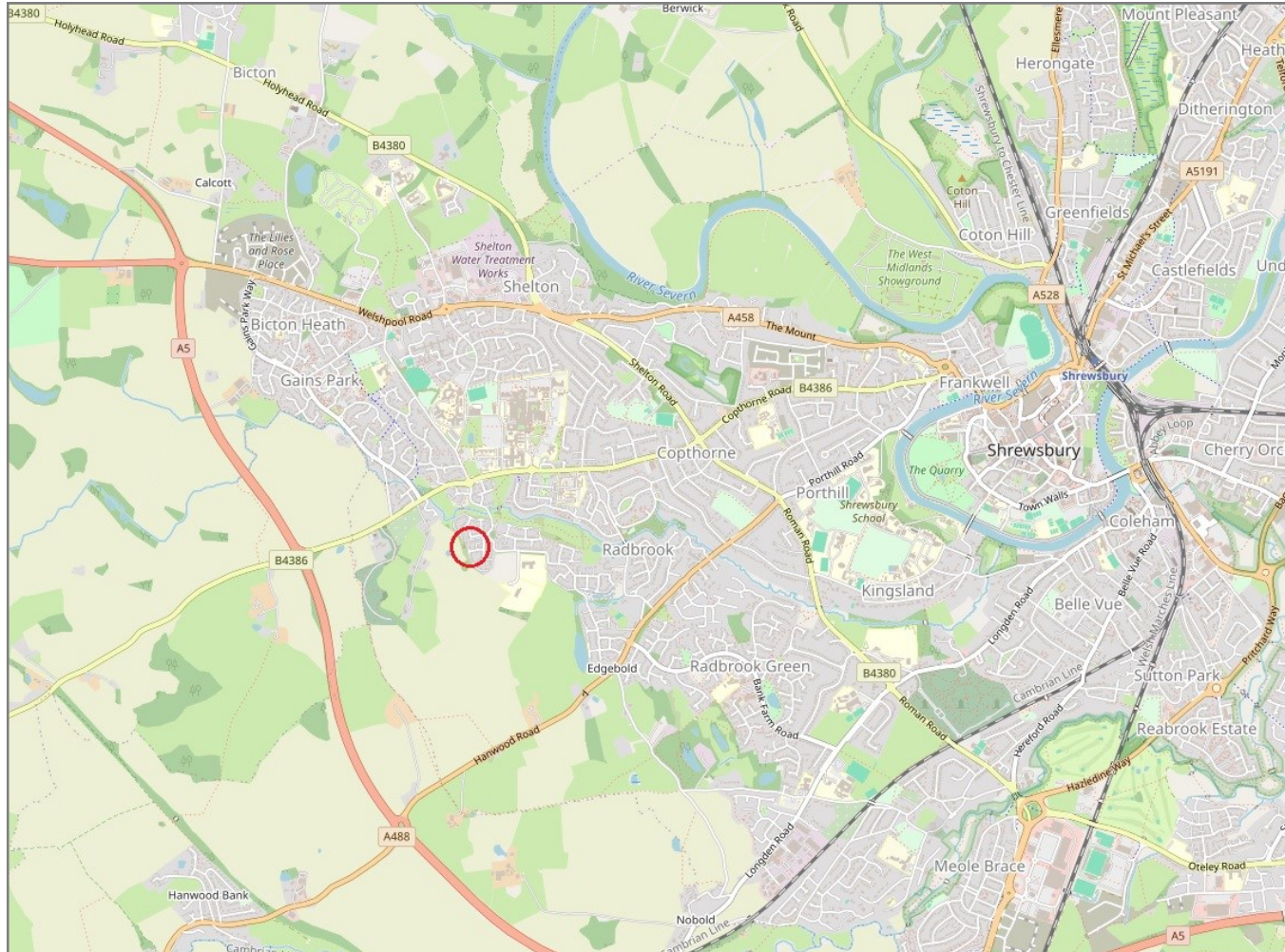
There may be a fee for mortgage advice. The actual amount you pay will depend upon your circumstances. The fee is up to 1% but a typical fee is 0.3% of the amount borrowed.

79 Meadowbout Way, Bowbrook, Shrewsbury, SY5 8QB

Coopergreenpooks.co.uk

£475,000 Freehold—5 bedroom detached house

sales@cgpooks.co.uk



IMPORTANT NOTICE: Cooper Green Pooks for themselves and for the lessors or vendors of this property whose agents they are give notice that: 1 No appliances, services or service installations have been tested and no warranty as to suitability or serviceability is implied. Any prospective purchaser or lessee is advised to obtain verification from their surveyor or solicitor. 2. The particulars are set out as a general outline only for the guidance of the intended purchasers or lessees and do not constitute, nor constitute part of, an offer or contract. 3. All descriptions, reference to condition and necessary permissions for use and occupation and other details are given in good faith and are believed to be correct but any intending purchasers or lessees should not rely on them as statements or representation of fact but satisfy themselves by inspection or otherwise as to the correctness of each of them. 4. No person in the employment of Cooper Green Pooks has any authority to make or give any representation or warranty whatsoever in relation to this property. 5. All rentals and prices are quoted exclusive of Stamp Duty, legal and surveyors fees and any other associated purchasers or lessees costs. 6. Floor plans are indicative only and should not be relied on. 7. The plan showing the boundary of the property is indicative only and has not been checked against the legal title so should not be relied on. 8. All dimensions, floor areas and site areas are only approximate and should not be relied on. Dimensions are generally maximum room dimension.