



5, Churchill Road, Copthorne, Shrewsbury, SY3 8ZA
£315,000



5, Churchill Road, Copthorne, Shrewsbury, SY3 8ZA

£315,000

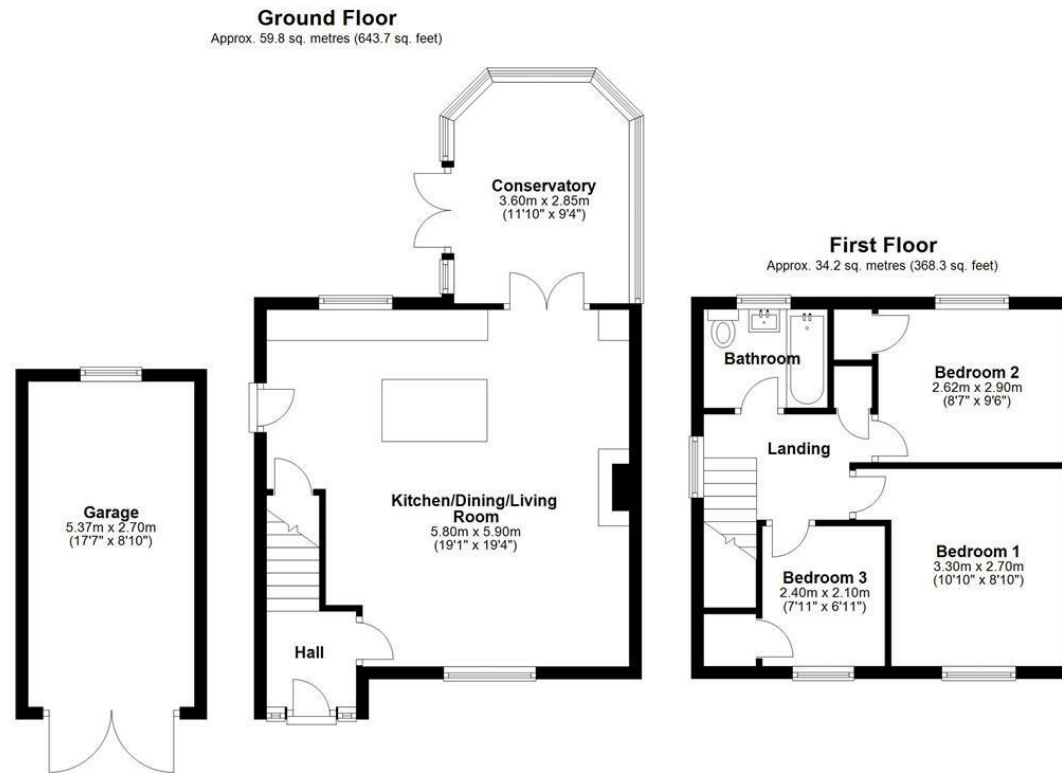
Occupying a fantastic position, just a short distance from the Royal Shrewsbury Hospital and town centre, this detached house has been significantly improved to a high standard throughout, while benefitting from a good sized private rear garden, driveway and garage.

Description



null
Council Tax Band: C
Available:
EPC: C

Floor Plans



Total area: approx. 94.0 sq. metres (1012.0 sq. feet)

We accept no responsibility for any mistake or inaccuracy contained within the floorplan. The floorplan is provided as a guide only and should be taken as an illustration only. The measurements, contents and positioning are approximations only and provided as a guidance tool and not an exact replication of the property.
Plan produced using PlanUp.

These particulars, whilst believed to be accurate are set out as a general outline only for guidance and do not constitute any part of an offer or contract. Intending purchasers should not rely on them as statements of representation of fact, but must satisfy themselves by inspection or otherwise as to their accuracy. No person in this firm's employment has the authority to make or give any representation or warranty in respect of the property.