



Apartment 7, Hazledine Court, Longden Coleham, Shrewsbury, SY3 7BS

1 bedroom ground floor apartment—£135,000 Leasehold

Apartment 7, Hazeldine Court, Longden Coleham, Shrewsbury, SY3 7BS

Coopergreenpooks.co.uk

£135,000 Leasehold—1 bedroom ground floor apartment

sales@cgpooks.co.uk

A spacious, light and well-presented purpose-built retirement apartment offers practical and thoughtfully designed accommodation, located in this popular McCarthy & Stone development set in landscaped gardens adjoining the River Severn, a short walk from an excellent range of amenities and town centre.

KEY FEATURES

- The property is situated on the ground floor and is accessed via neatly kept communal entrance with secure telephone entry system
- Entrance hall with built-in store
- Open plan living/dining room with windows to two elevations, Juliette balcony, and larger style living area with plenty of storage
- Glazed double doors from dining area to separate fitted kitchen
- Large double bedroom built in wardrobes
- Separate bathroom with shower
- Electric heating and uPVC double glazed windows
- The property is specifically designed for retirement and has full time house manager, spacious residential lounge and communal areas, guest flat for visitors, laundry and drying rooms
- Beautiful private communal grounds which provide seating areas and direct views across the adjoining River Severn towards the town centre. There is also private residents parking
- Sold with no upward chain

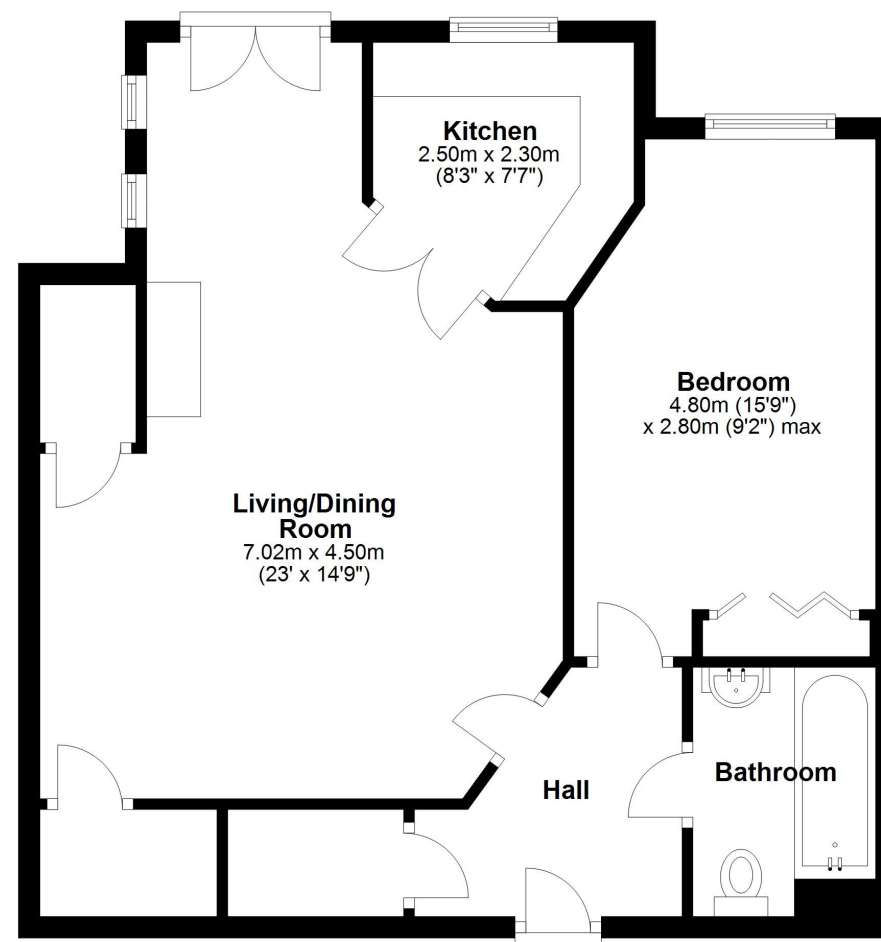
Cooper Green Pooks
3 Barker Street
Shrewsbury
SY1 1QF

www.cgpooks.co.uk
sales@cgpooks.co.uk



Ground Floor

Approx. 58.7 sq. metres (631.7 sq. feet)



Total area: approx. 58.7 sq. metres (631.7 sq. feet)

We accept no responsibility for any mistake or inaccuracy contained within the floorplan. The floorplan is provided as a guide only and should be taken as an illustration only. The measurements, contents and positioning are approximations only and provided as a guidance tool and not an exact replication of the property.
Plan produced using PlanUp.



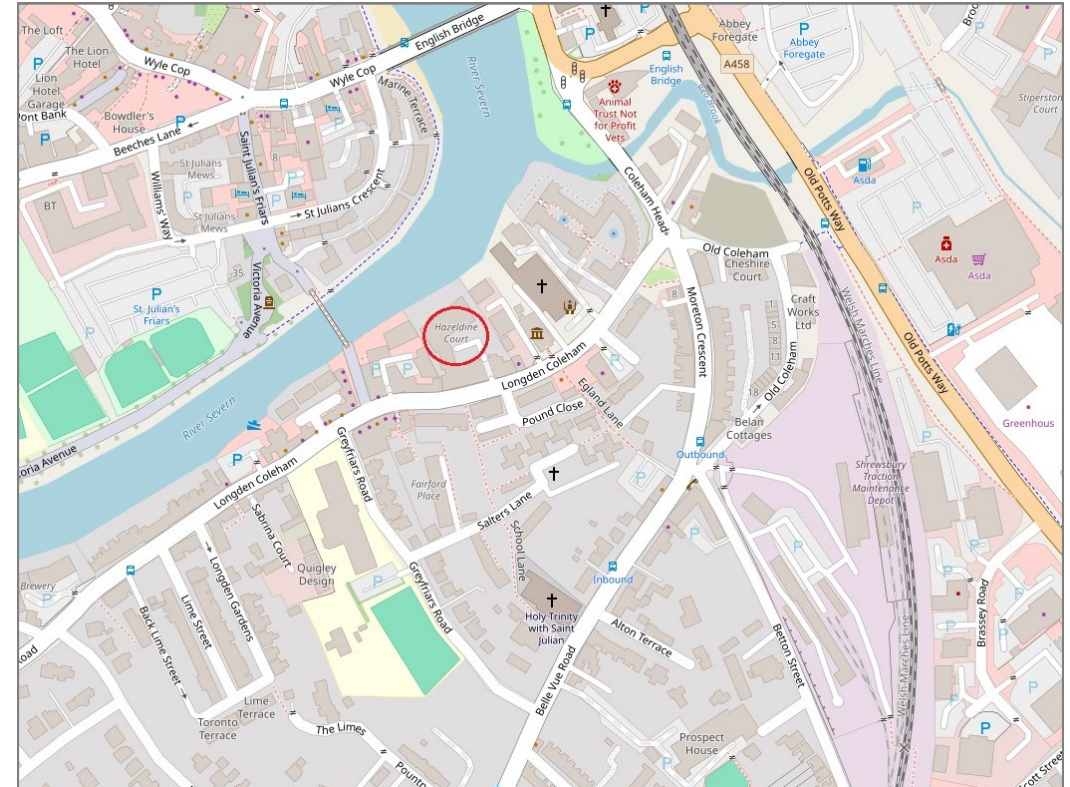






Apartment 7, Hazeldine Court, Shrewsbury, SY3 7BS

£135,000 Leasehold—1 bedroom ground floor apartment
sales@cgpooks.co.uk



BOUNDARIES NOT CONFIRMED

Tenure	Leasehold
Lease Length	125 years from 2004
Local Authority	Shropshire Council
Council Tax	Band C
EPC Band	TBC
Services	Mains services water, electricity and drainage are connected Heating is electric

Expert mortgage advice available
3 Barker St, Shrewsbury SY1 1QF
Cooper Green Pooks
01743 276666



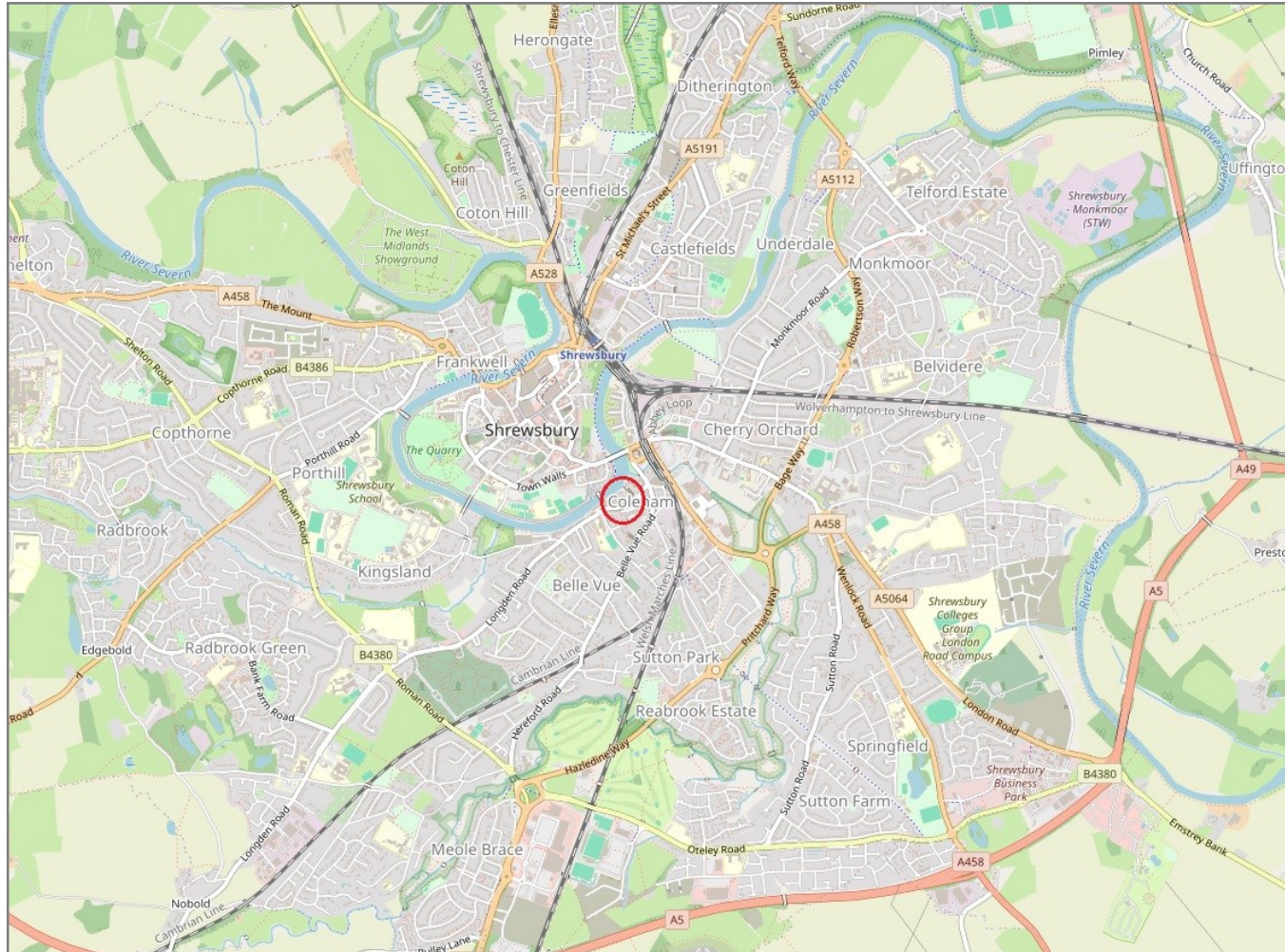
Your home may be repossessed if you do not keep up repayments on your mortgage.
There may be a fee for mortgage advice. The actual amount you pay will depend upon your circumstances. The fee is up to 1% but a typical fee is 0.3% of the amount borrowed.

Apartment 7, Hazeldine Court, Shrewsbury, SY3 7BS

Coopergreenpooks.co.uk

£135,000 Leasehold—1 bedroom ground floor apartment

sales@cgpooks.co.uk



IMPORTANT NOTICE: Cooper Green Pooks for themselves and for the lessors or vendors of this property whose agents they are give notice that: 1 No appliances, services or service installations have been tested and no warranty as to suitability or serviceability is implied. Any prospective purchaser or lessee is advised to obtain verification from their surveyor or solicitor. 2. The particulars are set out as a general outline only for the guidance of the intended purchasers or lessees and do not constitute, nor constitute part of, an offer or contract. 3. All descriptions, reference to condition and necessary permissions for use and occupation and other details are given in good faith and are believed to be correct but any intending purchasers or lessees should not rely on them as statements or representation of fact but satisfy themselves by inspection or otherwise as to the correctness of each of them. 4. No person in the employment of Cooper Green Pooks has any authority to make or give any representation or warranty whatsoever in relation to this property. 5. All rentals and prices are quoted exclusive of Stamp Duty, legal and surveyors fees and any other associated purchasers or lessees costs. 6. Floor plans are indicative only and should not be relied on. 7. The plan showing the boundary of the property is indicative only and has not been checked against the legal title so should not be relied on. 8. All dimensions, floor areas and site areas are only approximate and should not be relied on. Dimensions are generally maximum room dimension.