



The Squirrels, Astley, Shrewsbury, SY4 4BP
£1,950 Per Month



The Squirrels, Astley, Shrewsbury, SY4 4BP

£1,950 Per Month

VIRTUAL TOUR AVAILABLE - This fantastic four bedroom detaches family home has been individually built and provides well-presented and versatile accommodation in a lovely private setting, just a 10 minute drive from Shrewsbury with rural views.

Available from: 16/07/24

Description

Comprising: Entrance hall with store and cloakroom, connecting dining and living rooms with wood burner and glazed double doors to garden, large Kitchen/breakfast room with natural stone tiled flooring, integrated fridge/freezer and dishwasher, range cooker and glazed doors to conservatory, rear hall with secondary staircase to first floor landing and door to inner hall/utility with space for a washing machine, dryer and further fridge/freezer, cloakroom.

First floor landing off rear entrance hall comprising, study area *this is the room accessed off the landing at the top of the staircase to the rear of the property - please note that this room is utilised for storage of the landlord's possessions and is therefore not available to tenants*, three double bedrooms, master bedroom with dressing room and en-suite shower room, family bathroom. Double glazed windows and gas fired central heating. There is underfloor heating to parts of the property . Extensive gravelled driveway and parking area for several cars, which also provides access to a double garage with electric roller door and adjoining workshop/store. Private and attractively landscaped front side and rear gardens, with paved sun terrace. Very well situated in this quiet and popular hamlet, just a 5 minute drive from both Hadnall and Shawbury, as well as being just 5 miles from Shrewsbury. EPC C.



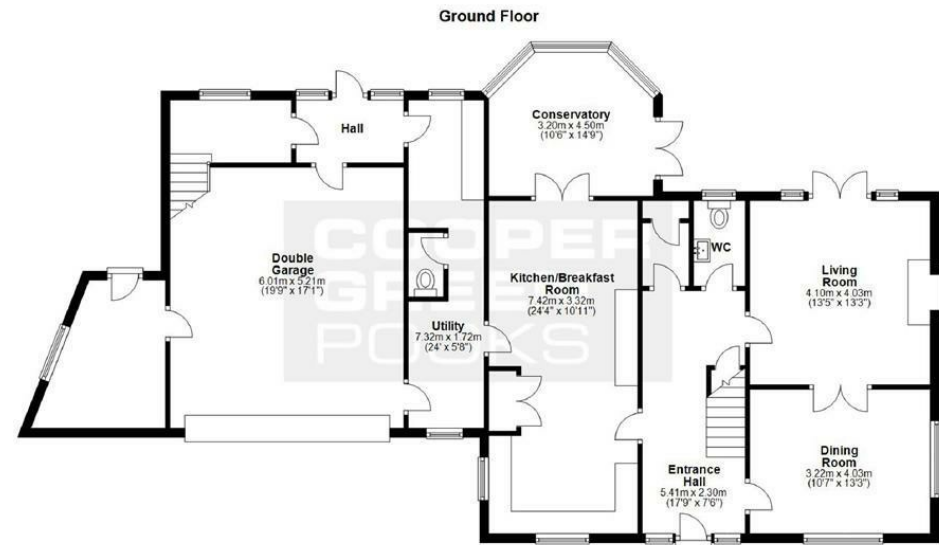
Unfurnished

Council Tax Band: E

Available: 16th July 2024

EPC: C

Floor Plans



We accept no responsibility for any mistake or inaccuracy contained within the floorplan. The floorplan is provided as a guide only and should be taken as an illustration only. The measurements, contents and positioning are approximations only and provided as a guidance tool and not an exact replication of the property.
Plan produced using PlanUp.

These particulars, whilst believed to be accurate are set out as a general outline only for guidance and do not constitute any part of an offer or contract. Intending purchasers should not rely on them as statements of representation of fact, but must satisfy themselves by inspection or otherwise as to their accuracy. No person in this firm's employment has the authority to make or give any representation or warranty in respect of the property.