



Plot 46, The Kirkdale, Rose Place, Welshpool Road, Shrewsbury, SY3 5BU  
£465,000



Plot 46, The Kirkdale, Rose Place, Welshpool Road, Shrewsbury, SY3 5BU

**£465,000**

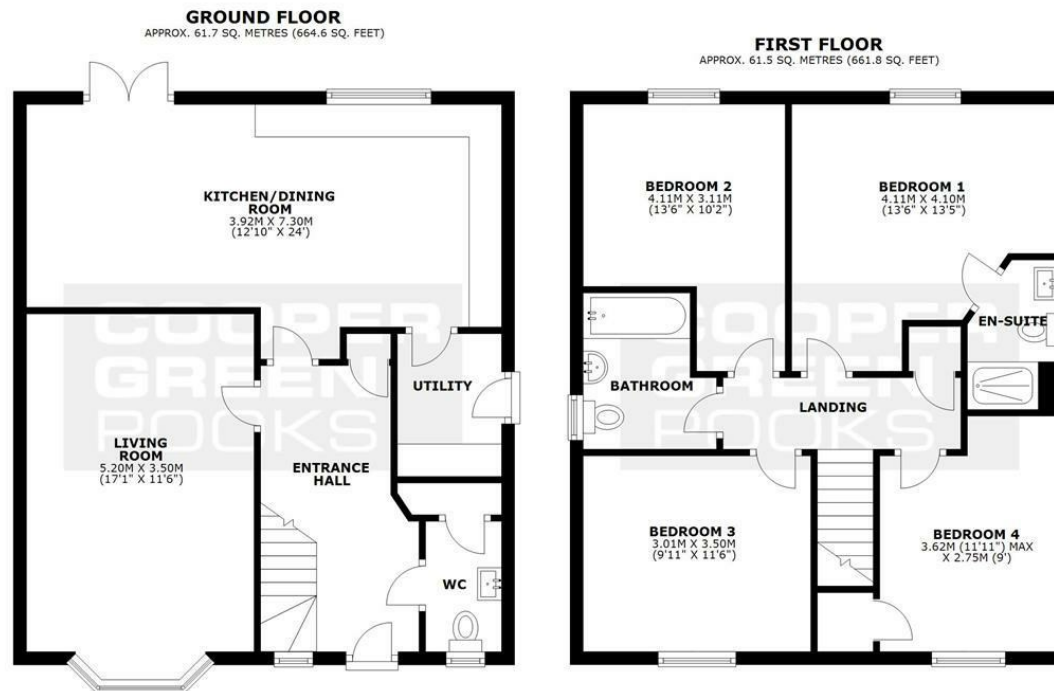
Sash-style windows give the Kirkdale a delightfully traditional look, while inside it is designed very much for the modern family life. The hub of the house will surely be the expansive open-plan kitchen, which has dining and family areas with French doors to the south west garden and a separate utility room. The lounge has an attractive front-aspect bay window, making it a pleasant place to relax. Upstairs, four double bedrooms - the main with en-suite- and a family bathroom provide comfort for all the family.

## Description



null  
Council Tax Band: New Build  
Available:  
EPC:

## Floor Plans



TOTAL AREA: APPROX. 123.2 SQ. METRES (1326.4 SQ. FEET)

We accept no responsibility for any mistake or inaccuracy contained within the floorplan. The floorplan is provided as a guide only and should be taken as an illustration only. The measurements, contents and positioning are approximations only and provided as a guidance tool and not an exact replication of the property.  
Plan produced using PlanUp.

These particulars, whilst believed to be accurate are set out as a general outline only for guidance and do not constitute any part of an offer or contract. Intending purchasers should not rely on them as statements of representation of fact, but must satisfy themselves by inspection or otherwise as to their accuracy. No person in this firm's employment has the authority to make or give any representation or warranty in respect of the property.