



Earls Hill Barn, Pontesford Hill, Pontesford, Shrewsbury, SY5 0UH
£835,000



Earls Hill Barn, Pontesford Hill, Pontesford, Shrewsbury, SY5 0UH

£835,000

This wonderful barn conversion was previously used by the Wildlife Trust before being sympathetically converted into a unique family home that's located in a stunning setting at the foot of Pontesford Hill, with about 4 acres of secluded ground and idyllic woodland.

Description



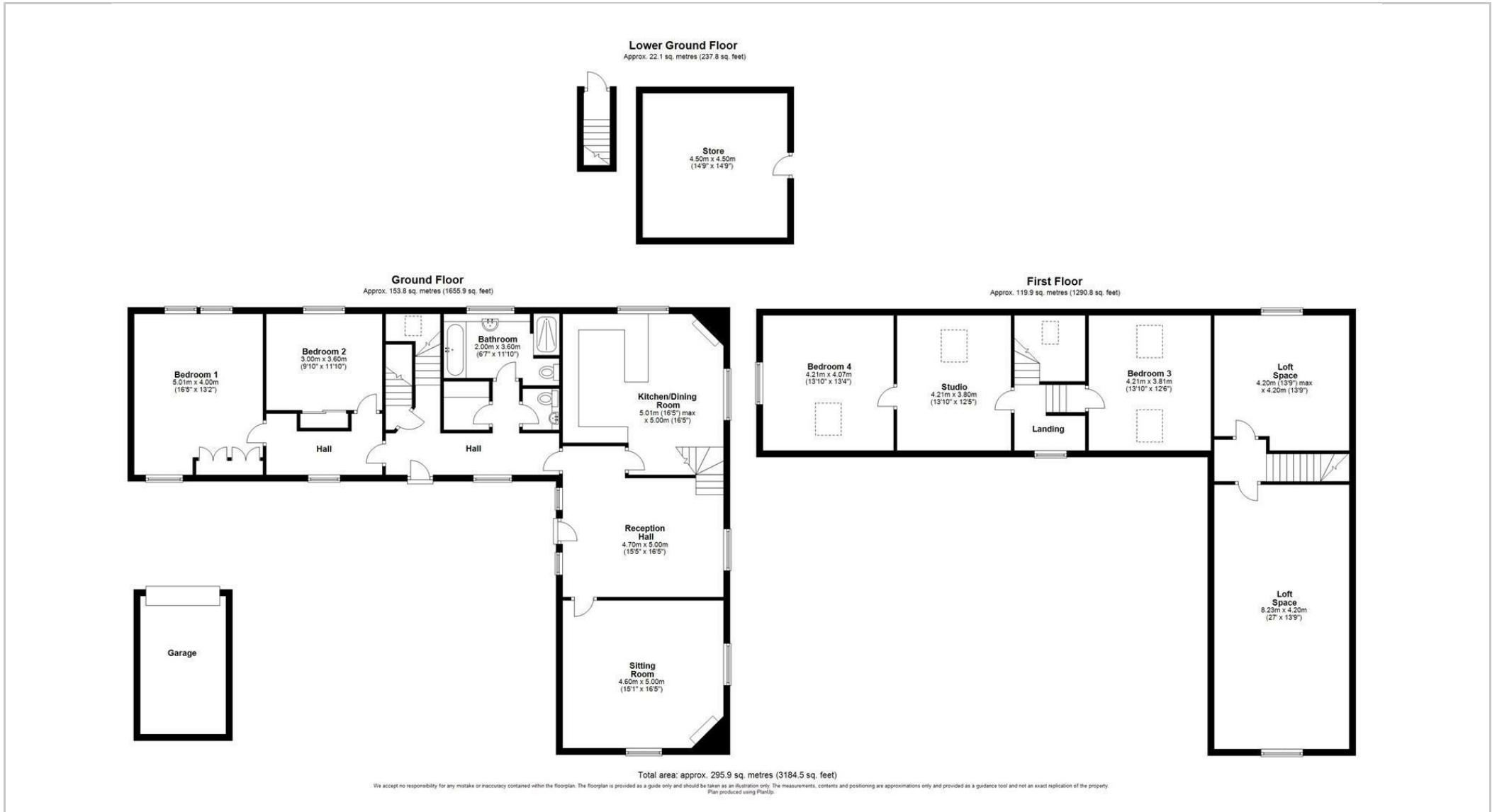
null

Council Tax Band: F

Available:

EPC:

Floor Plans



These particulars, whilst believed to be accurate are set out as a general outline only for guidance and do not constitute any part of an offer or contract. Intending purchasers should not rely on them as statements of representation of fact, but must satisfy themselves by inspection or otherwise as to their accuracy. No person in this firm's employment has the authority to make or give any representation or warranty in respect of the property.