



5, Hammonds Terrace, Coton Hill, Shrewsbury, SY1 2EA
£700 Per Month



5, Hammonds Terrace, Coton Hill, Shrewsbury, SY1 2EA

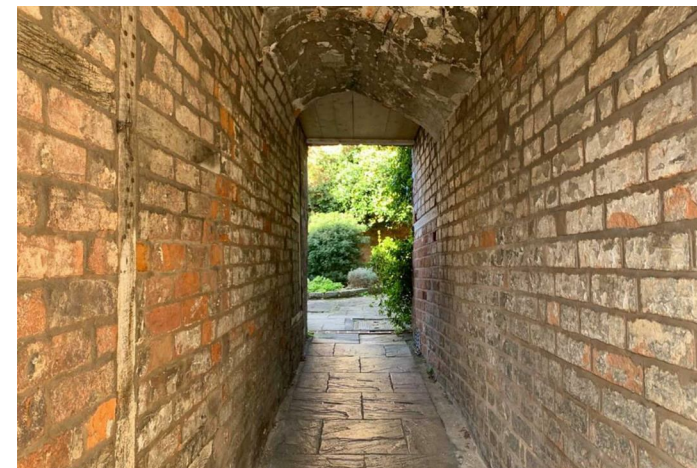
£700 Per Month

VIRTUAL TOUR AVAILABLE - Most attractive, recently refurbished one bedroom mid terraced house in a most attractive Victorian terrace of eight houses accessed through a private archway leading to a south facing courtyard full of charm and character.

Available: 05/07/24

Description

Comprising: Entrance leading to living room with quarry tiled floor and sash window overlooking south facing courtyard, modern kitchen including oven & hob, door to rear courtyard. Stairs to first floor landing, good sized double bedroom including built in wardrobe, bathroom including shower. Gas central heating. South facing courtyard garden. EPC D



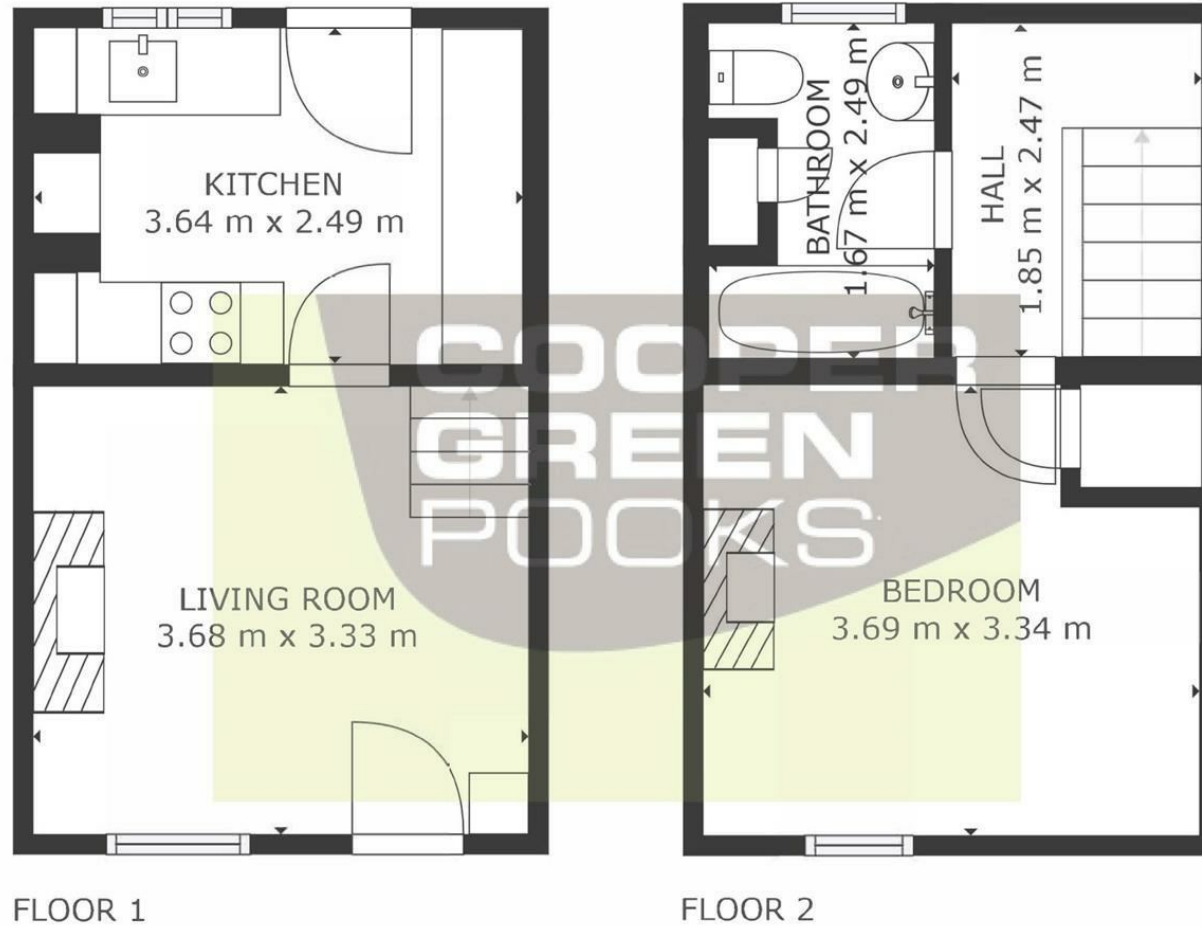
Unfurnished

Council Tax Band: A

Available: 5th July 2024

EPC: D

Floor Plans



GROSS INTERNAL AREA
FLOOR 1: 22 m², FLOOR 2: 22 m²
TOTAL: 44 m²
SIZES AND DIMENSIONS ARE APPROXIMATE, ACTUAL MAY VARY.



These particulars, whilst believed to be accurate are set out as a general outline only for guidance and do not constitute any part of an offer or contract. Intending purchasers should not rely on them as statements of representation of fact, but must satisfy themselves by inspection or otherwise as to their accuracy. No person in this firm's employment has the authority to make or give any representation or warranty in respect of the property.