



**25, Marshalls Court, Shrewsbury, SY1 2HX**  
£800 Per Month



25, Marshalls Court, Shrewsbury, SY1 2HX

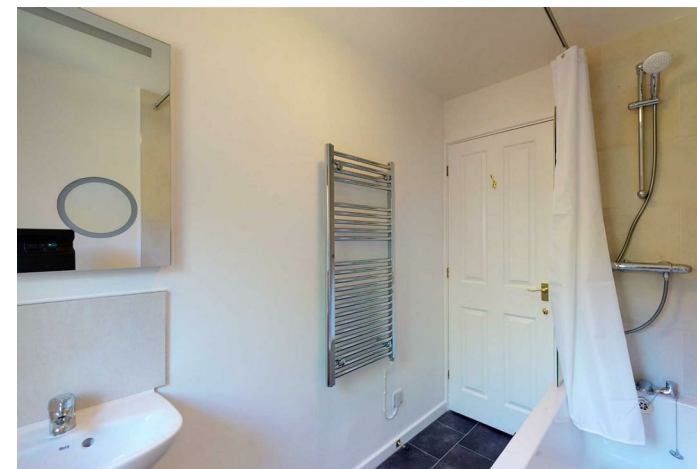
**£800 Per Month**

VIRTUAL TOUR AVAILABLE - Neatly presented two bedroom terraced house tucked away behind The Flaxmill, a short walk to Shrewsbury town centre. Front and rear gardens, allocated parking.

Available: 08/08/2024

## Description

Comprising: Entrance hall to living room with generous under-stairs storage, kitchen dining room with under counter space for washing machine and fridge freezer, includes freestanding double oven and hob, door to rear garden. Stairs to first floor landing, large double bedroom with integrated storage, second double bedroom, bathroom with shower over bath. Front and rear gardens. Double Glazing. Electric Heating. Allocated parking. EPC C



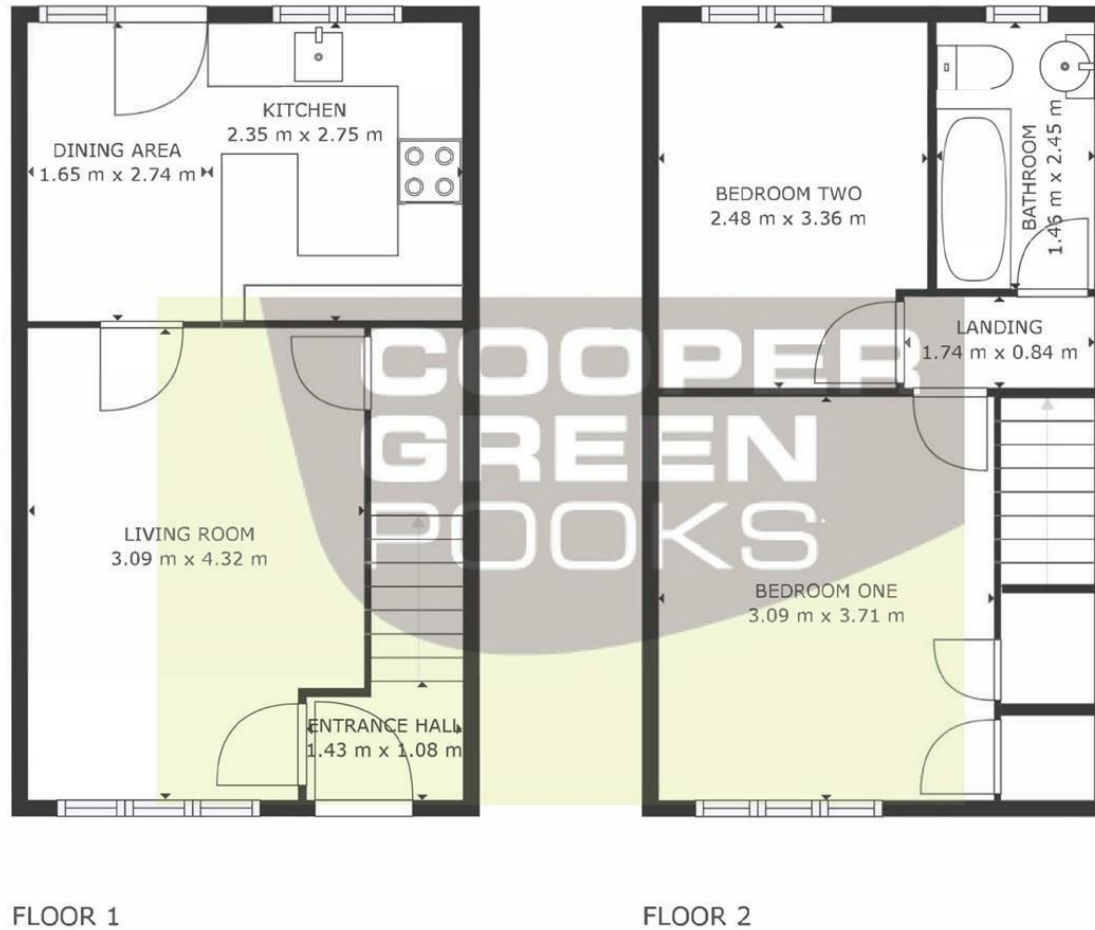
Unfurnished

Council Tax Band: B

Available: 8th August 2024

EPC: C

## Floor Plans



GROSS INTERNAL AREA  
FLOOR 1: 29 m<sup>2</sup>, FLOOR 2: 29 m<sup>2</sup>  
TOTAL: 57 m<sup>2</sup>  
SIZES AND DIMENSIONS ARE APPROXIMATE, ACTUAL MAY VARY.



These particulars, whilst believed to be accurate are set out as a general outline only for guidance and do not constitute any part of an offer or contract. Intending purchasers should not rely on them as statements of representation of fact, but must satisfy themselves by inspection or otherwise as to their accuracy. No person in this firm's employment has the authority to make or give any representation or warranty in respect of the property.