



Flat 2, Plume Flats, 8, Dogpole, Shrewsbury, SY1 1EN
£625 Per Month



Flat 2, Plume Flats, 8, Dogpole, Shrewsbury, SY1 1EN

£625 Per Month

VIRTUAL TOUR AVAILABLE - Spacious upper ground floor one bedroom flat benefitting from a spacious courtyard garden in the heart of Shrewsbury.

Available: 28/06/2024

Description

Comprising: Entrance hall, living room, kitchen including oven & hob and space for other white goods, double bedroom, bathroom incl shower. Double glazing. Private courtyard garden including brick built outside store. EPC E



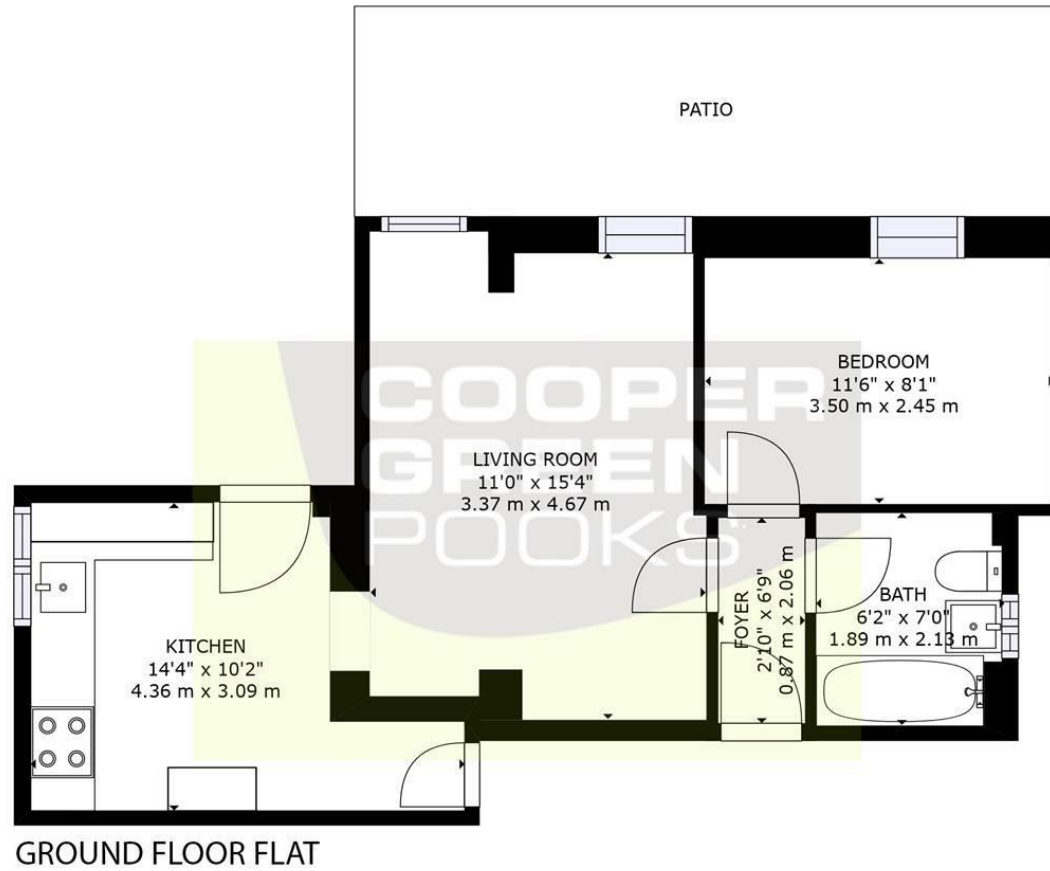
Unfurnished

Council Tax Band: A

Available: 28th June 2024

EPC: E

Floor Plans



TOTAL: 459 sq. ft, 43 m2
FLOOR 1: 459 sq. ft, 43 m2
EXCLUDED AREAS: PATIO: 163 sq. ft, 15 m2

SIZES AND DIMENSIONS ARE APPROXIMATE, ACTUAL MAY VARY.

These particulars, whilst believed to be accurate are set out as a general outline only for guidance and do not constitute any part of an offer or contract. Intending purchasers should not rely on them as statements of representation of fact, but must satisfy themselves by inspection or otherwise as to their accuracy. No person in this firm's employment has the authority to make or give any representation or warranty in respect of the property.