



7, Claremont Place, Claremont Hill, Shrewsbury, SY1 1RG

£695 Per Month



7, Claremont Place, Claremont Hill, Shrewsbury, SY1 1RG

£695 Per Month

VIRTUAL TOUR AVAILABLE - Very spacious one bedroom second floor flat with good sized balcony in a quiet residential location in the heart of Shrewsbury town centre, a stone's throw from the beautiful Quarry Park. The flat is of generous proportions and is in good condition throughout. The property benefits from a professionally maintained communal garden, providing the four flats in the block with a peaceful and attractive outside space in the centre of town.

Available: 21/06/24

Description

Comprising: Communal entrance to four flats, stairs to second floor, private hallway including store cupboard, large living room including access to good sized balcony, large bedroom, good sized kitchen including oven & hob, bathroom including shower. Professionally maintained communal garden to the rear. Double glazing. EPC E

*A large single garage is available on the ground floor for a further £150 per month



Unfurnished

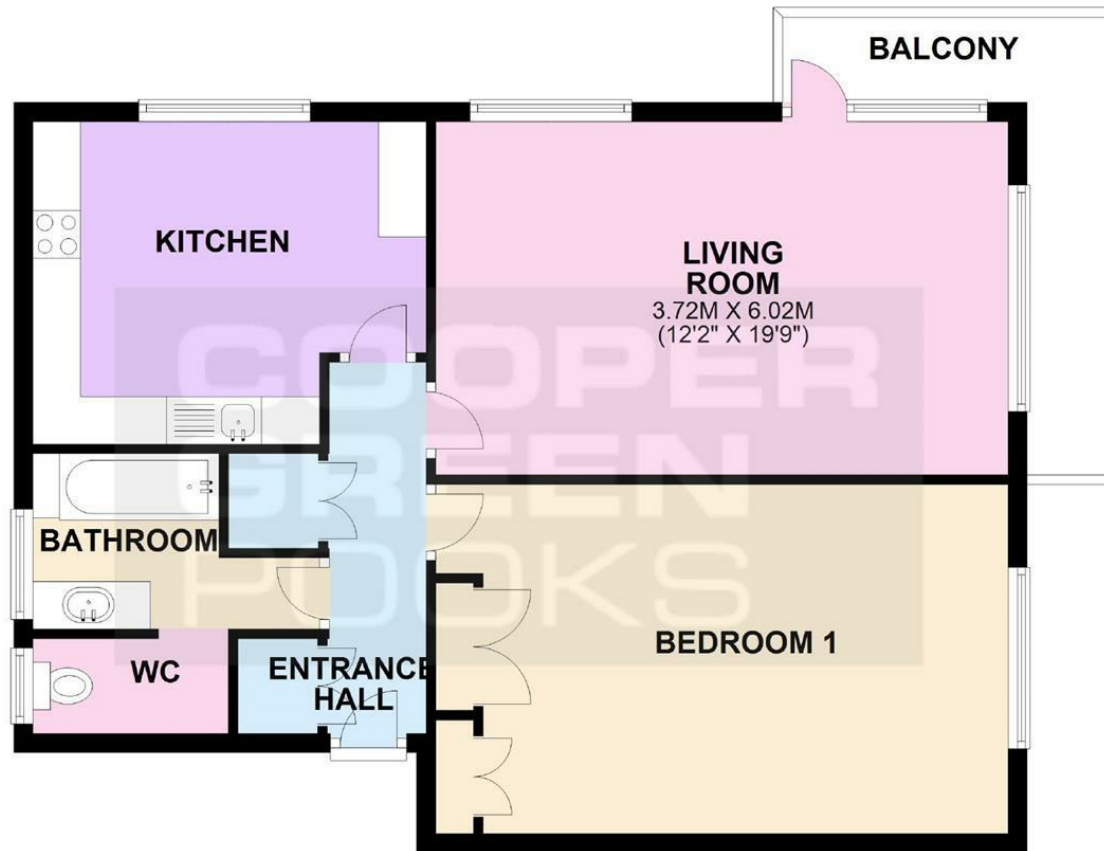
Council Tax Band: B

Available: 21st June 2024

EPC: E

Floor Plans

SECOND FLOOR APPROX. 72.4 SQ. METRES (779.3 SQ. FEET)



TOTAL AREA: APPROX. 72.4 SQ. METRES (779.3 SQ. FEET)

We accept no responsibility for any mistake or inaccuracy contained within the floorplan. The floorplan is provided as a guide only and should be taken as an illustration only. The measurements, contents and positioning are approximations only and provided as a guidance tool and not an exact replication of the property.
Plan produced using PlanUp.

These particulars, whilst believed to be accurate are set out as a general outline only for guidance and do not constitute any part of an offer or contract. Intending purchasers should not rely on them as statements of representation of fact, but must satisfy themselves by inspection or otherwise as to their accuracy. No person in this firm's employment has the authority to make or give any representation or warranty in respect of the property.