



**Home Views, Annscroft, Shrewsbury, SY5 8AZ**  
£1,200 Per Month



Home Views, Annscroft, Shrewsbury, SY5 8AZ

**£1,200 Per Month**

Spacious three bedroom detached house on a generous plot situated a short distance to the south west of Shrewsbury benefitting from far reaching views and a quiet setting.

Available: 21/06/24

## Description

Comprising: Entrance hall, understairs storage cupboard, cloakroom with utility area, large living room with open fire, dining room, kitchen. Stairs to first floor landing, large master bedroom, two further double bedrooms, modern bathroom including shower, separate WC. Double glazing, oil fired central heating. Detached garage, driveway, good sized gardens with open views. EPC E



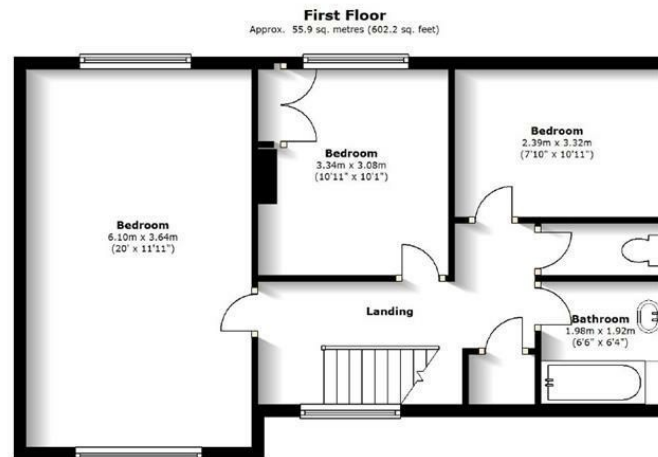
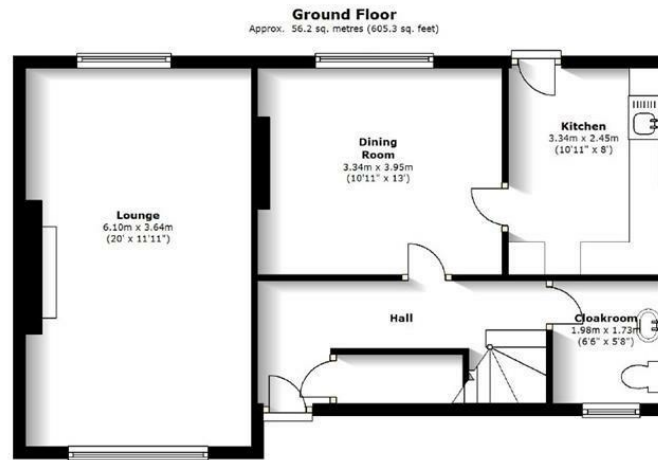
Unfurnished

Council Tax Band: D

Available: 21st June 2024

EPC: E

## Floor Plans



Total area: approx. 112.2 sq. metres (1207.5 sq. feet)

We accept no responsibility for any mistake or inaccuracy contained within the floorplan. The floorplan is provided as a guide only and should be taken as an illustration only. The measurements, contents and positioning are approximations only and provided as a guidance tool and not an exact replication of the property.  
Plan produced using The Mobile Agent.

These particulars, whilst believed to be accurate are set out as a general outline only for guidance and do not constitute any part of an offer or contract. Intending purchasers should not rely on them as statements of representation of fact, but must satisfy themselves by inspection or otherwise as to their accuracy. No person in this firm's employment has the authority to make or give any representation or warranty in respect of the property.