



21, Painters Place, Redwood Park, Bicton Heath, Shrewsbury, SY3 5PT  
£825 Per Month



21, Painters Place, Redwood Park, Bicton Heath, Shrewsbury, SY3 5PT

**£825 Per Month**

VIRTUAL TOUR AVAILABLE - A nicely presented two bedroom terraced house, positioned in a quiet cul-de-sac in close proximity to the the Royal Shrewsbury Hospital and other useful amenities. The property is particularly spacious on the first floor and benefits from a newly landscaped rear garden. Allocated parking for two cars.

## Description

Comprising: Entrance hall, kitchen with integrated oven and hob plus space for appliances, living / dining room, two double bedrooms and bathroom with shower over bath. Gas central heating. Double glazing. Newly landscaped rear garden. Allocated parking. EPC TBC.



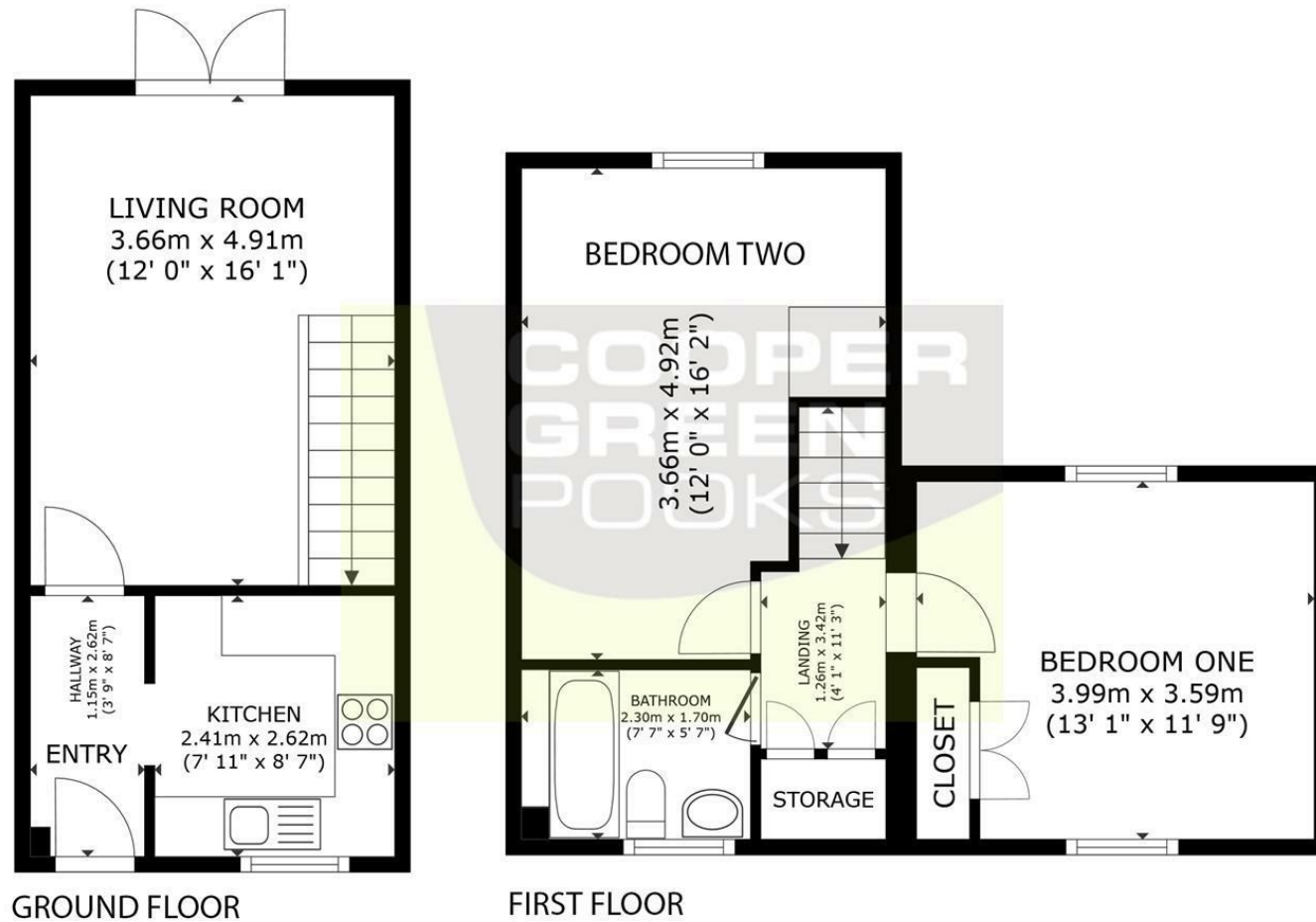
Unfurnished

Council Tax Band: B

Available: 8th May 2024

EPC:

## Floor Plans



GROSS INTERNAL AREA  
FLOOR 1 27.9 m<sup>2</sup> (300 sq.ft.) FLOOR 2 40.0 m<sup>2</sup> (430 sq.ft.)  
TOTAL : 67.9 m<sup>2</sup> (731 sq.ft.)

SIZES AND DIMENSIONS ARE APPROXIMATE, ACTUAL MAY VARY.

These particulars, whilst believed to be accurate are set out as a general outline only for guidance and do not constitute any part of an offer or contract. Intending purchasers should not rely on them as statements of representation of fact, but must satisfy themselves by inspection or otherwise as to their accuracy. No person in this firm's employment has the authority to make or give any representation or warranty in respect of the property.